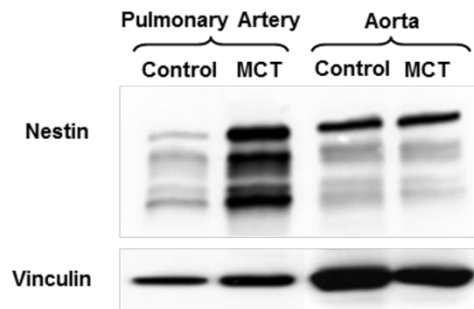


Supplemental Figure 3



Supplemental Figure 3. Nestin expression in pulmonary artery and aorta of rats after MCT treatment compared to controls. Western blot showing increased nestin expression in the pulmonary artery after MCT treatment (MCT) compared to untreated animals (control). In contrast, constant levels of nestin expression in the aorta of the MCT-treated (MCT) and untreated (control) animals were found (60 μ g cytosolic protein). Vinculin was used as loading control.