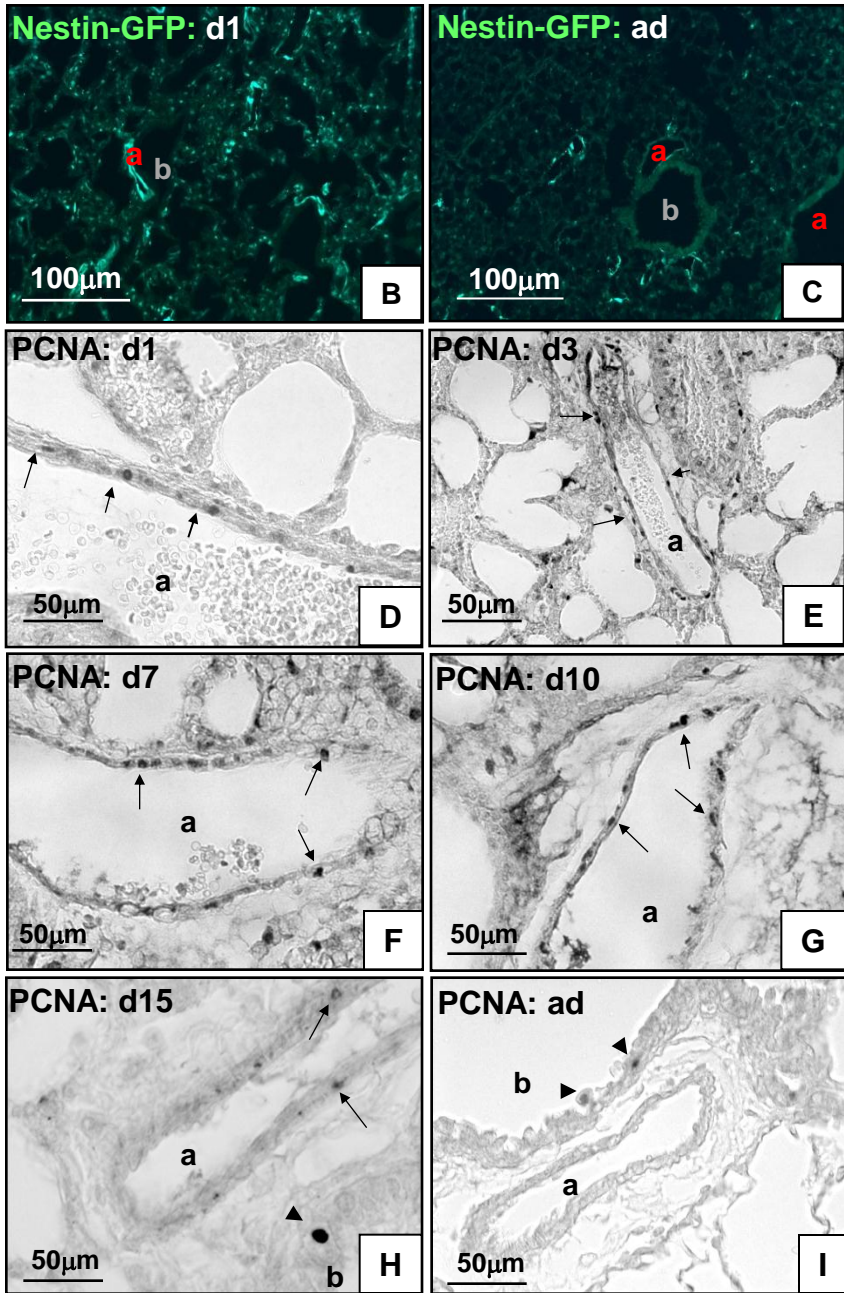
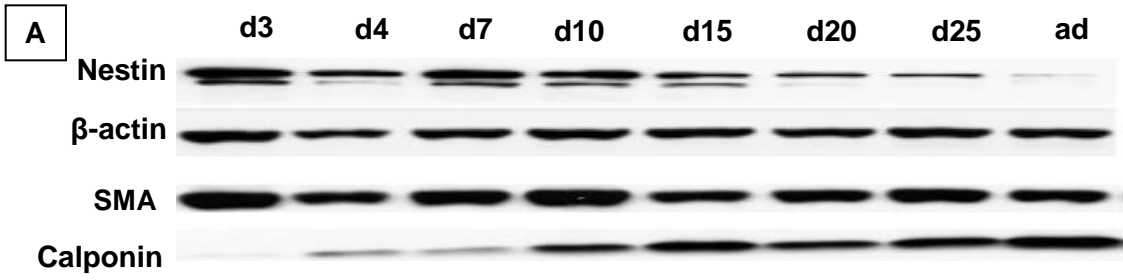


Supplemental Figure 2



Supplemental Figure 2. Analysis of nestin expression and VSMC proliferation in postnatal development of mouse lung. **A:** Western blot (60 μ g cytosolic protein) showing increased nestin and decreased calponin expression between d3 and d10 whereas SMA is mostly unchanged. β -actin was used as loading control. **B-C:** Nestin-GFP expression comparison of postnatal d1 and adult mice showed a higher Nestin-GFP expression in d1. **D-I:** PCNA immunostaining. PCNA⁺ (proliferating) VSMCs (arrows) are clearly visible in lung samples from postnatal d1 (D), d3 (E), d7 (F), d10 (G) and d15 (H). Lung section from adult mouse showing no PCNA⁺ VSMCs (I). Proliferating epithelial cells (arrowheads) served as internal positive control. Arteries are marked by (a) and bronchioli by (b).