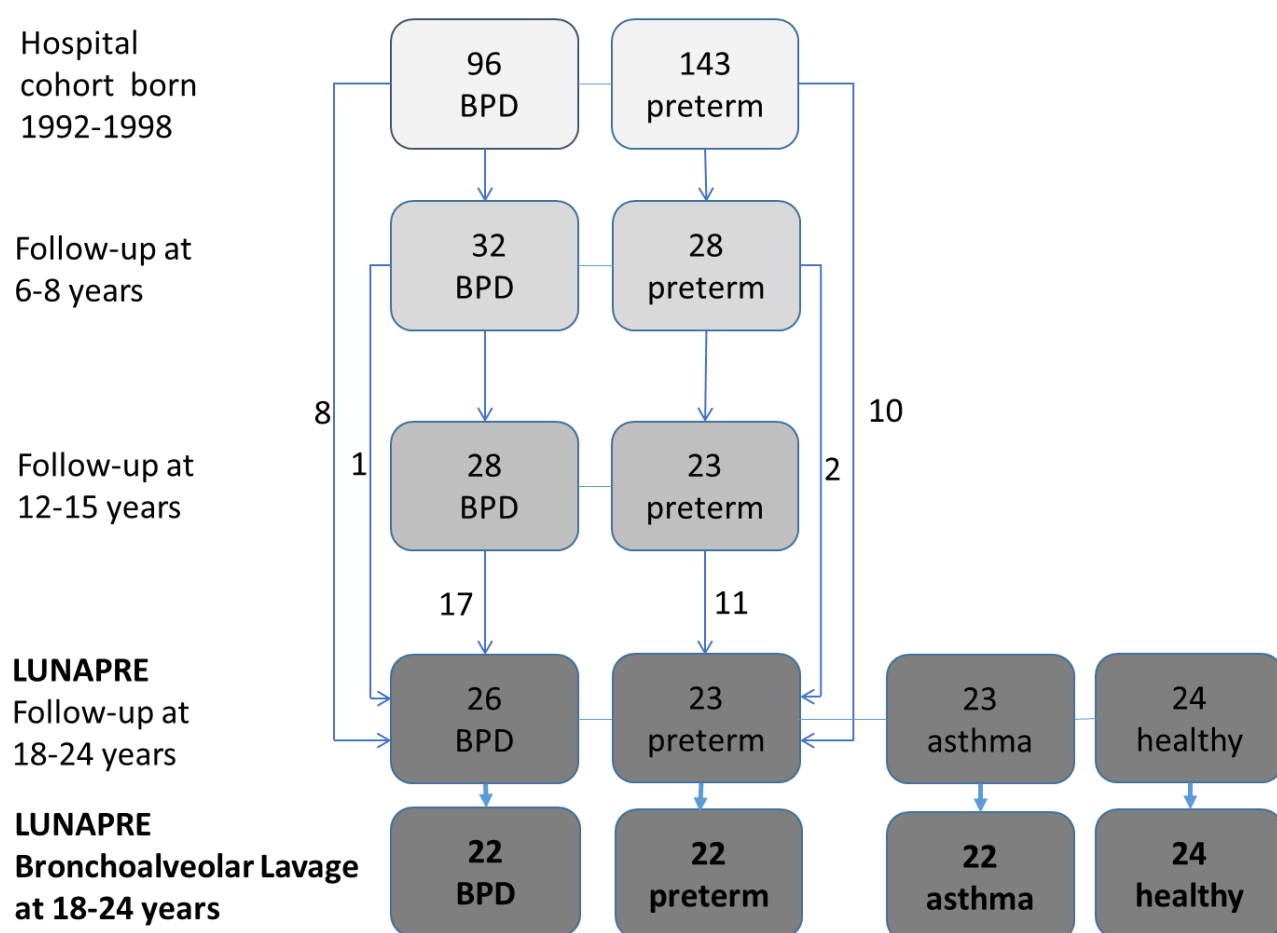


# Increased cytotoxic T-cells in the airways of adults with former bronchopulmonary dysplasia

Online supplement

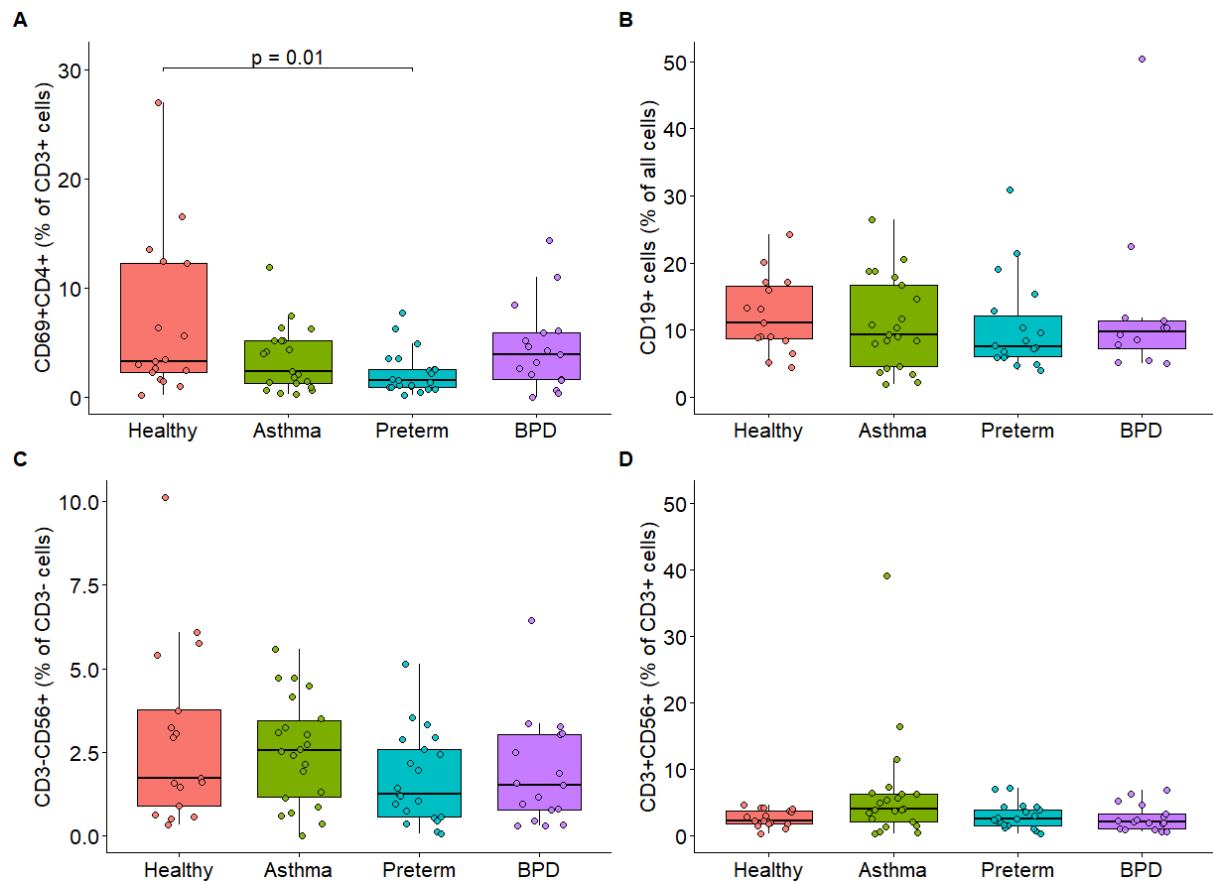
## APPENDIX 3. Figures

Figure E1.



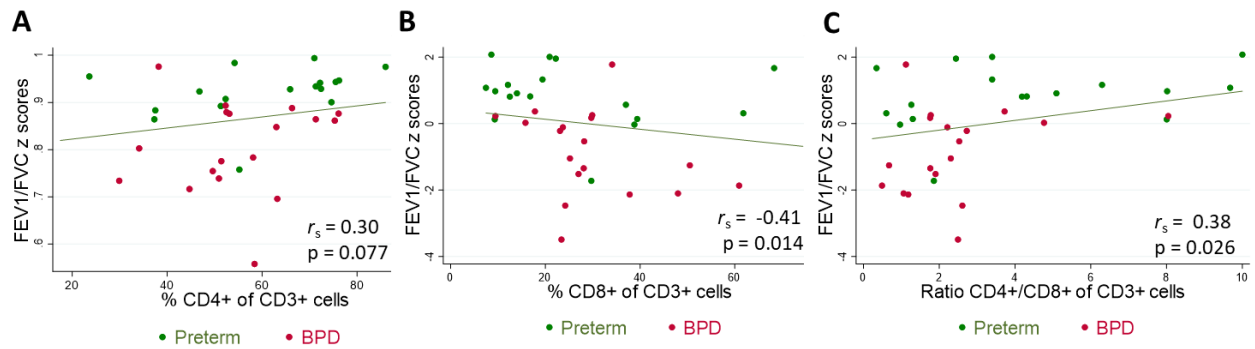
**Figure E1.** Schematic description of recruitment to the LUNAPRE-study. Reason for not completing LUNAPRE in all four groups was unwillingness to go through bronchoalveolar lavage.

**Figure E2**



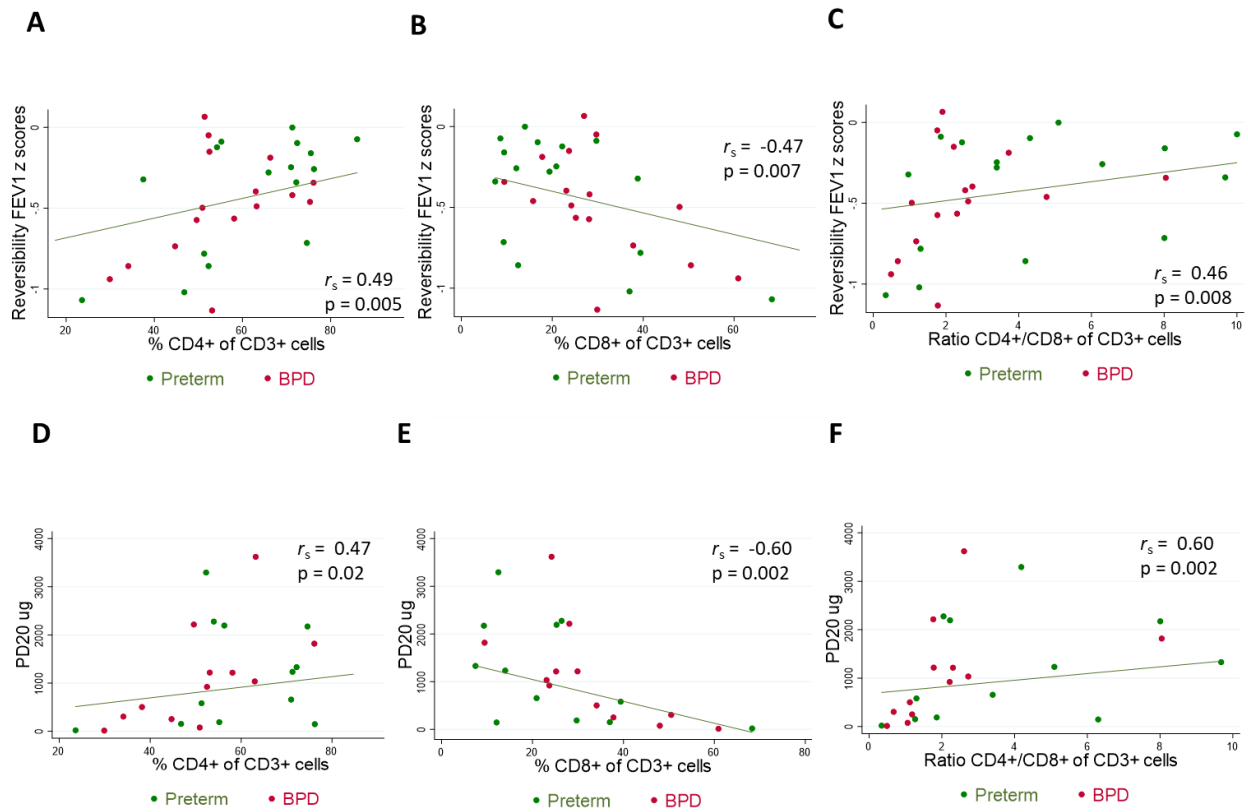
**Figure E2 A-D.** The dot plots show the percentage, and the boxes demonstrate IQR with the horizontal line for median, in BAL cells for **(A)**: CD3<sup>+</sup>CD4<sup>+</sup>CD69<sup>+</sup> (Activated T helper cells) (%) **(B)**: B cells, identified as CD19<sup>+</sup> cells **(D)**: CD56<sup>+</sup> cells of CD3<sup>-</sup> cells (NK cells) (%) and, **(H)**: CD56<sup>+</sup> cells of CD3<sup>+</sup> cells (%) (NKT,  $\gamma\delta$ T cells). All cells were gated for live cells. Analysis with Mann-Whitney U-test. Abbreviations: BPD: bronchopulmonary dysplasia

**Figure E3**



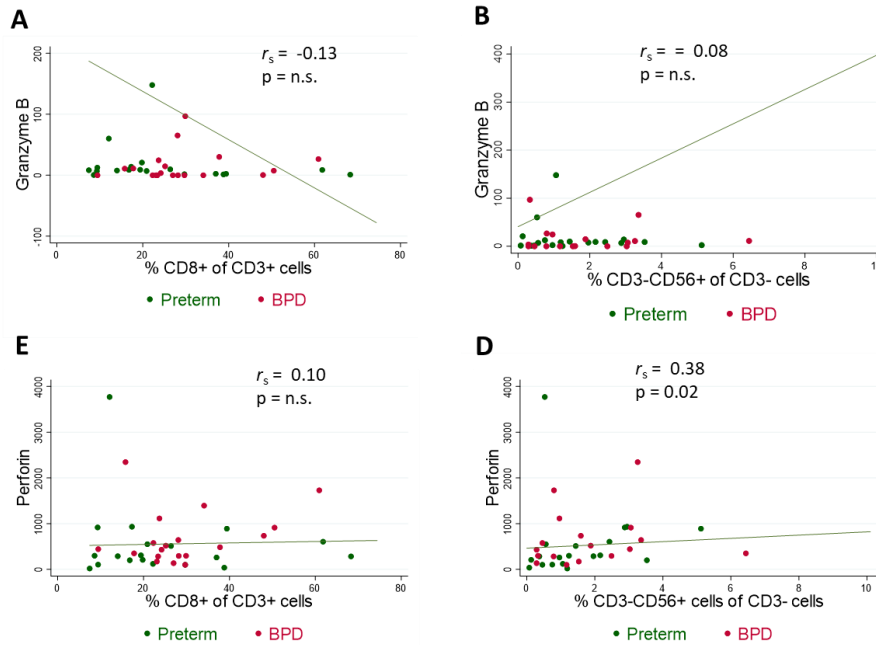
**Figure E3 A-C.** Correlation in pooled preterm group (preterm + BPD) between (A): CD3<sup>+</sup>CD4<sup>+</sup> T-cells in BAL and FEV<sub>1</sub>/FVC z-scores; (B): CD3<sup>+</sup>CD8<sup>+</sup> T-cells in BAL and FEV<sub>1</sub>/FVC z-scores (C): CD4/CD8 of CD3<sup>+</sup> cells in BAL and FEV<sub>1</sub>/FVC z-scores Abbreviations: BPD: bronchopulmonary dysplasia; BAL: bronchoalveolar lavage; FEV<sub>1</sub>: forced expiratory volume in 1 s; FVC: forced vital capacity;  $r_s$ : Spearman rank correlation coefficient

**Figure E4**



**Figure E4 A-F.** Correlation in pooled preterm group (preterm + BPD) between **(A):** CD3<sup>+</sup>CD4<sup>+</sup> T-cells (%) in BAL and reversibility FEV<sub>1</sub> z-scores; **(B):** CD3<sup>+</sup>CD8<sup>+</sup> T-cells (%) in BAL and reversibility FEV<sub>1</sub> z-scores; **(C):** CD4/CD8 ratio of CD3<sup>+</sup> T-cells in BAL and reversibility FEV<sub>1</sub> z-scores; **(D):** CD3<sup>+</sup>CD4<sup>+</sup> T-cells in BAL and PD20 ug **(E):** CD3<sup>+</sup>CD8<sup>+</sup> T-cells in BAL and PD20 ug; **(F):** CD4/CD8 ratio of CD3<sup>+</sup> T-cells in BAL and PD20 ug Abbreviations: BPD: bronchopulmonary dysplasia; BAL: bronchoalveolar lavage;  $r_s$  : Spearman rank correlation coefficient; PD20: Provocative dose of methacholine causing a 20% fall in FEV<sub>1</sub>.

**Figure E5**



**Figure E5 A-D.** Correlation in pooled preterm group (preterm + BPD) between (A): CD8<sup>+</sup>CD3<sup>+</sup> T-cells (%) in BAL and Granzyme B (pg/mL); (B) CD56<sup>+</sup> cells of CD3<sup>+</sup> cells (NK cells) (%) in BAL and Granzyme B (pg/mL); (C): CD8<sup>+</sup>CD3<sup>+</sup> T-cells (%) in BAL and perforin (pg/mL); (D): CD56<sup>+</sup> cells of CD3<sup>+</sup> cells (NK cells) (%) in BAL and perforin (pg/mL). Abbreviations: BPD: bronchopulmonary dysplasia; BAL: bronchoalveolar lavage;  $r_s$ : Spearman rank correlation coefficient

## APPENDIX FIGURE LEGENDS

**Figure E1.** Schematic description of recruitment to the LUNAPRE-study. Reason for not completing LUNAPRE in all four groups was unwillingness to go through bronchoalveolar lavage

**Figure E2 A-D.** The dot plots show the percentage, and the boxes demonstrate IQR with the horizontal line for median, in BAL cells for **(A)**: CD3<sup>+</sup>CD4<sup>+</sup>CD69<sup>+</sup> (Activated T helper cells) (%) **(B)**: B cells, identified as CD19<sup>+</sup> cells **(D)**: CD56<sup>+</sup> cells of CD3<sup>-</sup> cells (NK cells) (%) and, **(H)**: CD56<sup>+</sup> cells of CD3<sup>+</sup> cells (%) (NKT,  $\gamma\delta$ T cells). All cells were gated for live cells. Analysis with Mann-Whitney U-test. Abbreviations: BPD: bronchopulmonary dysplasia.

**Figure E3 A-C.** Correlation in pooled preterm group (preterm + BPD) between **(A)**: CD3<sup>+</sup>CD4<sup>+</sup> T-cells in BAL and post-bronchodilator FEV<sub>1</sub>/FVC z-scores; **(B)**: CD3<sup>+</sup>CD8<sup>+</sup> T-cells in BAL and post-bronchodilator FEV<sub>1</sub>/FVC z-scores **(C)**: CD4/CD8 of CD3<sup>+</sup> cells in BAL and post-bronchodilator FEV<sub>1</sub>/FVC z-scores Abbreviations: BPD: bronchopulmonary dysplasia; BAL: bronchoalveolar lavage; FEV<sub>1</sub>: forced expiratory volume in 1 s; FVC: forced vital capacity;  $r_s$ : Spearman rank correlation coefficient

**Figure E4 A-F.** Correlation in pooled preterm group (preterm + BPD) between **(A)**: CD3<sup>+</sup>CD4<sup>+</sup> T-cells (%) in BAL and reversibility FEV<sub>1</sub> z scores; **(B)**: CD3<sup>+</sup>CD8<sup>+</sup> T-cells (%) in BAL and reversibility FEV<sub>1</sub> z scores; **(C)**: CD4/CD8 ratio of CD3<sup>+</sup> T-cells in BAL and reversibility FEV<sub>1</sub> z scores; **(D)**: CD3<sup>+</sup>CD4<sup>+</sup> T-cells in BAL and PD20 ug **(E)**: CD3<sup>+</sup>CD8<sup>+</sup> T-cells in BAL and PD20 ug; **(F)**: CD4/CD8 ratio of CD3<sup>+</sup> T-cells in BAL and PD20 ug Abbreviations: BPD:

bronchopulmonary dysplasia; BAL: bronchoalveolar lavage;  $r_s$  : Spearman rank correlation coefficient; PD20: Provocative dose of metacholine causing a 20% fall in FEV<sub>1</sub>.

**Figure E5 A-D.** Correlation in pooled preterm group (preterm + BPD) between **(A)**: CD8<sup>+</sup>CD3<sup>+</sup> T-cells (%) in BAL and Granzyme B (pg/mL); **(B)** CD56<sup>+</sup> cells of CD3<sup>-</sup> cells (NK cells) (%) in BAL and Granzyme B (pg/mL); **(C)**: CD8<sup>+</sup>CD3<sup>+</sup> T-cells (%) in BAL and perforin (pg/mL); **(D)**: CD56<sup>+</sup> cells of CD3<sup>-</sup> cells (NK cells) (%) in BAL and perforin (pg/mL). Abbreviations: BPD: bronchopulmonary dysplasia; BAL: bronchoalveolar lavage;  $r_s$  : Spearman rank correlation coefficient