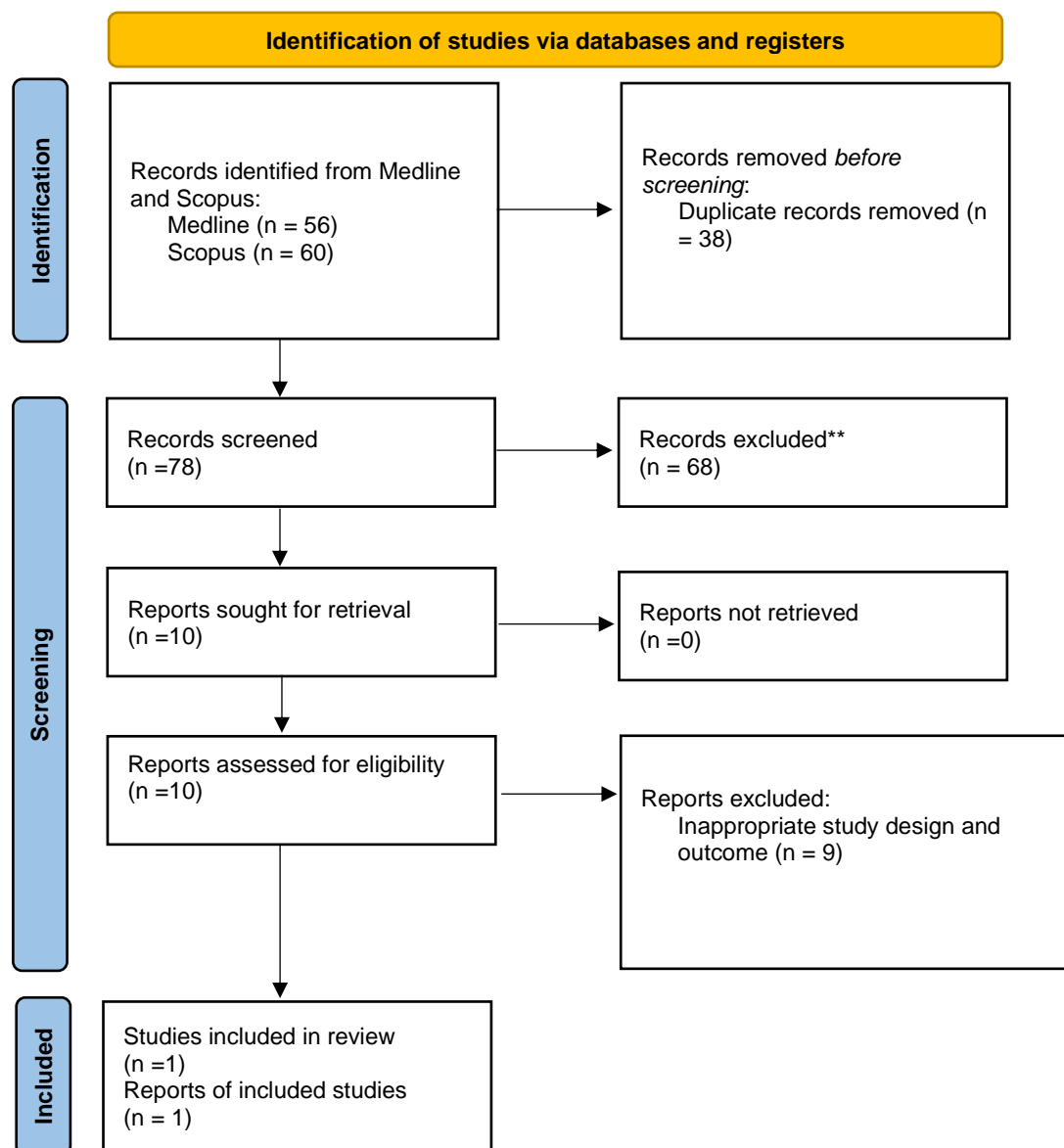


**Table S11a: Can combining FeNO, blood eosinophils and IgE help diagnose asthma in adults with episodic/chronic suggestive symptoms?**



\*Consider, if feasible to do so, reporting the number of records identified from each database or register searched (rather than the total number across all databases/registers).

\*\*If automation tools were used, indicate how many records were excluded by a human and how many were excluded by automation tools.