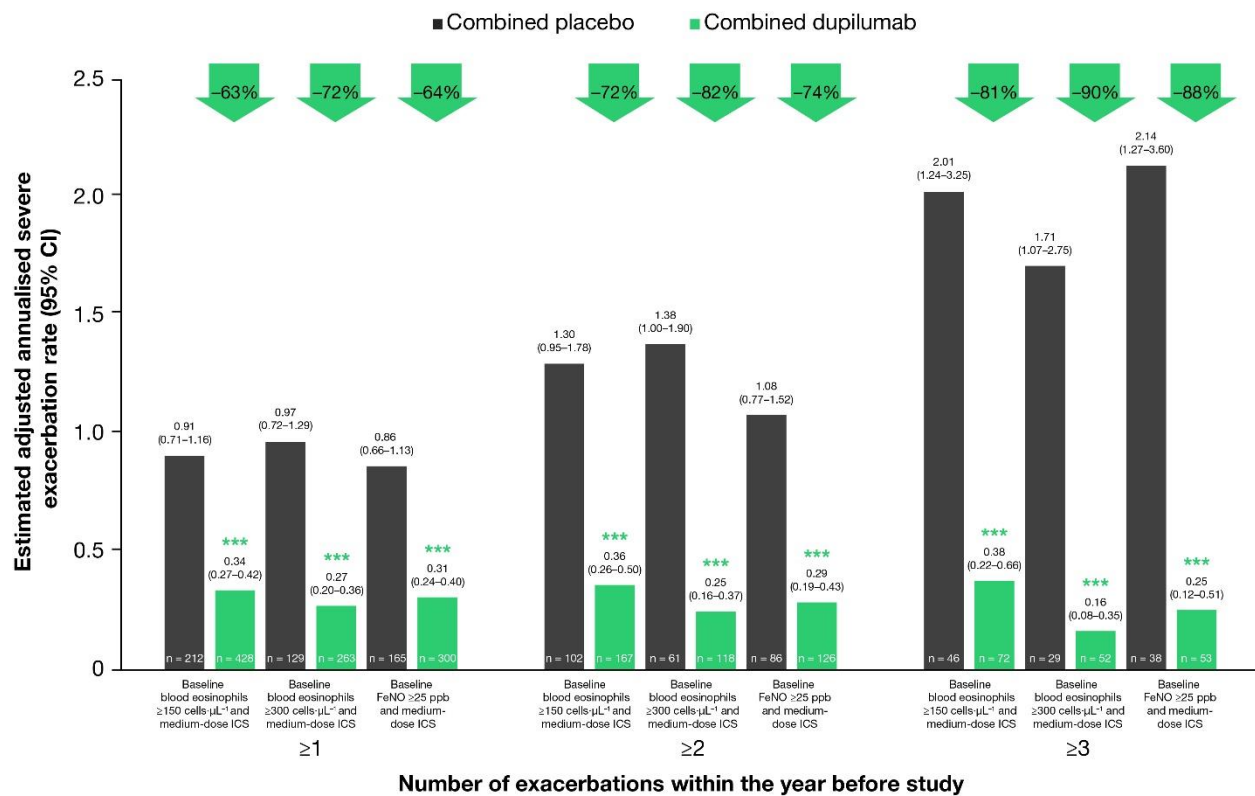
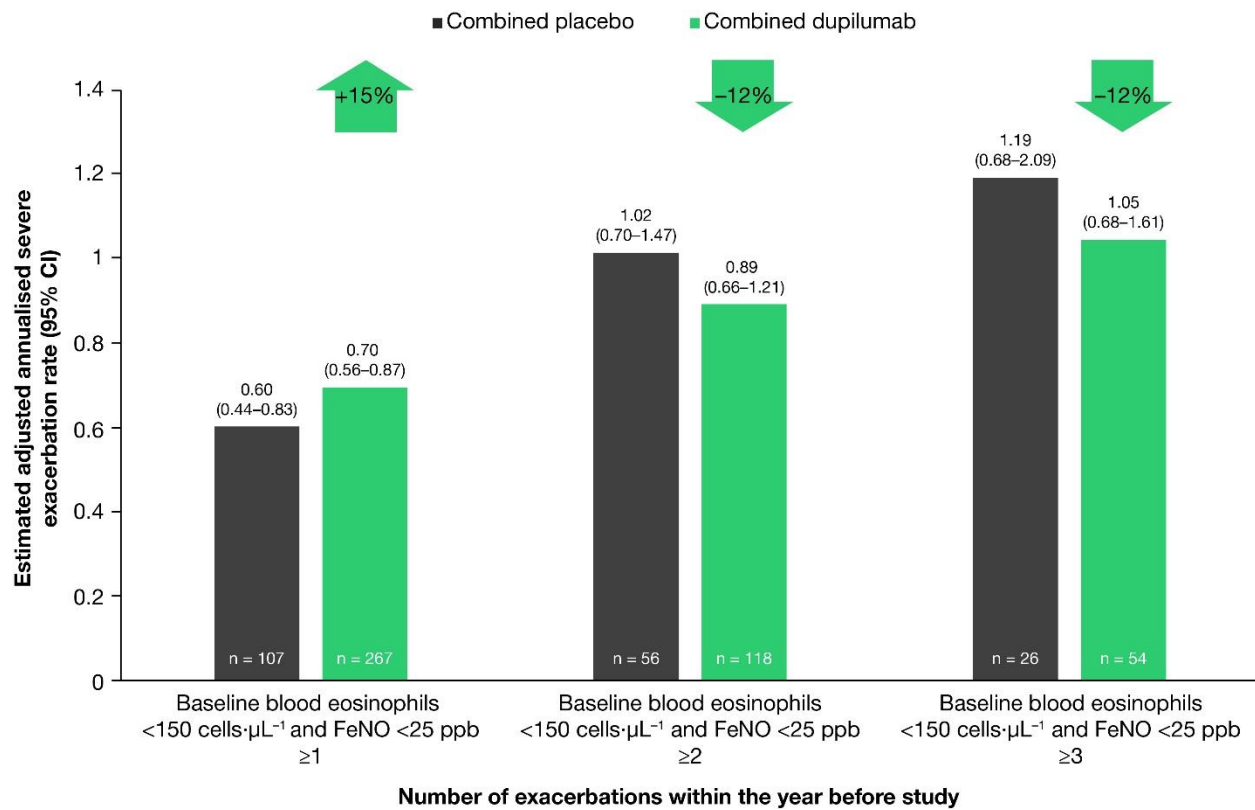


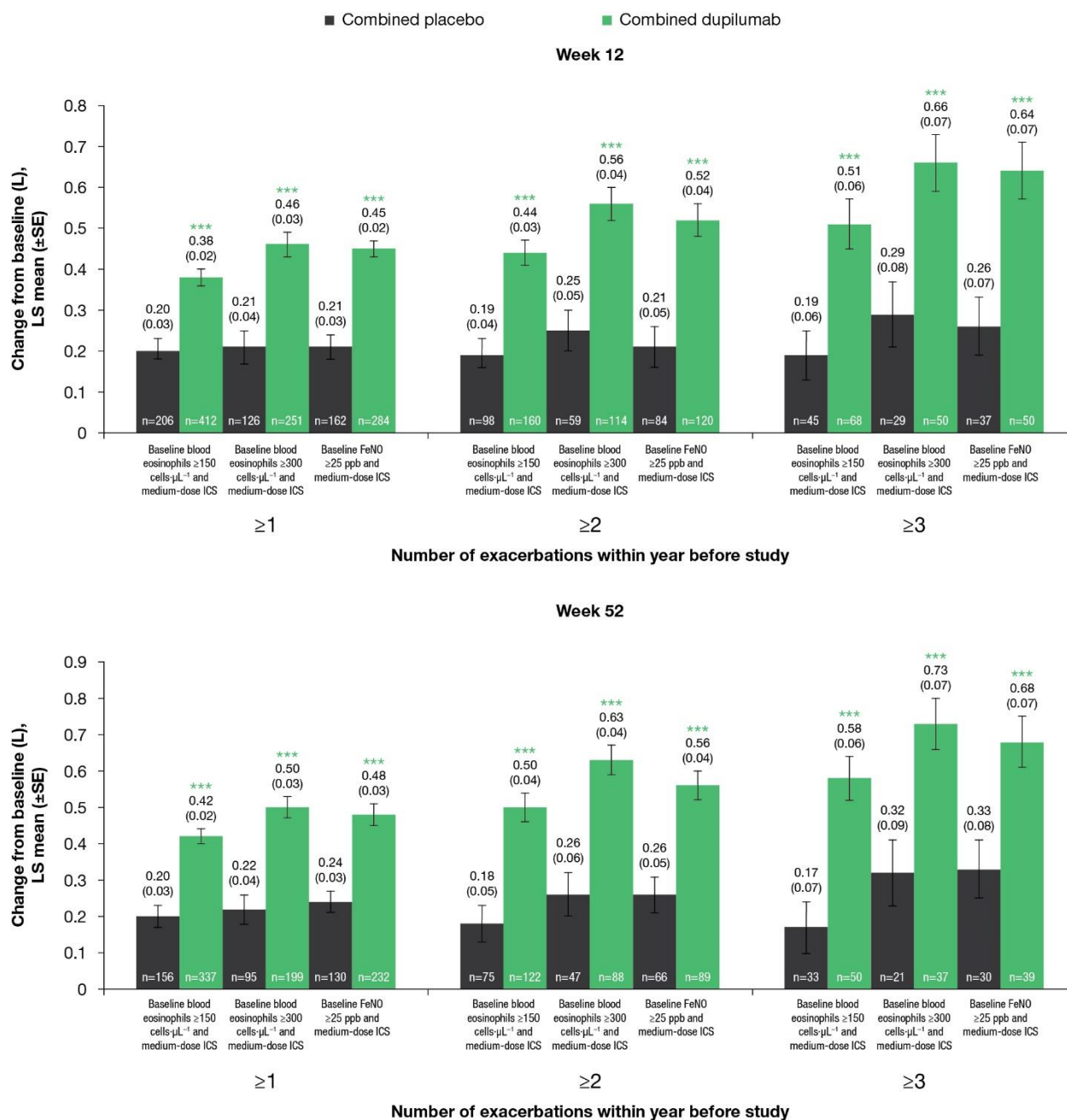
SUPPLEMENTARY FIGURE S1 Reduction of annualised rate of severe exacerbations during the 52-week intervention period by exacerbation history ( $\geq 1$ ,  $\geq 2$  or  $\geq 3$ ) in the subgroups of patients with a) baseline blood eosinophils  $\geq 150$  cells· $\mu\text{L}^{-1}$ , baseline blood eosinophils  $\geq 300$  cells· $\mu\text{L}^{-1}$ , baseline FeNO  $\geq 25$  ppb and medium-dose ICS and b) baseline blood eosinophils  $< 150$  cells· $\mu\text{L}^{-1}$  and FeNO  $< 25$  ppb.  
CI: confidence interval; FeNO: fractional exhaled nitric oxide; ICS: inhaled corticosteroid; LS: least squares; ppb: parts per billion; Q2W: every 2 weeks. \*\*\* :  $p < 0.001$  versus placebo.

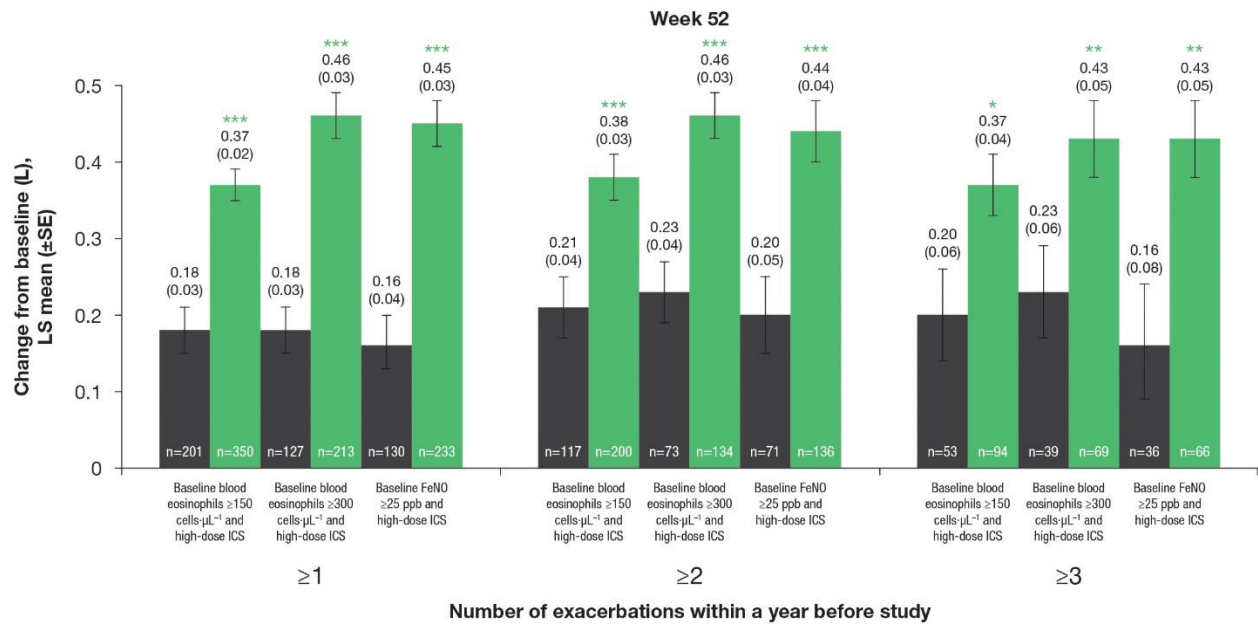
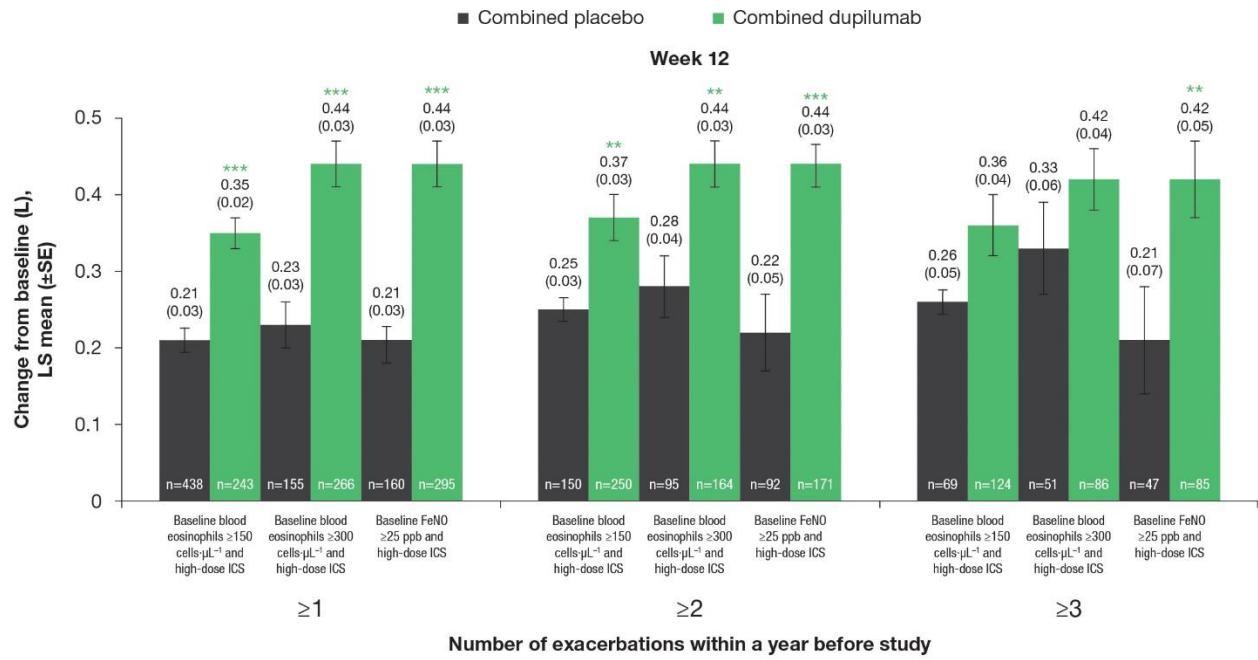


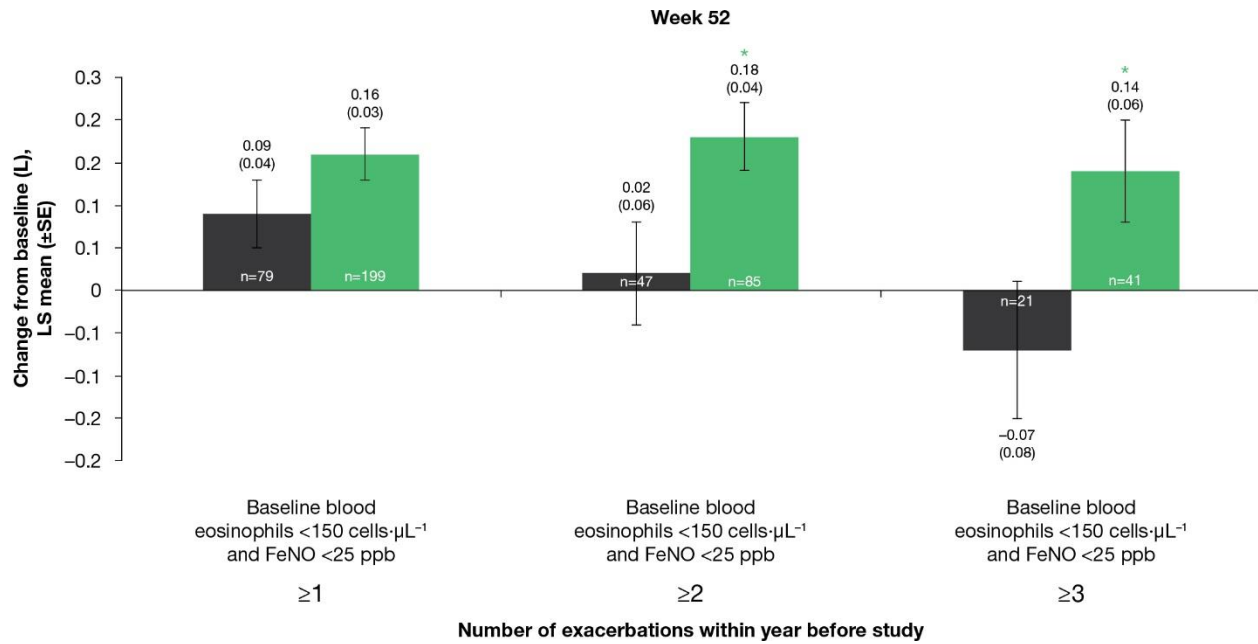
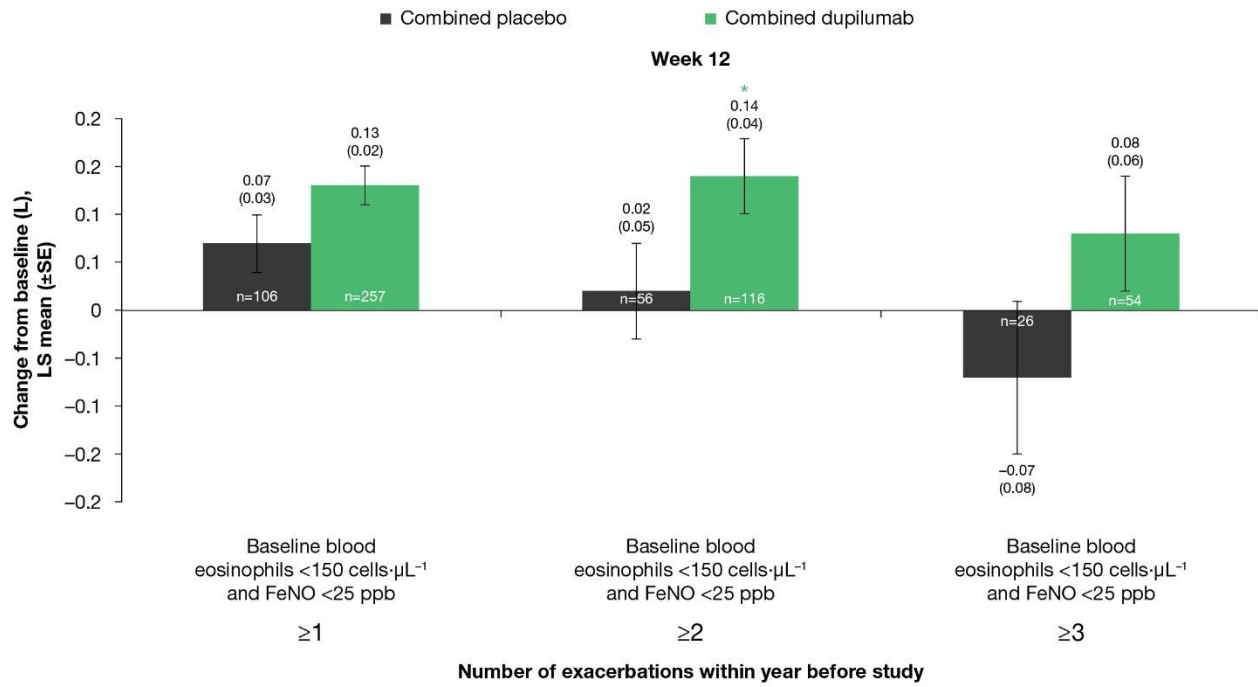


SUPPLEMENTARY FIGURE S2 LS mean change from baseline at week 12 and week 52 in pre-BD FEV<sub>1</sub> (L) by exacerbation history ( $\geq 1$ ,  $\geq 2$  or  $\geq 3$ ) in the subgroups of patients with a) baseline blood eosinophils  $\geq 150$  cells· $\mu\text{L}^{-1}$ , baseline blood eosinophils  $\geq 300$  cells· $\mu\text{L}^{-1}$ , baseline FeNO  $\geq 25$  ppb and medium-dose ICS, b) baseline blood eosinophils  $\geq 150$  cells· $\mu\text{L}^{-1}$ , baseline blood eosinophils  $\geq 300$  cells· $\mu\text{L}^{-1}$ , baseline FeNO  $\geq 25$  ppb and high-dose ICS, and c) baseline blood eosinophils  $< 150$  cells· $\mu\text{L}^{-1}$  and FeNO  $< 25$  ppb.

BD: bronchodilator; FeNO: fractional exhaled nitric oxide; FEV<sub>1</sub>: forced expiratory volume in 1 second; ICS: inhaled corticosteroid; LS: least squares; ppb: parts per billion; SE, standard error. \* :  $p < 0.05$  versus placebo, \*\*\* :  $p < 0.001$  versus placebo.







SUPPLEMENTARY FIGURE S3 LS mean change from baseline at week 24 and week 52 in ACQ-5 score by exacerbation history ( $\geq 1$ ,  $\geq 2$  or  $\geq 3$ ) in the subgroup of patients with a) baseline blood eosinophils  $\geq 150$  cells· $\mu\text{L}^{-1}$ , baseline blood eosinophils  $\geq 300$  cells· $\mu\text{L}^{-1}$ , baseline FeNO  $\geq 25$  ppb and medium-dose ICS, b) baseline blood eosinophils  $\geq 150$  cells· $\mu\text{L}^{-1}$ , baseline blood eosinophils  $\geq 300$  cells· $\mu\text{L}^{-1}$ , baseline FeNO  $\geq 25$  ppb and high-dose ICS, and c) baseline blood eosinophils  $< 150$  cells· $\mu\text{L}^{-1}$  and FeNO  $< 25$  ppb.

ACQ-5: 5-item Asthma Control Questionnaire; FeNO: fractional exhaled nitric oxide; ICS: inhaled corticosteroid; LS: least squares; ppb: parts per billion; SE, standard error. \* :  $p < 0.05$  versus placebo, \*\* :  $p < 0.01$  versus placebo, \*\*\* :  $p < 0.001$  versus placebo.

