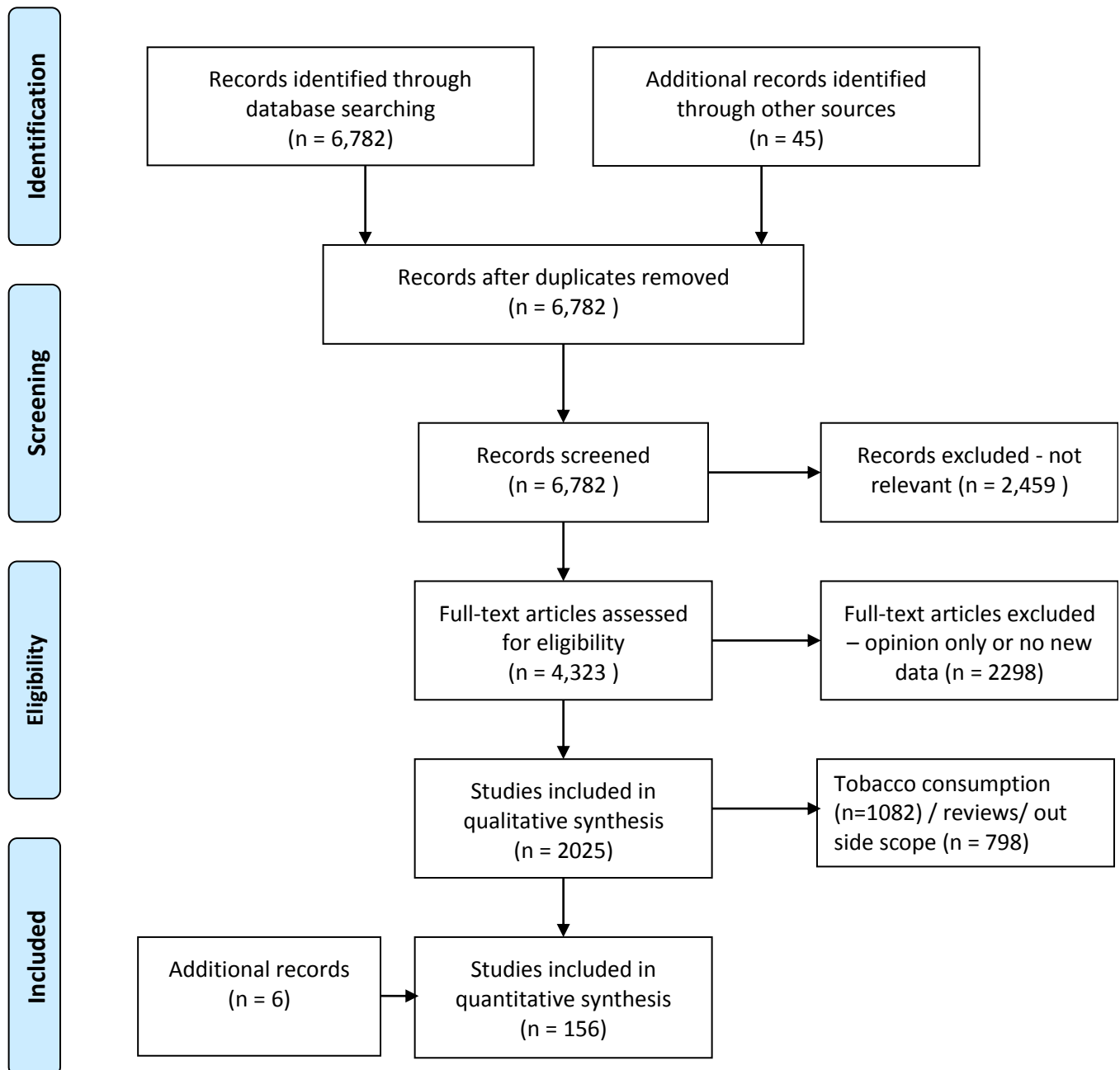




PRISMA 2009 Flow Diagram



From: Moher D, Liberati A, Tetzlaff J, Altman DG, The PRISMA Group (2009). Preferred Reporting Items for Systematic Reviews and Meta-Analyses: The PRISMA Statement. PLoS Med 6(7): e1000097. doi:10.1371/journal.pmed1000097

For more information, visit www.prisma-statement.org.

CINAHL November 12, 2017

#	Query	Results
S12	S3 AND S8 AND S11	50
S11	S9 OR S10	194,121
S10	((pregnan* or antenatal or prenatal or perinatal or peripartal pr peripartum or natal or gravidit* or gravida* or multigravid* or primigravid*)) OR ((expectant N0 (mother* or wom#n or female*)))	188,273
S9	(MH "Pregnancy+")	152,525
S8	S4 OR S5 OR S6 OR S7	221,560
S7	((exercise N2 (therap* or training))) OR ((physical* N2 (endurance or exertion* or fitness or therap* or program* or training))) OR ((physiotherap* or kinesiotherap*))	98,578
S6	(MH "Physical Fitness+") OR (MH "Physical Endurance+") OR (MH "Exertion+") OR (MH "Physical Education and Training+")	81,075
S5	(MH "Physical Therapy+") OR (MH "Chest Physical Therapy+") OR (MH "Physical Therapy Practice") OR (MH "Physical Therapy Practice, Research-Based") OR (MH "Physical Therapy Practice, Evidence-Based") OR (MH "Physical Therapy Service") OR (MH "Physical Therapists")	114,899
S4	(MH "Exercise+") OR (MH "Therapeutic Exercise+") OR (MH "Respiratory Therapy") OR (MH "Respiratory Therapy Service")	101,374
S3	S1 OR S2	42,103
S2	((cystic fibros* or asthma* or bronchiectas*)) OR ((primary ciliary dyskines* or kartagener))	42,032
S1	(MH "Cystic Fibrosis") OR (MH "Asthma+") OR (MH "Bronchiectasis") OR (MH "Ciliary Motility Disorders")	33,551