

[Online Data Supplement]

**Prognostic factors associated with long-term mortality in 1,445 patients with
nontuberculous mycobacterial pulmonary disease: a 15-year follow-up study**

Byung Woo Jhun, Seong Mi Moon, Kyeongman Jeon, O Jung Kwon, Heejin Yoo, Keumhee
C. Carriere, Hee Jae Huh, Nam Yong Lee, Sung Jae Shin, Charles L. Daley, Won-Jung Koh

Table S1 Characteristics of study patients according to etiology of nontuberculous mycobacteria

Characteristics	<i>M. avium</i> (n=655)	<i>M. intracellulare</i> (n=487)	<i>M. abscessus</i> (n=129)	<i>M. massiliense</i> (n=174)	p-value
Age ≥65 years	218 (33)	219 (45)	35 (27)	37 (21)	<0.001
Male	264 (40)	220 (45)	39 (30)	35 (20)	<0.001
Ex- or current smoker	181 (28)	154 (32)	24 (19)	24 (14)	<0.001
Body mass index <18.5 kg/m ²	94 (14)	159 (33)	28 (22)	31 (18)	<0.001
Underlying disease					
Previous pulmonary tuberculosis	197 (30)	212 (44)	69 (54)	88 (51)	<0.001
Chronic obstructive pulmonary disease or bronchial asthma	62 (9)	76 (16)	4 (3)	5 (3)	<0.001
Chronic pulmonary aspergillosis	8 (1)	11 (2)	5 (4)	7 (4)	0.059
Pulmonary malignancy	13 (2)	27 (6)	3 (2)	2 (1)	0.002
Extra-pulmonary malignancy	108 (17)	73 (15)	11 (9)	16 (9)	0.020
Diabetes mellitus	54 (8)	37 (8)	4 (3)	6 (4)	0.042
Chronic heart disease	64 (10)	54 (11)	6 (5)	12 (7)	0.093
Chronic liver disease	49 (8)	32 (6)	8 (6)	15 (9)	0.781
Symptom					
Cough	421 (64)	363 (75)	101 (78)	143 (82)	<0.001
Sputum	450 (69)	366 (75)	107 (83)	141 (81)	<0.001

Hemoptysis	123 (19)	94 (19)	48 (37)	59 (34)	<0.001
Erythrocyte sedimentation rate (mm/hr) [¶]	27 (15–45)	30 (17–59)	33 (19–51)	39 (20–57)	<0.001
Sputum smear positivity	244 (37)	252 (52)	93 (72)	112 (64)	<0.001
Radiological form					<0.001
Non-cavitary nodular bronchiectatic	534 (82)	309 (63)	87 (67)	114 (65)	
Cavitary nodular bronchiectatic	48 (7)	48 (10)	23 (18)	24 (14)	
Fibro-cavitary	73 (11)	130 (27)	19 (15)	36 (21)	
Treatment initiation	361 (55)	342 (70)	70 (54)	120 (69)	<0.001

Data are presented as no. (%) or median (interquartile range). [¶]n=1181 due to missing data.

Table S2 Characteristics of study patients according to radiological form of nontuberculous mycobacteria

Characteristics	Non-cavitary nodular bronchiectatic (n=1044)	Cavitary nodular bronchiectatic (n=143)	Fibrocavitary (n=258)	p-value
Age ≥65 years	360 (34)	44 (31)	105 (41)	0.087
Male	350 (34)	33 (23)	175 (68)	<0.001
Ex- or current smoker	222 (21)	26 (18)	135 (52)	<0.001
Body mass index <18.5 kg/m ²	162 (16)	46 (32)	104 (40)	<0.001
Underlying disease				
Previous pulmonary tuberculosis	318 (30)	66 (46)	182 (71)	<0.001
Chronic obstructive pulmonary disease or bronchial asthma	73 (7)	8 (6)	66 (26)	<0.001
Chronic pulmonary aspergillosis	2 (1)	1 (1)	28 (11)	<0.001
Pulmonary malignancy	24 (2)	0 (0)	21 (8)	<0.001
Extra-pulmonary malignancy	166 (16)	8 (6)	34 (13)	0.004
Diabetes mellitus	67 (6)	8 (6)	26 (10)	0.094
Chronic heart disease	109 (10)	13 (9)	14 (5)	0.047
Chronic liver disease	71 (7)	11 (8)	22 (9)	0.612
Symptom				
Cough	716 (69)	103 (72)	209 (81)	<0.001
Sputum	739 (71)	110 (77)	215 (83)	<0.001

Hemoptysis	222 (21)	48 (34)	54 (21)	0.003
Erythrocyte sedimentation rate (mm/hr) [¶]	25 (15–42)	39 (23–65)	51 (23–75)	<0.001
Sputum smear positivity	387 (37)	101 (71)	213 (83)	<0.001
Etiology				<0.001
<i>M. avium</i>	534 (51)	48 (34)	73 (28)	
<i>M. intracellulare</i>	309 (30)	48 (34)	130 (51)	
<i>M. abscessus</i>	87 (8)	23 (16)	19 (7)	
<i>M. massiliense</i>	114 (11)	24 (16)	36 (14)	
Treatment initiation	550 (53)	120 (84)	223 (86)	<0.001

Data are presented as no. (%) or median (interquartile range). [¶]n=1181 due to missing data.

Figure S1. Cumulative survival rates of patients with nontuberculous mycobacterial pulmonary disease according to treatment initiation.

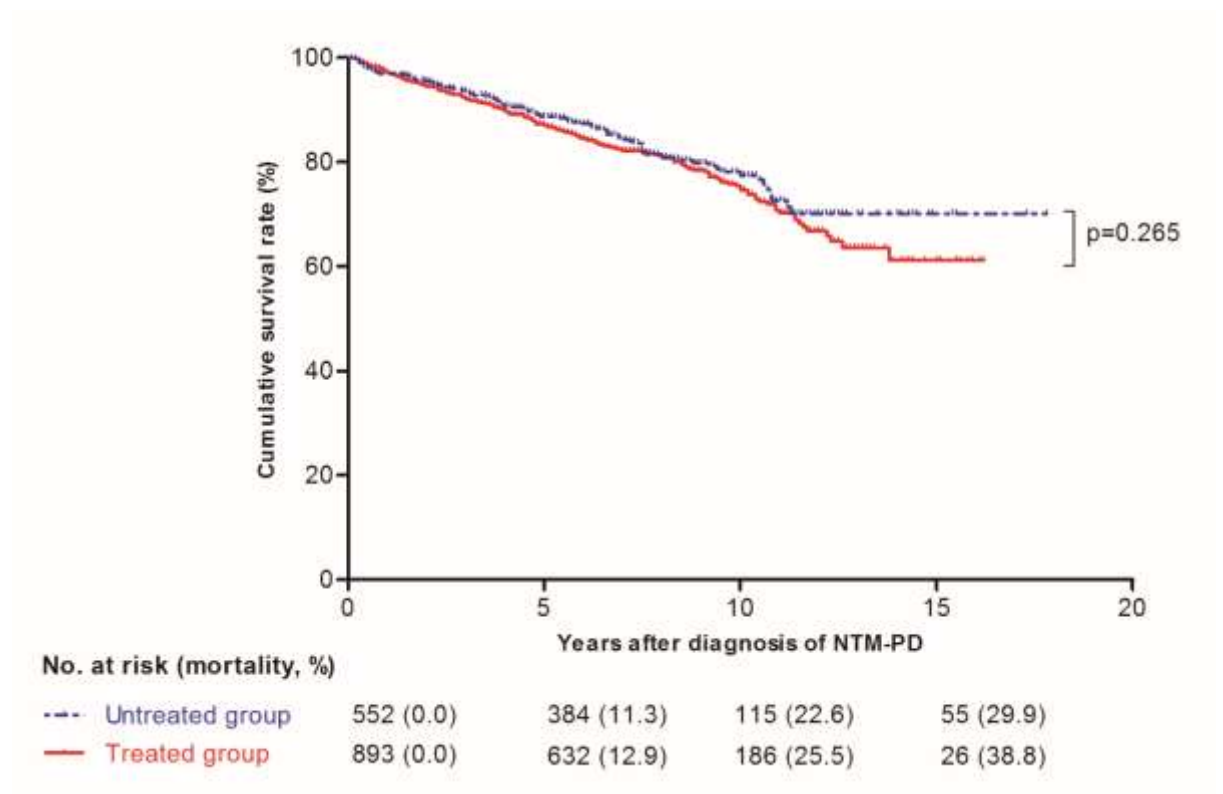


Figure S2. Cumulative survival rates of patients with nontuberculous mycobacterial pulmonary disease according to treatment initiation for the different etiologies. *M. avium* vs. *M. intracellulare* (A) and *M. massiliense* vs. *M. abscessus* (B).

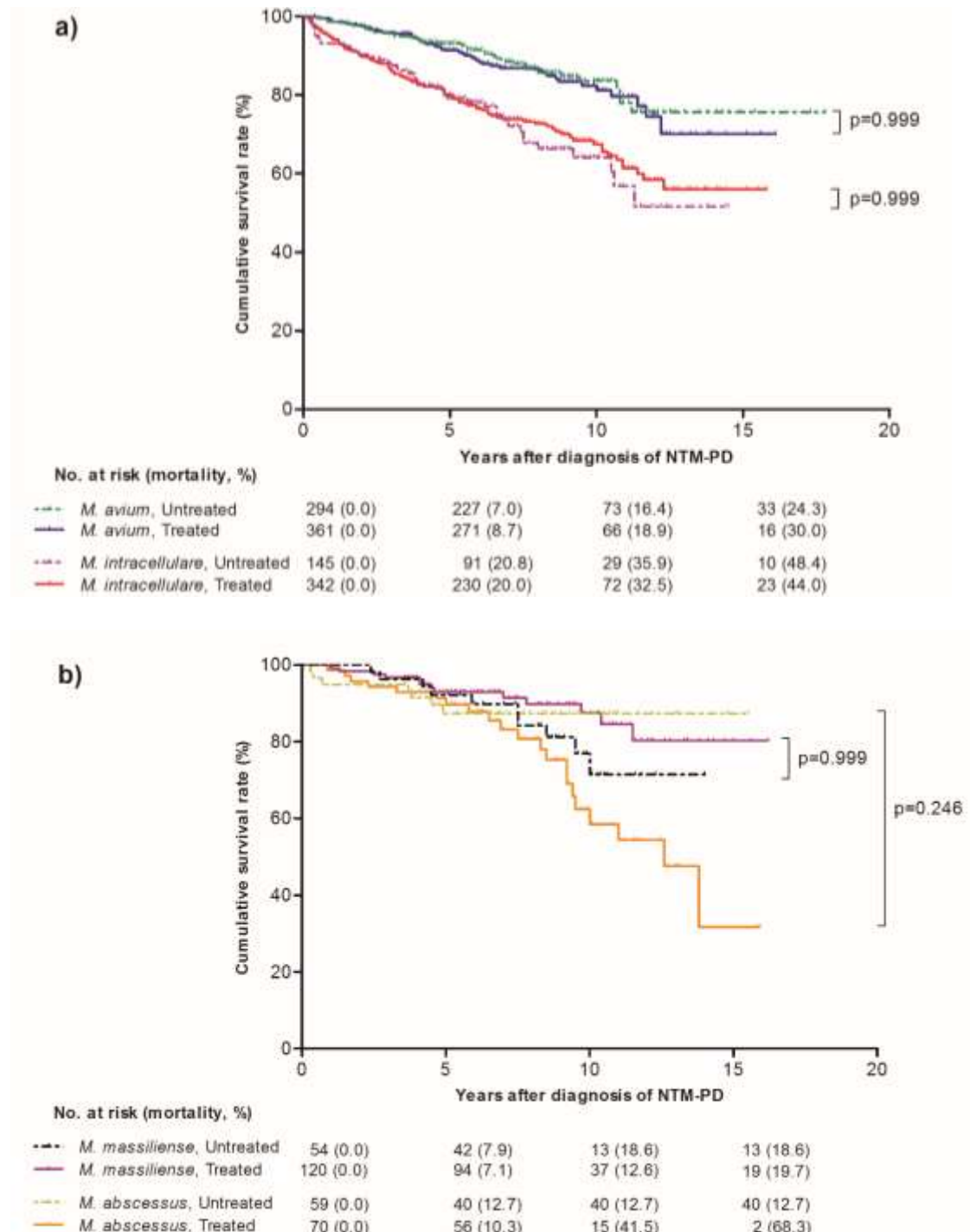


Figure S3. Cumulative survival rates of patients with nontuberculous mycobacterial pulmonary disease according to treatment initiation for the different radiological forms.

