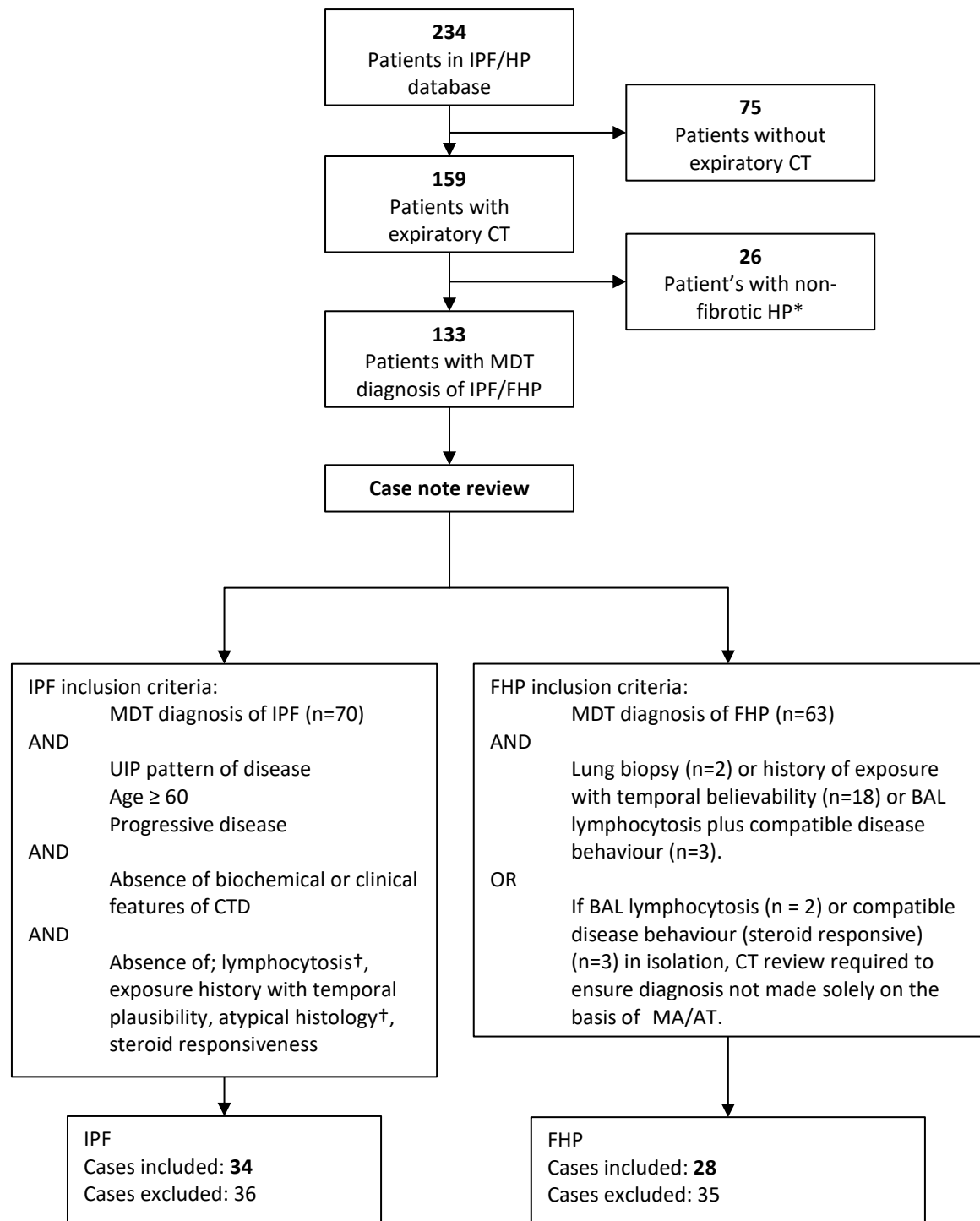


Supplementary figure S1; consort diagram for derivation cohort. † data used where available



Supplementary figure S2; consort diagram for validation cohort. \*Fibrotic HP was defined as the presence of traction bronchiectasis or honeycombing in a patient with an MDT diagnosis of HP. This was reviewed by one radiologist (JB), and cases without fibrosis were excluded. † data used where available.

Supplementary table S1: Categorical Scoring System for MA Variables  
Each MA variable (low density lobules, preserved lobules, expiratory air trapping) was scored on a lobar basis, with the lingua defined as the 6<sup>th</sup> lobe.

Extent	Score
not present in lobe	0
one – two lobules	1
three – four lobules	2
five – six lobules	3
seven – eight lobules	4
nine – ten lobules	5
more than ten lobules	6