




# Budesonide/formoterol MDI with co-suspension delivery technology in COPD: the TELOS study

Gary T. Ferguson<sup>1</sup>, Alberto Papi <sup>2</sup>, Antonio Anzueto<sup>3</sup>, Edward M. Kerwin<sup>4</sup>, Christy Cappelletti<sup>5</sup>, Elizabeth A. Duncan<sup>5</sup>, Jack Nyberg<sup>6</sup> and Paul Dorinsky<sup>5</sup>

**Affiliations:** <sup>1</sup>Pulmonary Research Institute of Southeast Michigan, Farmington Hills, MI, USA. <sup>2</sup>Research Centre on Asthma and COPD, Dept of Medical Sciences, University of Ferrara, Ferrara, Italy. <sup>3</sup>Pulmonary Medicine and Critical Care, University of Texas Health Science Center and South Texas Veterans Health Care System, San Antonio, TX, USA. <sup>4</sup>Clinical Research Institute of Southern Oregon, Medford, OR, USA. <sup>5</sup>Pearl – a member of the AstraZeneca Group, Durham, NC, USA. <sup>6</sup>Pearl – a member of the AstraZeneca Group, Morristown, NJ, USA.

**Correspondence:** Gary T. Ferguson, Pulmonary Research Institute of Southeast Michigan, 29255 West 10 Mile Road, Suite A, Farmington Hills, MI 48336, USA. E-mail: garytferguson@msn.com

 @ERSpublications

**TELOS: co-suspension delivery technology budesonide/formoterol fumarate dihydrate in a metered dose inhaler improved lung function and time to first and rate of exacerbations versus monocomponents in patients with moderate to very severe COPD** <http://ow.ly/ffWo30lrJL6>

**Cite this article as:** Ferguson GT, Papi A, Anzueto A, *et al.* Budesonide/formoterol MDI with co-suspension delivery technology in COPD: the TELOS study. *Eur Respir J* 2018; 52: 1801334 [<https://doi.org/10.1183/13993003.01334-2018>].

**ABSTRACT** TELOS compared budesonide (BD)/formoterol fumarate dihydrate (FF) metered dose inhaler (BFF MDI), formulated using innovative co-suspension delivery technology that enables consistent aerosol performance, with its monocomponents and budesonide/formoterol fumarate dihydrate dry powder inhaler (DPI) in patients with moderate to very severe chronic obstructive pulmonary disease (COPD), without a requirement for an exacerbation history.

In this phase III, double-blind, parallel-group, 24-week study (NCT02766608), patients were randomised to BFF MDI 320/10 µg (n=664), BFF MDI 160/10 µg (n=649), FF MDI 10 µg (n=648), BD MDI 320 µg (n=209) or open-label budesonide/formoterol DPI 400/12 µg (n=219). Primary end-points were change from baseline in morning pre-dose trough forced expiratory volume in 1 s (FEV<sub>1</sub>) and FEV<sub>1</sub> area under the curve from 0–4 h (AUC<sub>0–4</sub>). Time to first and rate of moderate/severe exacerbations were assessed.

BFF MDI 320/10 µg improved pre-dose trough FEV<sub>1</sub> versus FF MDI (least squares mean (LSM) 39 mL; p=0.0018), and BFF MDI 320/10 µg and 160/10 µg improved FEV<sub>1</sub> AUC<sub>0–4</sub> versus BD MDI (LSM 173 mL and 157 mL, respectively; both p<0.0001) at week 24. BFF MDI 320/10 µg and 160/10 µg improved time to first and rate of moderate/severe exacerbations versus FF MDI. Treatments were well tolerated, with pneumonia incidence ranging from 0.5–1.4%.

BFF MDI improved lung function versus monocomponents and exacerbations versus FF MDI in patients with moderate to very severe COPD.

---

This article has supplementary material available from [erj.ersjournals.com](http://erj.ersjournals.com)

This study is registered at [ClinicalTrials.gov](http://ClinicalTrials.gov) with identifier number NCT02766608. Data underlying the findings described in this manuscript may be obtained in accordance with AstraZeneca's data sharing policy described at <https://astrazenecagrouptrials.pharmacm.com/ST/Submission/Disclosure>

Received: July 16 2018 | Accepted after revision: Aug 12 2018

Copyright ©ERS 2018. This article is open access and distributed under the terms of the Creative Commons Attribution Non-Commercial Licence 4.0.

## Introduction

Recommendations for the use of inhaled corticosteroids (ICS) in the treatment of chronic obstructive pulmonary disease (COPD) have changed over recent years. Dual ICS/long-acting  $\beta_2$ -agonist (LABA) therapy is currently recommended as an optional treatment for patients with a high risk of COPD exacerbations [1]. Previous studies have shown that combined ICS/LABA treatment was more effective than ICS or LABA monotherapy or placebo in improving lung function, dyspnoea and health status, and in reducing the rate of exacerbations [2–11]. Previous findings also suggest that patients with higher blood eosinophil levels may benefit more from therapies that include an ICS with regard to reducing the risk of exacerbations than those with lower eosinophil levels [12–14].

The ICS/LABA budesonide (BD)/formoterol fumarate dihydrate (FF) metered dose inhaler (BFF MDI), formulated using innovative co-suspension delivery technology, is currently being developed as a maintenance treatment for patients with COPD. Co-suspension delivery technology enables reliable aerosol performance and consistent drug delivery, even in the presence of simulated patient-handling errors, unlike drug crystal-only suspensions [15, 16]. In a scintigraphy study, co-suspension delivery technology MDIs have also been shown to provide effective delivery throughout the whole lung [17].

The TELOS study examined the efficacy and safety of 24 weeks of treatment with two doses of BFF MDI (320/10  $\mu\text{g}$  and 160/10  $\mu\text{g}$ ) compared with BD MDI 320  $\mu\text{g}$ , FF MDI 10  $\mu\text{g}$  and budesonide/formoterol fumarate dihydrate dry powder inhaler (DPI) 400/12  $\mu\text{g}$  in symptomatic patients (COPD Assessment Test (CAT) score  $\geq 10$ ) with moderate to very severe COPD, without a requirement for a history of exacerbations. The relationship between baseline blood eosinophil count and improvements in lung function and COPD exacerbations was also investigated. Following a phase IIb BFF MDI dose-ranging study [18], two doses of BFF MDI were included to investigate whether there was a dose ordering effect of budesonide on therapeutic response.

## Methods

### Study population

Eligible patients were current or former smokers ( $\geq 10$  pack-years), 40–80 years of age, with an established clinical history of COPD, as defined by American Thoracic Society/European Respiratory Society [19] or locally applicable guidelines. Patients had to be symptomatic (CAT score  $\geq 10$ ) despite treatment with one or more inhaled bronchodilator as COPD maintenance therapy for  $\geq 6$  weeks prior to screening. There was no requirement for prior COPD exacerbations.

Patients were required to have a forced expiratory volume in 1 s (FEV<sub>1</sub>) to forced vital capacity (FVC) ratio  $< 0.70$  and FEV<sub>1</sub>  $< 80\%$  of predicted normal value at the first screening visit, and a post-bronchodilator FEV<sub>1</sub>/FVC ratio  $< 0.70$  and post bronchodilator FEV<sub>1</sub>  $\geq 30\%$  but  $< 80\%$  of predicted normal value at the second screening visit. If the post-bronchodilator FEV<sub>1</sub> was  $< 30\%$  of predicted normal at the second screening visit, then FEV<sub>1</sub> must have been  $\geq 750$  mL. At randomisation, the average of the 30-min and 60-min pre-dose FEV<sub>1</sub> assessments must have been  $< 80\%$  of predicted normal value.

Exclusion criteria included treatment with ICS, long-acting muscarinic antagonist and LABA as triple maintenance therapy in the past 30 days, a diagnosis of a respiratory disorder other than COPD (including a current diagnosis of asthma) or COPD due to  $\alpha_1$ -antitrypsin deficiency. Patients who were hospitalised within 6 weeks, or who had been treated with systemic corticosteroids and/or antibiotics for COPD within 4 weeks prior to screening were excluded, as were patients with other clinically relevant diseases that could impact on study findings. Additional exclusion criteria included a change in smoking status within 6 weeks prior to or during screening, requirement for long-term oxygen therapy ( $\geq 15$  h per day) or the need to use a spacer device with an MDI. Patients were required to demonstrate an acceptable MDI administration technique, as assessed by study site personnel.

### Study design and treatment

TELOS, a randomised, double-blind, parallel-group, 24-week, phase III study, was conducted at 253 sites across seven countries (Canada, Czech Republic, Germany, Hungary, Poland, Russia and the USA) between June 2016 and November 2017. Study site personnel randomised patients 3:3:3:1:1 using an Interactive Web Response System to treatment with BFF MDI 320/10  $\mu\text{g}$ , BFF MDI 160/10  $\mu\text{g}$ , FF MDI 10  $\mu\text{g}$ , BD MDI 320  $\mu\text{g}$  or open-label budesonide/formoterol DPI 400/12  $\mu\text{g}$  (Symbicort® Turbohaler®; AstraZeneca UK Limited, Luton, UK). All treatments were administered as two inhalations twice daily for 24 weeks. Formoterol fumarate dihydrate 10  $\mu\text{g}$  is equivalent to formoterol fumarate 9.6  $\mu\text{g}$ . Budesonide/formoterol DPI was given as two inhalations of 200/6  $\mu\text{g}$ , equivalent to a total delivered dose of 320/9  $\mu\text{g}$ . BFF MDI, FF MDI and BD MDI were given in identical MDI devices, and all participants, investigators and study personnel were blinded to the MDI treatment assigned.

Eligible patients were required to discontinue COPD treatment with prohibited medications during screening and for the duration of the study. Patients who received an ICS as part of their inhaled maintenance therapy continued the ICS component during the screening period. ICS were discontinued at randomisation. Salbutamol sulfate (albuterol sulfate; Ventolin® HFA; GlaxoSmithKline, Research Triangle Park, NC, USA) was used as rescue medication throughout the study as needed for symptoms. Xanthine- or caffeine-containing foods or beverages and caffeine-containing medications were prohibited for  $\geq 6$  h prior to, and for the duration of, each in-clinic study visit.

Randomisation was stratified by reversibility to salbutamol (yes/no), post-bronchodilator FEV<sub>1</sub> at the second screening visit (<50%, or 50% to <80% predicted), baseline blood eosinophil count (<150 or  $\geq 150$  cells per mm<sup>3</sup>; enrolment was targeted to achieve a 1:2 ratio of the number of patients with blood eosinophil levels <150 cells per mm<sup>3</sup> relative to  $\geq 150$  cells per mm<sup>3</sup>) and country.

The study was conducted in accordance with the Declaration of Helsinki, the International Council for Harmonisation/Good Clinical Practice and applicable regulatory requirements. The study protocol and informed consent form were reviewed and approved by the appropriate independent ethics committee or institutional review board, and patients provided written informed consent prior to screening. Protocol amendments pertaining to study end-points or data analyses are shown in supplementary table S1. This study is registered with ClinicalTrials.gov, number NCT02766608.

### ***Efficacy end-points and assessments***

Two registration approaches, US and EU, were used in the study. Primary and secondary end-points, and the time frames of each, differed according to regional regulatory requirements.

For the US approach, change from baseline in morning pre-dose trough FEV<sub>1</sub> (BFF MDI *versus* FF MDI) and change from baseline in FEV<sub>1</sub> area under the curve from 0–4 h (AUC<sub>0–4</sub>) (BFF MDI *versus* BD MDI), both at week 24, analysed using the efficacy estimand were primary end-points. The same end-points analysed using the attributable estimand were secondary end-points. Change from baseline in morning pre-dose trough FEV<sub>1</sub> at week 24 (BFF MDI *versus* BD MDI; efficacy estimand) was a secondary end-point. Other secondary end-points in the US approach were peak change from baseline in FEV<sub>1</sub> at week 24 (BFF MDI *versus* BD MDI), time to first moderate/severe COPD exacerbation (BFF MDI *versus* FF MDI), change from baseline in average daily rescue salbutamol use over 24 weeks (BFF MDI *versus* BD MDI), percentage of patients with an improvement in St George's Respiratory Questionnaire (SGRQ) total score  $\geq 4$  at week 24 (BFF MDI *versus* BD MDI and FF MDI) and time to onset of action as assessed by FEV<sub>1</sub> on day 1 (BFF MDI *versus* BD MDI). Additional end-points included the rate of moderate/severe COPD exacerbations. End-points for the EU approach, which generally analysed end-points over 24 weeks (rather than at week 24), are described in the supplementary materials.

COPD exacerbations are defined in the supplementary materials and were considered moderate if they resulted in use of systemic corticosteroids and/or antibiotics for  $\geq 3$  days, and severe if they resulted in COPD-related hospitalisation or death. Pre-specified subgroup analysis of the two primary end-points and the rate of moderate/severe COPD exacerbations was performed based on a baseline blood eosinophil count of <150 cells per mm<sup>3</sup> and  $\geq 150$  cells per mm<sup>3</sup>. Blood eosinophil counts were measured at screening visit 1 and at randomisation, and the mean of the non-missing values was recorded as the baseline blood eosinophil count. Further details on efficacy assessments are included in the supplementary materials.

### ***Safety evaluation***

Safety assessments included physical examinations, vital signs assessments, 12-lead ECG and clinical laboratory testing. Adverse events were monitored throughout the study. Predefined criteria for identifying and reporting pneumonia and major adverse cardiovascular events (MACE) were implemented, which are described in the supplementary materials. An external, independent clinical end-point committee reviewed all adverse events reported as pneumonia and adverse events that potentially met MACE criteria.

### ***Statistical analysis***

The intent-to-treat (ITT) and safety populations were defined as all patients who were randomised and received study treatment. The ITT population was analysed according to the treatment patients were randomised to and the safety population was analysed by the treatment received. The modified intent-to-treat (mITT) population included ITT population data that were obtained post-randomisation but prior to discontinuation from treatment.

The primary estimand was the efficacy estimand, which was defined as the effect of the randomised treatment in all patients assuming continuation of randomised treatments for the duration of the study

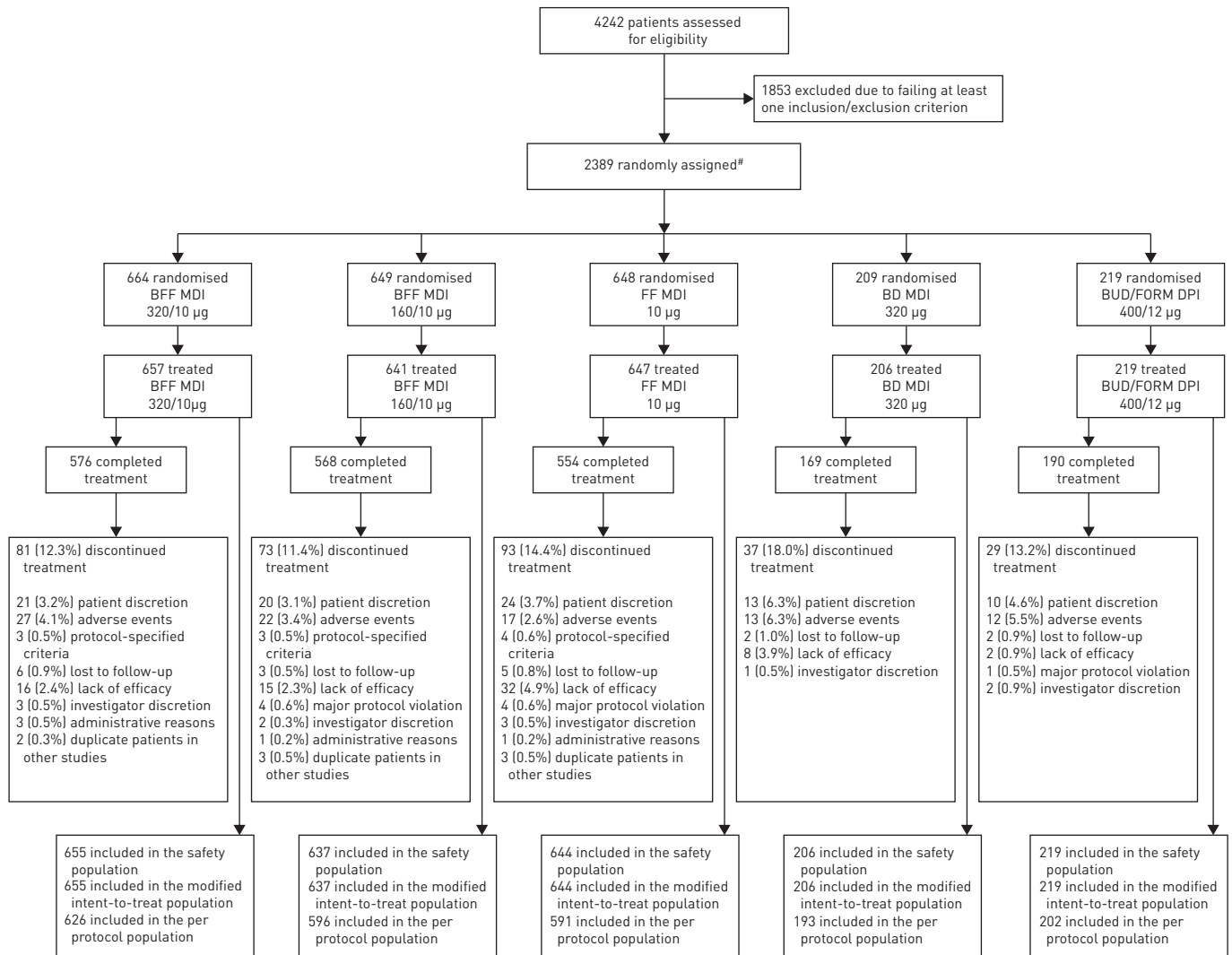


FIGURE 1 Patient disposition. BD: budesonide; BFF: budesonide/formoterol fumarate dihydrate; BUD/FORM DPI: budesonide/formoterol dry powder inhaler; FF: formoterol fumarate dihydrate; MDI: metered dose inhaler. #: 19 patients who were randomised were not treated: 14 did not meet baseline stability criteria; one due to chronic obstructive pulmonary disease diagnosis; one due to eDiary compliance; one due to prohibited medication; one was a screen failure (non-specific); and one was a "mistake". One patient in the BFF MDI 160/10 µg group was identified as a duplicate patient and excluded from the analysis populations, but completed treatment.

regardless of actual compliance. The primary analysis for the efficacy estimand was conducted using the mITT population. An attributable estimand was defined as the effect of treatment in patients attributable to the randomised treatment, and considered treatment discontinuation due to lack of efficacy or tolerability as a bad outcome. Analyses of the attributable estimand were conducted using the mITT population, but with imputation of data following treatment discontinuation.

The two primary end-points were analysed using a repeated measures linear mixed model. The model included treatment, visit (and treatment by visit interaction) and ICS use at screening as categorical covariates, and baseline FEV<sub>1</sub>, baseline blood eosinophil count and percent reversibility to salbutamol as continuous covariates. An unstructured covariance matrix was used to model correlation within a patient. Two-sided p-values and point estimates with two-sided 95% confidence intervals were produced for each treatment difference of interest.

The US and EU approaches controlled the type I error for the primary and secondary analyses with a combination of sequential and Hochberg methods (US approach; supplementary figure S1). Comparisons were reported as nominally significant if they were p<0.05 but failed statistical significance due to the type I error control strategy. The statistical analysis methods for secondary end-points, subgroup analyses, type I error control for the EU approach, non-inferiority comparisons and power calculations are detailed in the supplementary materials.

TABLE 1 Baseline demographics and clinical characteristics (safety/modified intent-to-treat population)

|   | BFF MDI<br>320/10 µg<br>(n=655) | BFF MDI<br>160/10 µg<br>(n=637) | FF MDI<br>10 µg<br>(n=644) | BD MDI<br>320 µg<br>(n=206) | BUD/FORM DPI<br>400/12 µg<br>(n=219) | All patients<br>(n=2361) |
|---|---------------------------------|---------------------------------|----------------------------|-----------------------------|--------------------------------------|--------------------------|
| <b>Age<sup>#</sup> years</b>  | 64.2±7.7                        | 64.3±7.6                        | 64.1±8.0                   | 64.2±7.4                    | 65.3±7.0                             | 64.3±7.7                 |
| <b>Male</b>   | 402 (61.4)                      | 377 (59.2)                      | 383 (59.5)                 | 125 (60.7)                  | 141 (64.4)                           | 1428 (60.5)              |
| <b>Race</b>   |                                 |                                 |                            |                             |                                      |                          |
| White   | 633 (96.6)                      | 619 (97.2)                      | 622 (96.6)                 | 197 (95.6)                  | 210 (95.9)                           | 2281 (96.6)              |
| Black   | 19 (2.9)                        | 15 (2.4)                        | 20 (3.1)                   | 9 (4.4)                     | 8 (3.7)                              | 71 (3.0)                 |
| Other   | 3 (0.5)                         | 3 (0.5)                         | 2 (0.3)                    | 0                           | 1 (0.5)                              | 9 (0.4)                  |
| <b>BMI kg·m<sup>-2</sup></b>  | 28.3±5.8                        | 28.5±5.9                        | 28.2±5.9                   | 28.4±6.0                    | 28.6±6.3                             | 28.3±5.9                 |
| <b>Used ICS at screening</b>  | 347 (53.0)                      | 304 (47.7)                      | 303 (47.0)                 | 100 (48.5)                  | 104 (47.5)                           | 1158 (49.0)              |
| <b>Current smoker</b>   | 346 (52.8)                      | 340 (53.4)                      | 348 (54.0)                 | 112 (54.4)                  | 108 (49.3)                           | 1254 (53.1)              |
| <b>Smoking history pack-years<sup>¶</sup></b>                                   | 44.7±23.5                       | 44.7±22.1                       | 44.9±23.8                  | 47.0±23.3                   | 44.4±21.8                            | 44.9±23.0                |
| <b>Total CAT score (0–40)<sup>*</sup></b>                                       | 20.1±5.8                        | 20.4±5.9                        | 20.1±5.7 <sup>§</sup>      | 20.4±6.3                    | 20.4±5.6                             | 20.2±5.8 <sup>f</sup>    |
| <b>Baseline eosinophil count</b>  |                                 |                                 |                            |                             |                                      |                          |
| <150 cells per mm <sup>3</sup>  | 220 (33.6)                      | 231 (36.3)                      | 219 (34.0)                 | 70 (34.0)                   | 70 (32.0)                            | 810 (34.3)               |
| ≥150 cells per mm <sup>3</sup>  | 435 (66.4)                      | 406 (63.7)                      | 425 (66.0)                 | 136 (66.0)                  | 149 (68.0)                           | 1551 (65.7)              |
| <b>Baseline history of moderate/severe COPD exacerbations in the prior year</b> |                                 |                                 |                            |                             |                                      |                          |
| 0 exacerbations   | 487 (74.4)                      | 449 (70.5)                      | 465 (72.2)                 | 157 (76.2)                  | 164 (74.9)                           | 1722 (72.9)              |
| 1 exacerbation  | 138 (21.1)                      | 146 (22.9)                      | 148 (23.0)                 | 40 (19.4)                   | 46 (21.0)                            | 518 (21.9)               |
| ≥2 exacerbations  | 30 (4.6)                        | 42 (6.6)                        | 31 (4.8)                   | 9 (4.4)                     | 9 (4.1)                              | 121 (5.1)                |
| Number of exacerbations per patient   | 0.3±0.6                         | 0.4±0.7                         | 0.3±0.6                    | 0.3±0.6                     | 0.3±0.5                              | 0.3±0.6                  |
| <b>Duration of COPD<sup>##</sup> years</b>                                      | 7.6±6.1                         | 7.9±5.9                         | 7.7±5.5                    | 7.1±5.3                     | 8.4±6.8                              | 7.7±5.9                  |
| <b>Post-salbutamol FEV<sub>1</sub></b>  |                                 |                                 |                            |                             |                                      |                          |
| FEV <sub>1</sub> L  | 1.548±0.505                     | 1.532±0.488                     | 1.524±0.478                | 1.562±0.510                 | 1.557±0.472 <sup>¶¶</sup>            | 1.539±0.490 <sup>f</sup> |
| FEV <sub>1</sub> % pred   | 52.92±13.49                     | 53.07±12.82                     | 52.61±12.70                | 53.40±13.30                 | 53.04±12.79 <sup>¶¶</sup>            | 52.93±13.01 <sup>f</sup> |
| <b>FEV<sub>1</sub> reversibility post-salbutamol<sup>**</sup> %</b>             | 14.3±13.2                       | 14.3±13.5                       | 13.3±13.9                  | 13.5±13.4                   | 13.7±13.2 <sup>¶¶</sup>              | 13.9±13.5 <sup>f</sup>   |

Data are presented as mean±SD or n (%). BFF: budesonide/formoterol fumarate dihydrate; MDI: metered dose inhaler; FF: formoterol fumarate dihydrate; BD: budesonide; BUD/FORM DPI: budesonide/formoterol dry powder inhaler; BMI: body mass index; ICS: inhaled corticosteroid; CAT: COPD Assessment Test; COPD: chronic obstructive pulmonary disease; FEV<sub>1</sub>: forced expiratory volume in 1 s. <sup>#</sup>: age was at the time of informed consent; <sup>¶</sup>: number of pack-years smoked is (number of cigarettes per day/20)×number of years smoked; <sup>\*</sup>: the total CAT score was the sum of eight CAT item scores (range 0–40); <sup>§</sup>: n=643, one patient used a paper version of the CAT that was not entered into the database, that patient's CAT score was >10; <sup>f</sup>: n=2360; <sup>##</sup>: the duration of COPD was calculated relative to the start of study treatment at day 1; <sup>¶¶</sup>: n=218; <sup>\*\*</sup>: reversibility (%) is defined as 100×(the change from pre-salbutamol to post for FEV<sub>1</sub>)/pre-salbutamol FEV<sub>1</sub>.

## Results

### Study population

Overall, 4242 patients were screened, and 2389 patients were randomised. Of these, 2370 patients (99.2%) received treatment and 2057 (86.1%) completed 24 weeks of treatment. The mITT and safety populations included 2361 patients (98.8%) (figure 1).

Most patients in the mITT population were white (96.6%) and male (60.5%), with a mean±SD age of 64.3±7.7 years, smoking history of 44.9±23.0 pack-years and post-bronchodilator FEV<sub>1</sub> of 52.93±13.01% of predicted. Overall, 49.0% of patients were using ICS at screening; 72.9% of patients had no history of moderate/severe COPD exacerbations in the year prior to screening (table 1), and 90.0% of patients had ≤1 moderate/severe COPD exacerbation, not requiring hospitalisation. Per study design, 34.3% of patients had a baseline blood eosinophil count <150 cells per mm<sup>3</sup> and 65.7% of patients had a baseline eosinophil count ≥150 cells per mm<sup>3</sup> (table 1; supplementary figure S2). Demographic characteristics, including baseline eosinophil count and exacerbation history, were balanced across the treatment groups (table 1).

### Primary end-points

BFF MDI 320/10 µg statistically significantly improved change from baseline in morning pre-dose trough FEV<sub>1</sub> at week 24 compared with FF MDI (demonstrating the ICS effect; least squares mean (LSM) 39 mL; p=0.0018), whereas numerical improvements were observed for the comparison of BFF MDI 160/10 µg with FF MDI (LSM 20 mL; p=0.1132) (figure 2a; table 2). BFF MDI 320/10 µg and 160/10 µg statistically significantly improved FEV<sub>1</sub> AUC<sub>0–4</sub> at week 24 compared with BD MDI (demonstrating the LABA effect; LSM 173 mL and 157 mL, respectively; both p<0.0001) (figure 2b; table 2). Analyses of the two primary end-points at week 24 using the attributable estimand (an analysis that adjusts for the potential bias

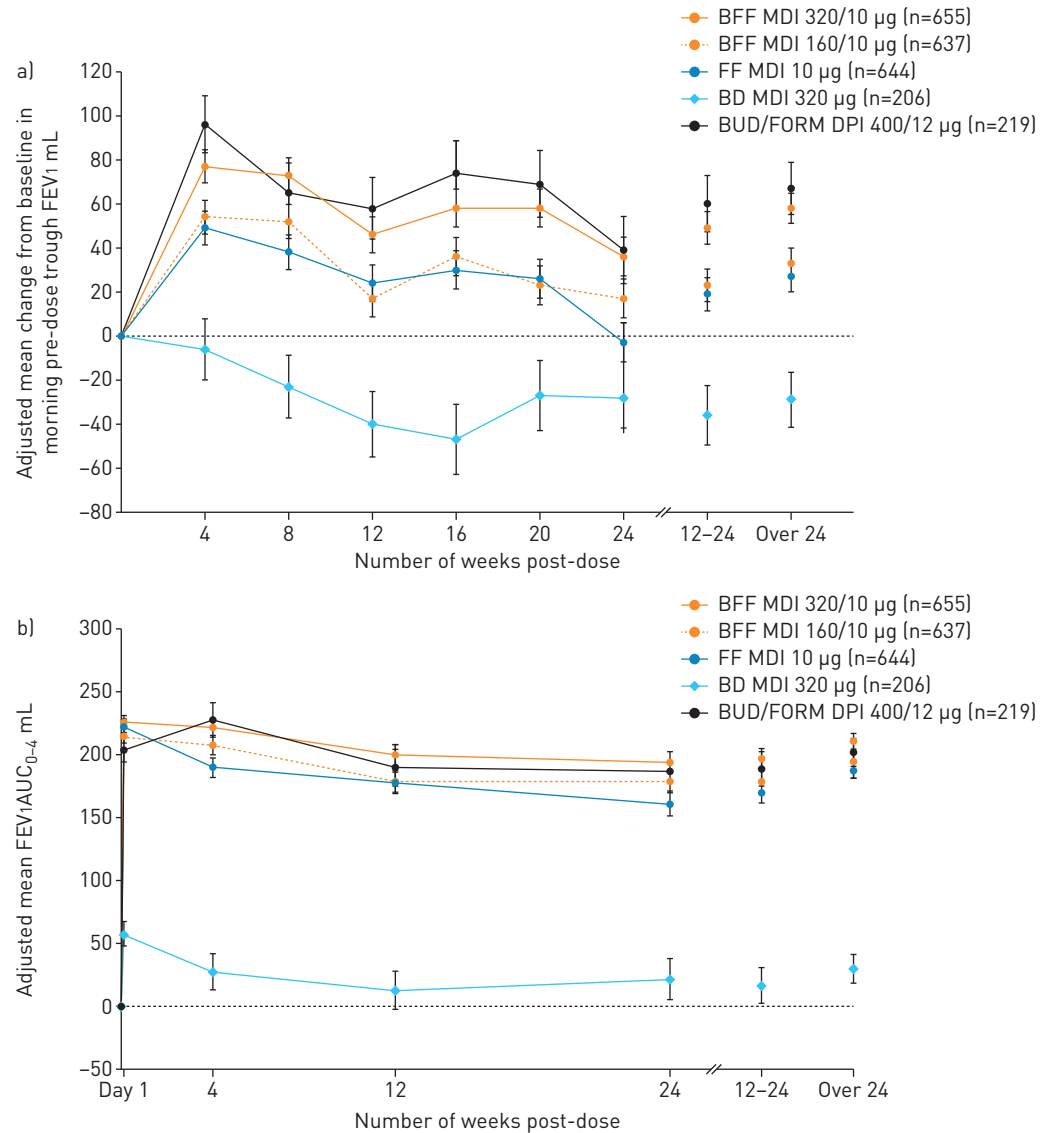


FIGURE 2 Primary efficacy end-points (efficacy estimand; modified intent-to-treat population). a) Adjusted mean change from baseline in morning pre-dose trough forced expiratory volume in 1 s (FEV<sub>1</sub>) over time. b) Adjusted mean change from baseline in FEV<sub>1</sub> area under the curve from 0–4 h [AUC<sub>0-4</sub>] over time. Data are presented as least squares means with standard errors. BD: budesonide; BFF: budesonide/formoterol fumarate dihydrate; BUD/FORM DPI: budesonide/formoterol dry powder inhaler; FF: formoterol fumarate dihydrate; MDI: metered dose inhaler.

introduced by data missing due to lack of efficacy or tolerability) were comparable with those using the efficacy estimand (table 2).

Results over 24 weeks were similar to those at week 24, and also showed that BFF MDI 320/10 µg was non-inferior to budesonide/formoterol DPI for the two EU primary end-points (supplementary table S2).

### Secondary lung function end-points

Both doses of BFF MDI nominally significantly improved morning pre-dose trough FEV<sub>1</sub> at week 24 *versus* BD MDI (figure 2a; table 2). BFF MDI 320/10 µg statistically significantly improved peak change from baseline in FEV<sub>1</sub> at week 24 *versus* BD MDI, with findings for BFF MDI 160/10 µg *versus* BD MDI reaching nominal significance (table 2). Onset of action for both doses of BFF MDI occurred within 5 min (table 2).

### Exacerbations

Overall, 16.9% of patients with BFF MDI 320/10 µg, 19.9% of patients with BFF MDI 160/10 µg, 23.3% of patients with FF MDI, 18.9% of patients with BD MDI, and 14.6% of patients with open-label

TABLE 2 Primary, secondary and other efficacy end-points (efficacy estimand, unless stated otherwise; modified intent-to-treat population)

|  | BFF MDI 320/10 µg (n=655)   |                                  | BFF MDI 160/10 µg (n=637)   |                                 |
|--|-----------------------------|----------------------------------|-----------------------------|---------------------------------|
|  | versus FF MDI 10 µg (n=644) | versus BD MDI 320 µg (n=206)     | versus FF MDI 10 µg (n=644) | versus BD MDI 320 µg (n=206)    |
| <b>Primary end-points</b>  |                             |                                  |                             |                                 |
| Change from baseline in morning pre-dose trough FEV <sub>1</sub> (mL) at week 24 (US approach) <sup>¶</sup>                        |                             |                                  |                             |                                 |
| LSM (95% CI)   | <b>39 (15, 64)</b>          | <b>65<sup>§§</sup> (29, 101)</b> | <b>20 (-5, 44)</b>          | <b>45<sup>§§</sup> (10, 81)</b> |
| p-value  | <b>0.0018*</b>              | <b>0.0004<sup>#</sup></b>        | <b>0.1132</b>               | <b>0.0131<sup>#</sup></b>       |
| Change from baseline in FEV <sub>1</sub> AUC <sub>0-4</sub> (mL) at week 24 (US approach) <sup>†</sup>                             |                             |                                  |                             |                                 |
| LSM (95% CI)   | 34 (8, 59)                  | <b>173 (136, 210)</b>            | 18 (-7, 44)                 | <b>157 (120, 194)</b>           |
| p-value  | 0.0092 <sup>#</sup>         | <b>&lt;0.0001*</b>               | 0.1621                      | <b>&lt;0.0001*</b>              |
| <b>Secondary end-points</b>  |                             |                                  |                             |                                 |
| Change from baseline in morning pre-dose trough FEV <sub>1</sub> (mL) at week 24 (US approach; attributable estimand) <sup>§</sup> |                             |                                  |                             |                                 |
| LSM (95% CI)   | <b>40 (15, 64)</b>          | 62 (27, 98)                      | <b>21 (-3, 46)</b>          | 44 (9, 80)                      |
| p-value  | <b>0.0016*</b>              | 0.0005 <sup>#</sup>              | <b>0.0885</b>               | 0.0150 <sup>#</sup>             |
| Change from baseline in FEV <sub>1</sub> AUC <sub>0-4</sub> (mL) at week 24 (US approach; attributable estimand) <sup>§</sup>      |                             |                                  |                             |                                 |
| LSM (95% CI)   | 37 (12, 62)                 | <b>167 (130, 203)</b>            | 19 (-6, 45)                 | <b>149 (112, 186)</b>           |
| p-value  | 0.0043 <sup>#</sup>         | <b>&lt;0.0001*</b>               | 0.1328                      | <b>&lt;0.0001<sup>#</sup></b>   |
| Peak change from baseline in FEV <sub>1</sub> (mL) post-dosing at week 24 (US approach) <sup>†</sup>                               |                             |                                  |                             |                                 |
| LSM (95% CI)   | 30 (3, 56)                  | <b>157 (118, 195)</b>            | 15 (-11, 42)                | <b>142 (103, 181)</b>           |
| p-value  | 0.0274 <sup>#</sup>         | <b>&lt;0.0001*</b>               | 0.2649                      | <b>&lt;0.0001<sup>#</sup></b>   |
| Time to first moderate/severe COPD exacerbation (US and EU approach)   |                             |                                  |                             |                                 |
| Hazard ratio (95% CI)  | <b>0.675 (0.528, 0.863)</b> | 0.806 (0.560, 1.162)             | <b>0.771 (0.608, 0.977)</b> | 0.921 (0.643, 1.319)            |
| p-value <sup>ff</sup>  | <b>0.0017*</b>              | 0.2484                           | <b>0.0310<sup>#</sup></b>   | 0.6535                          |
| Change from baseline in average daily salbutamol use (puffs per day) over 24 weeks (US and EU approach) <sup>f</sup>               |                             |                                  |                             |                                 |
| LSM (95% CI)   | -0.22 (-0.46, 0.01)         | <b>-0.70 (-1.04, -0.36)</b>      | -0.17 (-0.41, 0.06)         | <b>-0.65 (-0.99, -0.31)</b>     |
| p-value  | 0.0610                      | <b>&lt;0.0001*</b>               | 0.1535                      | <b>0.0002<sup>#</sup></b>       |
| Percentage of patients achieving an MCID of ≥4 units in SGRQ total score at week 24 (US approach) <sup>##</sup>                    |                             |                                  |                             |                                 |
| Difference (95% CI)  | <b>6.53 (0.99, 12.06)</b>   | <b>4.50 (-3.48, 12.47)</b>       | <b>5.63 (0.07, 11.19)</b>   | <b>3.60 (-4.39, 11.59)</b>      |
| p-value  | <b>0.0212*</b>              | <b>0.2713</b>                    | <b>0.0476<sup>#</sup></b>   | <b>0.3786</b>                   |
| Time to onset of action as assessed by FEV <sub>1</sub> (mL) on day 1 (US and EU approach) <sup>¶¶, **</sup>                       |                             |                                  |                             |                                 |
| Time   | NA                          | <b>5 min</b>                     | NA                          | <b>5 min</b>                    |
| LSM (95% CI)   | NA                          | <b>132 (113, 151)</b>            | NA                          | <b>126 (108, 145)</b>           |
| p-value  | NA                          | <b>&lt;0.0001*</b>               | NA                          | <b>&lt;0.0001<sup>#</sup></b>   |
| <b>Other end-points</b>  |                             |                                  |                             |                                 |
| Rate of moderate/severe COPD exacerbations (US and EU approach)  |                             |                                  |                             |                                 |
| Rate ratio (95% CI)  | 0.63 (0.49, 0.82)           | 0.68 (0.47, 0.99)                | 0.72 (0.56, 0.92)           | 0.77 (0.53, 1.11)               |
| p-value  | 0.0005 <sup>#</sup>         | 0.0433 <sup>#</sup>              | 0.0094 <sup>#</sup>         | 0.1634                          |

Pre-specified primary and secondary efficacy comparisons are set in bold italics. BFF: budesonide/formoterol fumarate dihydrate; MDI: metered dose inhaler; FF: formoterol fumarate dihydrate; BD: budesonide; FEV<sub>1</sub>: forced expiratory volume in 1 s; LSM: least squares mean; AUC<sub>0-4</sub>: area under the curve from 0 to 4 h; COPD: chronic obstructive pulmonary disease; MCID: minimal clinically important difference; SGRQ: St George's Respiratory Questionnaire; NA: not applicable. <sup>¶</sup>: BFF MDI 320/10 µg (n=571); BFF MDI 160/10 µg (n=564); FF MDI 10 µg (n=550); BD MDI 320 µg (n=168). <sup>\*</sup>: BFF MDI 320/10 µg (n=571); BFF MDI 160/10 µg (n=565); FF MDI 10 µg (n=549); BD MDI 320 µg (n=168). <sup>§</sup>: BFF MDI 320/10 µg (n=654); BFF MDI 160/10 µg (n=636); FF MDI 10 µg (n=643); BD MDI 320 µg (n=206). <sup>f</sup>: BFF MDI 320/10 µg (n=654); BFF MDI 160/10 µg (n=636); FF MDI 10 µg (n=641); BD MDI 320 µg (n=206). <sup>##</sup>: BFF MDI 320/10 µg (n=649); BFF MDI 160/10 µg (n=635); FF MDI 10 µg (n=640); BD MDI 320 µg (n=204). <sup>¶¶</sup>: the onset of action for BFF MDI was defined as the first time-point where the difference from BD MDI for change from baseline in FEV<sub>1</sub> was statistically significant. <sup>\*\*</sup>: BFF MDI 320/10 µg (n=535); BFF MDI 160/10 µg (n=536); BD MDI 320 µg (n=171). <sup>\*</sup>: statistically significant. <sup>#</sup>: nominally significant (p<0.05 but not statistically significant after type I error control or not included in type I error control). <sup>§§</sup>: pre-specified secondary end-point comparison. <sup>ff</sup>: p-values are "Cox-regression" p-values.

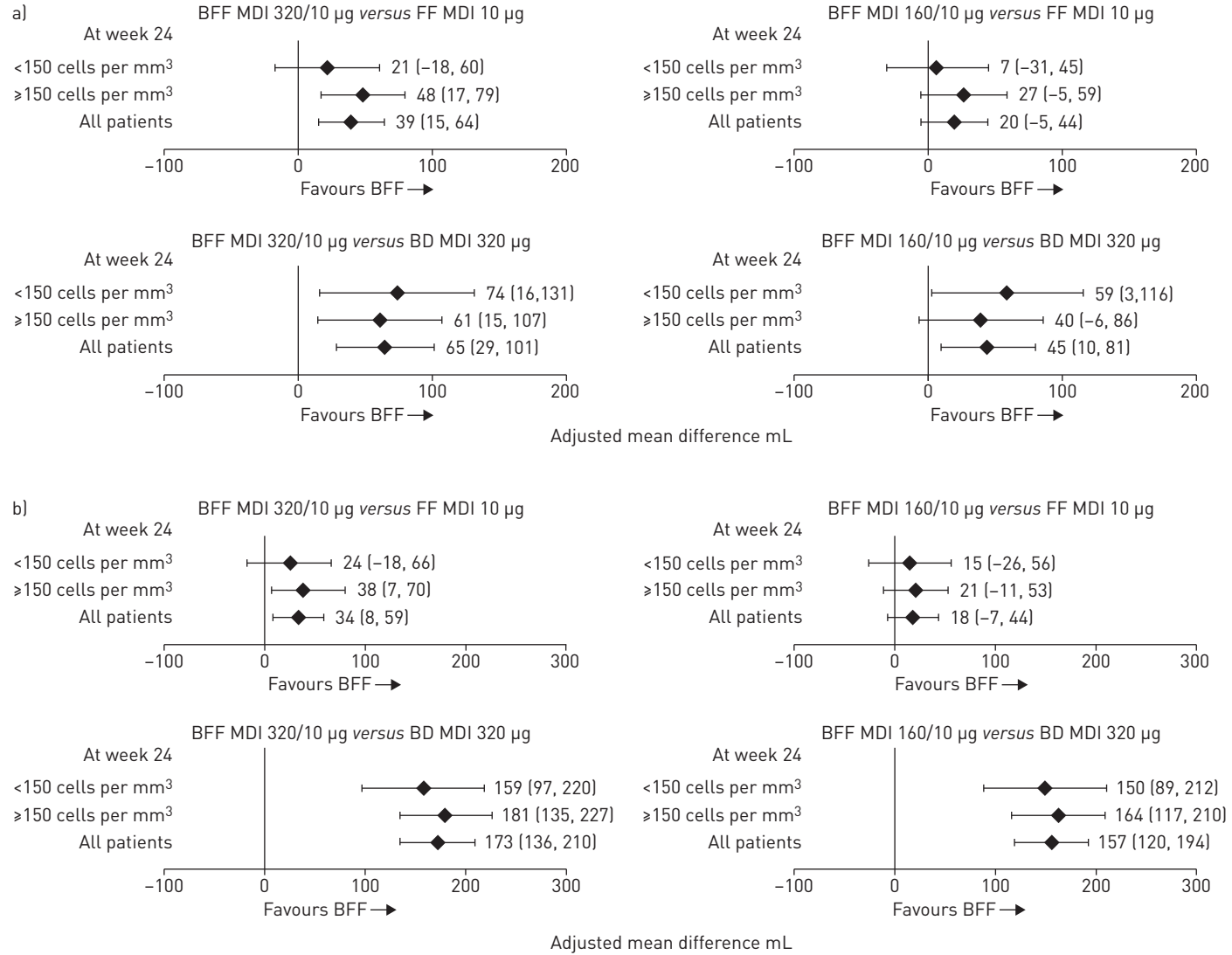


FIGURE 3 Forest plots of primary lung function end-points by baseline eosinophil count (efficacy estimand; modified intent-to-treat (mITT) population; US approach). a) Change from baseline in morning pre-dose trough forced expiratory volume in 1 s (FEV<sub>1</sub>) at week 24. b) Change from baseline in FEV<sub>1</sub> area under the curve from 0–4 h at week 24. Data are presented as least squares mean treatment differences with 95% confidence intervals. mITT population: <150 cells per mm<sup>3</sup>, n=810; ≥150 cells per mm<sup>3</sup>, n=1551; all patients, n=2361. BD: budesonide; BFF: budesonide/formoterol fumarate dihydrate; FF: formoterol fumarate dihydrate; MDI: metered dose inhaler.



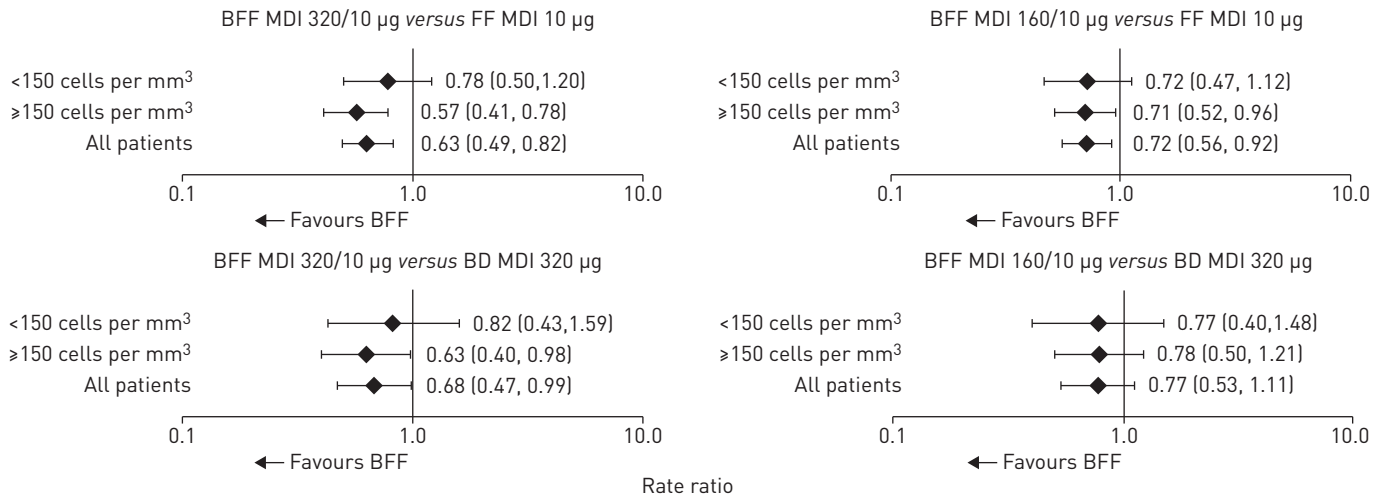


FIGURE 4 Forest plots of rate of moderate/severe chronic obstructive pulmonary disease exacerbations by baseline eosinophil count (efficacy estimand; modified intent-to-treat [mITT] population; US and EU approach). Data are presented as rate ratios with 95% confidence intervals. mITT population: <150 cells per mm<sup>3</sup>, n=810; ≥150 cells per mm<sup>3</sup>, n=1551; all patients, n=2361. BD: budesonide; BFF: budesonide/formoterol fumarate dihydrate; FF: formoterol fumarate dihydrate; MDI: metered dose inhaler.

budesonide/formoterol DPI experienced a moderate/severe COPD exacerbation. BFF MDI 320/10 µg statistically significantly improved time to first moderate/severe COPD exacerbations *versus* FF MDI (hazard ratio (HR) 0.675, 95% CI 0.528, 0.863; p=0.0017), with the comparison of BFF MDI 160/10 µg *versus* FF MDI showing nominal significance (HR 0.771, 95% CI 0.608, 0.977; p=0.0310) (table 2; supplementary figure S3). The adjusted rate of moderate/severe COPD exacerbations per year was 0.44 for BFF MDI 320/10 µg, 0.50 for BFF MDI 160/10 µg, 0.69 for FF MDI, 0.65 for BD MDI, and 0.32 for open-label budesonide/formoterol DPI. BFF MDI 320/10 µg and 160/10 µg nominally significantly reduced the rate of moderate/severe COPD exacerbations by 37% and 28% *versus* FF MDI, respectively (table 2).

#### Symptom end-points

BFF MDI 320/10 µg statistically significantly improved average daily rescue salbutamol use over 24 weeks *versus* BD MDI, and the SGRQ responder rates (improvement in SGRQ total score ≥4 units) at week 24 *versus* FF MDI (table 2).

#### Eosinophil subgroups

Treatment differences in change from baseline in morning pre-dose trough FEV<sub>1</sub> at week 24 between BFF MDI 320/10 µg and 160/10 µg and FF MDI were 48 mL (95% CI 17, 79 mL) and 27 mL (95% CI -5, 59 mL), respectively, in the ≥150 cells per mm<sup>3</sup> subgroup, and 21 mL (95% CI -18, 60 mL) and 7 mL (95% CI -31, 45 mL), respectively, in the <150 cells per mm<sup>3</sup> subgroup. Comparisons of BFF MDI *versus* BD MDI did not show a greater treatment difference in the ≥150 cells per mm<sup>3</sup> subgroup (figure 3a). Treatment differences in change from baseline in FEV<sub>1</sub> AUC<sub>0-4</sub> at week 24 between BFF MDI (both doses) and both monocomponents were comparable in both eosinophil subgroups (figure 3b).

Improvements in the rate of moderate/severe COPD exacerbations for BFF MDI 320/10 µg and 160/10 µg *versus* both monocomponents were observed in both eosinophil subgroups. The rate ratio for BFF MDI 320/10 µg *versus* FF MDI and BD MDI was 0.57 (95% CI 0.41, 0.78) and 0.63 (95% CI 0.40, 0.98), respectively, for the ≥150 cells per mm<sup>3</sup> subgroup, and 0.78 (95% CI 0.50, 1.20) and 0.82 (95% CI 0.43, 1.59), respectively, for the <150 cells per mm<sup>3</sup> subgroup, with little difference between the eosinophil subgroups with BFF MDI 160/10 µg (figure 4).

#### Safety

The incidence of treatment-emergent adverse events (TEAEs) or TEAEs leading to study drug discontinuation was generally similar across treatment groups, with the incidence of serious TEAEs somewhat higher in the FF MDI group than in the BD MDI and BFF MDI groups (tables 3 and 4). The incidence of adjudicated pneumonia was low in all treatment groups, with an incidence of 0.5% with BD MDI, 0.8% with BFF MDI 320/10 µg, 1.1% with BFF MDI 160/10 µg and 1.4% with FF MDI and budesonide/formoterol DPI, with no dose response observed for BFF MDI (table 3). There were a total of

TABLE 3 Summary of treatment-emergent adverse events (TEAEs) (safety population)

| Summary of TEAEs                                | BFF MDI<br>320/10 µg<br>(n=655) | BFF MDI<br>160/10 µg<br>(n=637) | FF MDI<br>10 µg<br>(n=644) | BD MDI<br>320 µg<br>(n=206) | BUD/FORM DPI<br>400/12 µg<br>(n=219) | All patients<br>(n=2361) |
|---|---------------------------------|---------------------------------|----------------------------|-----------------------------|--------------------------------------|--------------------------|
| <b>At least one TEAE</b>                        | 333 [50.8]; 788                 | 318 [49.9]; 727                 | 324 [50.3]; 805            | 107 [51.9]; 259             | 114 [52.1]; 270                      | 1196 [50.7]; 2849        |
| <b>Treatment-related TEAEs</b>                  | 57 (8.7); 77                    | 52 (8.2); 63                    | 26 (4.0); 33               | 17 (8.3); 27                | 13 (5.9); 15                         | 165 (7.0); 215           |
| <b>SAEs</b>                                     | 42 (6.4); 53                    | 45 (7.1); 56                    | 72 (11.2); 102             | 15 (7.3); 18                | 20 (9.1); 27                         | 194 (8.2); 256           |
| <b>Treatment-related serious TEAEs</b>          | 2 (0.3); 3                      | 3 (0.5); 3                      | 0                          | 0                           | 0                                    | 5 (0.2); 6               |
| <b>TEAEs leading to early discontinuation</b>   | 28 (4.3); 34                    | 23 (3.6); 34                    | 17 (2.6); 18               | 12 (5.8); 17                | 12 (5.5); 16                         | 92 (3.9); 119            |
| <b>SAEs leading to early discontinuation</b>    | 11 (1.7); 11                    | 8 (1.3); 9                      | 8 (1.2); 8                 | 3 (1.5); 3                  | 5 (2.3); 7                           | 35 (1.5); 38             |
| <b>Deaths (all causes)</b>                      |                                 |                                 |                            |                             |                                      |                          |
| On-treatment                                    | 3 (0.5); 3                      | 2 (0.3); 2                      | 2 (0.3); 2                 | 0                           | 2 (0.9); 2                           | 9 (0.4); 9               |
| Post-treatment                                  | 1 (0.2); 1                      | 0                               | 1 (0.2); 1                 | 0                           | 1 (0.5); 1                           | 3 (0.1); 3               |
| <b>SAE of pneumonia<sup>#</sup></b>             | 4 (0.6); 4                      | 5 (0.8); 5                      | 6 (0.9); 7                 | 0                           | 3 (1.4); 13                          | 18 (0.8); 19             |
| <b>Confirmed pneumonia as determined by CEC</b> | 5 (0.8); 5                      | 7 (1.1); 7                      | 9 (1.4); 10                | 1 (0.5); 1                  | 3 (1.4); 3                           | 25 (1.1); 26             |
| <b>Confirmed MACE as determined by CEC</b>      | 3 (0.5); 3                      | 5 (0.8); 5                      | 6 (0.9); 6                 | 1 (0.5); 1                  | 2 (0.9); 2                           | 17 (0.7); 17             |

Data are presented as n (%); number of events. BFF: budesonide/formoterol fumarate dihydrate; MDI: metered dose inhaler; FF: formoterol fumarate dihydrate; BD: budesonide; BUD/FORM DPI: budesonide/formoterol dry powder inhaler; SAE: serious adverse event; CEC: clinical end-point committee; MACE: major adverse cardiovascular event. <sup>#</sup>: not CEC confirmed.

12 deaths during the study (on-treatment and post-treatment), with an incidence ranging from 0–1.4% across treatment groups, none of which were considered treatment-related (table 3).

### Discussion

This study in symptomatic patients (CAT score  $\geq 10$ ) with moderate to very severe COPD showed that treatment with BFF MDI 320/10 µg resulted in significant improvements for all pre-specified primary and secondary efficacy comparisons for the US statistical approach, with the exception of SGRQ responder rates at week 24 *versus* BD MDI, which showed numerical improvements. While improvements were also observed with BFF MDI 160/10 µg, the primary comparison for morning trough FEV<sub>1</sub> *versus* FF MDI did not reach statistical significance. A dose response favouring BFF MDI 320/10 µg was observed for all lung function and exacerbation end-points.

Our study also demonstrated non-inferiority of BFF MDI 320/10 µg, formulated using co-suspension delivery technology, compared to the approved budesonide/formoterol DPI formulation [20]. Choosing an

TABLE 4 Treatment-emergent adverse events (TEAEs) occurring in  $\geq 2\%$  of patients in any treatment group (safety population)

| TEAEs                                    | BFF MDI<br>320/10 µg<br>(n=655) | BFF MDI<br>160/10 µg<br>(n=637) | FF MDI<br>10 µg<br>(n=644) | BD MDI<br>320 µg<br>(n=206) | BUD/FORM DPI<br>400/12 µg<br>(n=219) | All patients<br>(n=2361) |
|--|---------------------------------|---------------------------------|----------------------------|-----------------------------|--------------------------------------|--------------------------|
| <b>Nasopharyngitis</b>                   | 40 (6.1)                        | 40 (6.3)                        | 43 (6.7)                   | 17 (8.3)                    | 14 (6.4)                             | 154 (6.5)                |
| <b>Upper respiratory tract infection</b> | 25 (3.8)                        | 21 (3.3)                        | 20 (3.1)                   | 5 (2.4)                     | 3 (1.4)                              | 74 (3.1)                 |
| <b>COPD</b>                              | 16 (2.4)                        | 10 (1.6)                        | 30 (4.7)                   | 2 (1.0)                     | 6 (2.7)                              | 64 (2.7)                 |
| <b>Hypertension</b>                      | 14 (2.1)                        | 22 (3.5)                        | 15 (2.3)                   | 5 (2.4)                     | 4 (1.8)                              | 60 (2.5)                 |
| <b>Back pain</b>                         | 18 (2.7)                        | 13 (2.0)                        | 18 (2.8)                   | 3 (1.5)                     | 2 (0.9)                              | 54 (2.3)                 |
| <b>Headache</b>                          | 19 (2.9)                        | 8 (1.3)                         | 15 (2.3)                   | 3 (1.5)                     | 1 (0.5)                              | 46 (1.9)                 |
| <b>Cough</b>                             | 7 (1.1)                         | 15 (2.4)                        | 15 (2.3)                   | 7 (3.4)                     | 0                                    | 44 (1.9)                 |
| <b>Dyspnoea</b>                          | 12 (1.8)                        | 11 (1.7)                        | 9 (1.4)                    | 7 (3.4)                     | 3 (1.4)                              | 42 (1.8)                 |
| <b>Oral candidiasis</b>                  | 17 (2.6)                        | 14 (2.2)                        | 5 (0.8)                    | 3 (1.5)                     | 3 (1.4)                              | 42 (1.8)                 |
| <b>Bronchitis</b>                        | 16 (2.4)                        | 7 (1.1)                         | 10 (1.6)                   | 4 (1.9)                     | 2 (0.9)                              | 39 (1.7)                 |
| <b>Sinusitis</b>                         | 10 (1.5)                        | 9 (1.4)                         | 12 (1.9)                   | 2 (1.0)                     | 5 (2.3)                              | 38 (1.6)                 |
| <b>Diarrhoea</b>                         | 9 (1.4)                         | 9 (1.4)                         | 9 (1.4)                    | 5 (2.4)                     | 3 (1.4)                              | 35 (1.5)                 |
| <b>Dysphonia</b>                         | 16 (2.4)                        | 13 (2.0)                        | 3 (0.5)                    | 2 (1.0)                     | 1 (0.5)                              | 35 (1.5)                 |
| <b>Muscle spasms</b>                     | 14 (2.1)                        | 6 (0.9)                         | 6 (0.9)                    | 0                           | 8 (3.7)                              | 34 (1.4)                 |
| <b>Anxiety</b>                           | 6 (0.9)                         | 2 (0.3)                         | 4 (0.6)                    | 5 (2.4)                     | 1 (0.5)                              | 18 (0.8)                 |
| <b>Fatigue</b>                           | 1 (0.2)                         | 1 (0.2)                         | 5 (0.8)                    | 5 (2.4)                     | 1 (0.5)                              | 13 (0.6)                 |

Data are presented as n (%). BFF: budesonide/formoterol fumarate dihydrate; MDI: metered dose inhaler; FF: formoterol fumarate dihydrate; BD: budesonide; BUD/FORM DPI: budesonide/formoterol dry powder inhaler; COPD: chronic obstructive pulmonary disease.

appropriate inhaled drug delivery device for a patient depends on several factors, with each device having its own advantages and challenges. To effectively use a DPI, patients with COPD must be able to generate a sufficient peak inspiratory flow rate to allow the therapy to be inhaled and deposited in the lower respiratory tract [21]. Therefore, an MDI device may be preferable in patients with an inspiratory flow rate that is suboptimal for a DPI. Furthermore, rescue medications are commonly available in MDI devices, and patients with COPD who used multiple devices had more favourable clinical outcomes if these required similar inhalation techniques rather than different techniques [22].

The improvement in change from baseline in morning pre-dose trough FEV<sub>1</sub> at week 24 for BFF MDI 320/10 µg *versus* FF MDI (39 mL) was consistent with the magnitude of improvements observed for approved budesonide/formoterol formulations compared with formoterol alone in 6-month and 12-month studies [4, 8, 23], and also with 6-month studies comparing the ICS/LABA combination fluticasone furoate/vilanterol with vilanterol alone [24, 25].

Overall, adding an ICS to a LABA would be expected to have a greater impact on exacerbations than on lung function outcomes. A recent systematic review reported that patients rate a reduction in exacerbations or hospitalisation due to exacerbations as the most important clinical outcome from COPD therapy [26]. The potential influence of the study design on exacerbation rates is important to consider when interpreting data from trials such as this, and also IMPACT, for which it has been suggested that ICS withdrawal at the end of the screening period could influence the exacerbation rates reported [27]. However, in our study, the time to first moderate/severe COPD exacerbation data showed a cumulative incidence of exacerbations for all therapies that diverged over time, not only in the first 4 weeks (supplementary figure S3), indicating that findings were not only driven by ICS withdrawal after randomisation. Furthermore, it is interesting to note that both doses of BFF MDI improved exacerbation outcomes *versus* FF MDI despite the study population not being enriched for patients with a history of exacerbations; the majority (73%) had zero exacerbations and 22% had one exacerbation in the prior year. This suggests that ICS/LABA therapy may provide additional benefits compared to LABA monotherapy for some patients with COPD, independent of their recent exacerbation history.

It has been proposed that individualised treatment based on a patient's blood eosinophil levels, along with other respiratory criteria, may be possible [28]. We used baseline blood eosinophil levels of <150 cells per mm<sup>3</sup> and ≥150 cells per mm<sup>3</sup> to prospectively explore the relationship between eosinophils and improvements in lung function and reductions in COPD exacerbations. Whether a simple threshold may ultimately be used clinically for stratifying patient treatment remains uncertain. However, our study showed trends towards greater lung function and exacerbation benefits in patients with higher blood eosinophil levels, which is consistent with previous studies [12–14, 29]. Further studies are required to determine if blood eosinophil levels can predict treatment responses, and at which thresholds.

While there was a dose response for efficacy with BFF MDI, there was no evidence for a dose response for safety. Importantly, the incidence of adjudicated pneumonia was low among all treatment groups (0.5–1.4%), with the lowest incidences observed with BFF MDI 320/10 µg and BD MDI. The safety profile of BFF MDI was generally similar to that of budesonide/formoterol DPI 400/12 µg, a product with a well-established safety profile [20].

A limitation of this study was the 6-month treatment period, which may not be considered an optimal duration for a study investigating exacerbation rates. However, all four seasons were well represented during the treatment period since the study enrolled patients over 1 year, and the secondary end-point of time to first moderate/severe COPD exacerbation does not require a study to be of a particular duration, since only the first exacerbation is used in the analysis. This end-point showed significant improvements for the comparison of BFF MDI *versus* FF MDI that were also dose-dependent. In addition, a 6-month treatment period can reduce patient dropout compared to a longer study duration, which may result in the underestimation of exacerbation rates. Notably, the 6-month RISE study, which evaluated a different formulation of budesonide/formoterol MDI, had a primary end-point of the annual rate of COPD exacerbations, and showed comparable results to our study [8]. The lack of patients with asthma–COPD overlap syndrome could be considered a potential limitation of this study, as patients with a current diagnosis of asthma were excluded. However, focusing on patients with COPD ensured that the impact of ICS shown in this study was not due to the effects of ICS in patients with asthma.

### Conclusions

Overall, the study demonstrated that BFF MDI 320/10 µg and 160/10 µg effectively improved lung function relative to ICS monotherapy and reduced COPD exacerbations relative to LABA monotherapy in patients with moderate to very severe COPD. A dose response favouring BFF MDI 320/10 µg was observed for all lung function and exacerbation end-points *versus* both monocomponents. However, there was no

dose response observed for safety outcomes, including for pneumonia which had a lower incidence for BFF MDI 320/10 µg relative to BFF MDI 160/10 µg. Finally, consistent with previous studies, there was a relationship between eosinophil levels and improvements in lung function and exacerbation rates, with greater improvements generally observed with BFF MDI relative to FF MDI in patients with baseline blood eosinophil levels  $\geq 150$  cells per  $\text{mm}^3$ .

**Acknowledgements:** The authors would like to thank all of the patients and their families and the team of investigators, research nurses, and operations staff involved in these studies. Medical writing support, under the direction of the authors, was provided by Pauline Craig of CMC CONNECT, a division of Complete Medical Communications Ltd, Glasgow, UK, which was funded by AstraZeneca, Cambridge, UK in accordance with Good Publication Practice (GPP3) guidelines [30].

**Author contributions:** C. Cappelletti, E.A. Duncan, G.T. Ferguson, J. Nyberg and P. Dorinsky made substantial contributions to the conception and design of the work. E.M. Kerwin and G.T. Ferguson made substantial contributions to the acquisition of data. A. Anzueto, A. Papi, C. Cappelletti, E.A. Duncan, E.M. Kerwin, G.T. Ferguson, J. Nyberg and P. Dorinsky made substantial contributions to the analysis of data. A. Anzueto, A. Papi, C. Cappelletti, E.A. Duncan, E.M. Kerwin, G.T. Ferguson, J. Nyberg and P. Dorinsky made substantial contributions to the interpretation of data. All authors were involved in the preparation and review of the manuscript, approved the final version to be submitted and agree to be accountable for all aspects of the work, in ensuring that questions related to the accuracy or integrity of any part of the work are appropriately investigated and resolved.

**Conflict of interest:** G.T. Ferguson reports grants, personal fees and non-financial support from AstraZeneca, during the conduct of the study; and grants, personal fees and non-financial support from Boehringer Ingelheim, Novartis, AstraZeneca, Pearl (a member of the AstraZeneca Group) and Sunovion, grants and personal fees from Theravance, and personal fees from Verona, Mylan, Innoviva, GlaxoSmithKline and Circassia, outside the submitted work. A. Papi reports board membership, consultancy, payment for lectures, grants for research and travel expenses reimbursement from Chiesi, AstraZeneca, GlaxoSmithKline, Boehringer Ingelheim, Mundipharma and TEVA, payment for lectures and travel expenses reimbursement from Menarini, Novartis and Zambon, board membership, payment for lectures, grants for research and travel expenses reimbursement from Pfizer, and grants for research from Sanofi, outside the submitted work. A. Anzueto reports institutional grants from GSK, and personal fees for consultancy from GSK, AstraZeneca, Novartis and BI, outside the submitted work. E.M. Kerwin is an employee of Crisor LLC Research, has served on advisory boards, speaker panels, or received travel reimbursement from Novartis, AstraZeneca, Amphastar, Forest, Pearl (a member of the AstraZeneca Group), Sunovion, Teva and Theravance, has served on a medical advisory board for Mylan, and has undertaken consultancy for GSK, outside the submitted work. C. Cappelletti is a full-time employee of Pearl (a member of the AstraZeneca Group). E.A. Duncan is a full-time employee of Pearl (a member of the AstraZeneca Group). J. Nyberg is a full-time employee of Pearl (a member of the AstraZeneca Group). P. Dorinsky is a full-time employee of Pearl (a member of the AstraZeneca Group).

**Support statement:** This study was supported by Pearl – a member of the AstraZeneca Group. The funder of the study was involved in study design, data collection, data analysis, data interpretation and writing of the report. Funding information for this article has been deposited with the Crossref Funder Registry.

## References

- 1 Vogelmeier CF, Criner GJ, Martinez FJ, *et al.* Global strategy for the diagnosis, management, and prevention of chronic obstructive lung disease 2017 report: GOLD executive summary. *Eur Respir J* 2017; 49: 1700214.
- 2 Calverley PMA, Anderson JA, Celli B, *et al.* Salmeterol and fluticasone propionate and survival in chronic obstructive pulmonary disease. *N Engl J Med* 2007; 356: 775–789.
- 3 Ferguson GT, Anzueto A, Fei R, *et al.* Effect of fluticasone propionate/salmeterol (250/50 µg) or salmeterol (50 µg) on COPD exacerbations. *Respir Med* 2008; 102: 1099–1108.
- 4 Rennard SI, Tashkin DP, McElhattan J, *et al.* Efficacy and tolerability of budesonide/formoterol in one hydrofluoroalkane pressurized metered-dose inhaler in patients with chronic obstructive pulmonary disease: results from a 1-year randomized controlled clinical trial. *Drugs* 2009; 69: 549–565.
- 5 Sharafkhaneh A, Southard JG, Goldman M, *et al.* Effect of budesonide/formoterol pMDI on COPD exacerbations: a double-blind, randomized study. *Respir Med* 2012; 106: 257–268.
- 6 Anzueto A, Ferguson GT, Feldman G, *et al.* Effect of fluticasone propionate/salmeterol (250/50) on COPD exacerbations and impact on patient outcomes. *COPD* 2009; 6: 320–329.
- 7 Jenkins CR, Jones PW, Calverley PMA, *et al.* Efficacy of salmeterol/fluticasone propionate by GOLD stage of chronic obstructive pulmonary disease: analysis from the randomised, placebo-controlled TORCH study. *Respir Res* 2009; 10: 59.
- 8 Ferguson GT, Tashkin DP, Skärby T, *et al.* Effect of budesonide/formoterol pressurized metered-dose inhaler on exacerbations *versus* formoterol in chronic obstructive pulmonary disease: the 6-month, randomized RISE (Revealing the Impact of Symbicort in reducing Exacerbations in COPD) study. *Respir Med* 2017; 132: 31–41.
- 9 Zhong N, Zheng J, Wen F, *et al.* Efficacy and safety of budesonide/formoterol *via* a dry powder inhaler in Chinese patients with chronic obstructive pulmonary disease. *Curr Med Res Opin* 2012; 28: 257–265.
- 10 Fukuchi Y, Samoro R, Fassakhov R, *et al.* Budesonide/formoterol *via* Turbuhaler® *versus* formoterol *via* Turbuhaler® in patients with moderate to severe chronic obstructive pulmonary disease: phase III multinational study results. *Respirology* 2013; 18: 866–873.
- 11 Szafranski W, Cukier A, Ramirez A, *et al.* Efficacy and safety of budesonide/formoterol in the management of chronic obstructive pulmonary disease. *Eur Respir J* 2003; 21: 74–81.
- 12 Pascoe S, Locantore N, Dransfield MT, *et al.* Blood eosinophil counts, exacerbations, and response to the addition of inhaled fluticasone furoate to vilanterol in patients with chronic obstructive pulmonary disease: a secondary analysis of data from two parallel randomised controlled trials. *Lancet Respir Med* 2015; 3: 435–442.

- 13 Watz H, Tetzlaff K, Wouters EFM, *et al.* Blood eosinophil count and exacerbations in severe chronic obstructive pulmonary disease after withdrawal of inhaled corticosteroids: a post-hoc analysis of the WISDOM trial. *Lancet Respir Med* 2016; 4: 390–398.
- 14 Bafadhel M, Peterson S, De Blas MA, *et al.* Predictors of exacerbation risk and response to budesonide in patients with chronic obstructive pulmonary disease: a post-hoc analysis of three randomised trials. *Lancet Respir Med* 2018; 6: 117–126.
- 15 Doty A, Schroeder J, Vang K, *et al.* Drug delivery from an innovative LAMA/LABA co-suspension delivery technology fixed-dose combination MDI: evidence of consistency, robustness, and reliability. *AAPS PharmSciTech* 2018; 19: 837–844.
- 16 Vehring R, Lechuga-Ballesteros D, Joshi V, *et al.* Cosuspensions of microcrystals and engineered microparticles for uniform and efficient delivery of respiratory therapeutics from pressurized metered dose inhalers. *Langmuir* 2012; 28: 15015–15023.
- 17 Taylor G, Warren S, Dwivedi S, *et al.* Gamma scintigraphic pulmonary deposition study of glycopyrronium/formoterol metered dose inhaler formulated using co-suspension delivery technology. *Eur J Pharm Sci* 2018; 111: 450–457.
- 18 Kerwin EM, Siler TM, Arora S, *et al.* Efficacy, safety, and pharmacokinetics of budesonide/formoterol fumarate delivered *via* metered dose inhaler using innovative co-suspension delivery technology in patients with moderate-to-severe COPD. *Int J Chron Obstruct Pulmon Dis* 2018; 13: 1483–1494.
- 19 Celli BR, MacNee W. Standards for the diagnosis and treatment of patients with COPD: a summary of the ATS/ERS position paper. *Eur Respir J* 2004; 23: 932–946.
- 20 AstraZeneca UK Limited. Symbicort® Turbohaler® 200/6 Inhalation Powder: Summary of Product Characteristics. [www.medicines.org.uk/emc/medicine/4821](http://www.medicines.org.uk/emc/medicine/4821). Date last updated: April 27 2018. Date last accessed: June 21 2018.
- 21 Mahler DA. Peak inspiratory flow rate as a criterion for dry powder inhaler use in chronic obstructive pulmonary disease. *Ann Am Thorac Soc* 2017; 14: 1103–1107.
- 22 Bosnic-Anticevich S, Chrystyn H, Costello RW, *et al.* The use of multiple respiratory inhalers requiring different inhalation techniques has an adverse effect on COPD outcomes. *Int J Chron Obstruct Pulmon Dis* 2017; 12: 59–71.
- 23 Tashkin DP, Rennard SI, Martin P, *et al.* Efficacy and safety of budesonide and formoterol in one pressurized metered-dose inhaler in patients with moderate to very severe chronic obstructive pulmonary disease: results of a 6-month randomized clinical trial. *Drugs* 2008; 68: 1975–2000.
- 24 Kerwin EM, Scott-Wilson C, Sanford L, *et al.* A randomised trial of fluticasone furoate/vilanterol (50/25 µg; 100/25 µg) on lung function in COPD. *Respir Med* 2013; 107: 560–569.
- 25 Martinez FJ, Boscia J, Feldman G, *et al.* Fluticasone furoate/vilanterol (100/25; 200/25 µg) improves lung function in COPD: a randomised trial. *Respir Med* 2013; 107: 550–559.
- 26 Zhang Y, Morgan RL, Alonso-Coello P, *et al.* A systematic review of how patients value COPD outcomes. *Eur Respir J* 2018; 52: 1800222.
- 27 Suissa S, Drazen JM. Making sense of triple inhaled therapy for COPD. *N Engl J Med* 2018; 378: 1723–1724.
- 28 Agustí A, Bafadhel M, Beasley R, *et al.* Pavord ID, on behalf of all participants in the seminar. Precision medicine in airway diseases: moving to clinical practice. *Eur Respir J* 2017; 50: 1701655.
- 29 Lipson DA, Barnhart F, Brealey N, *et al.* Once-daily single-inhaler triple versus dual therapy in patients with COPD. *N Engl J Med* 2018; 378: 1671–1680.
- 30 Battisti WP, Wager E, Baltzer L, *et al.* Good publication practice for communicating company-sponsored medical research: GPP3. *Ann Intern Med* 2015; 163: 461–464.