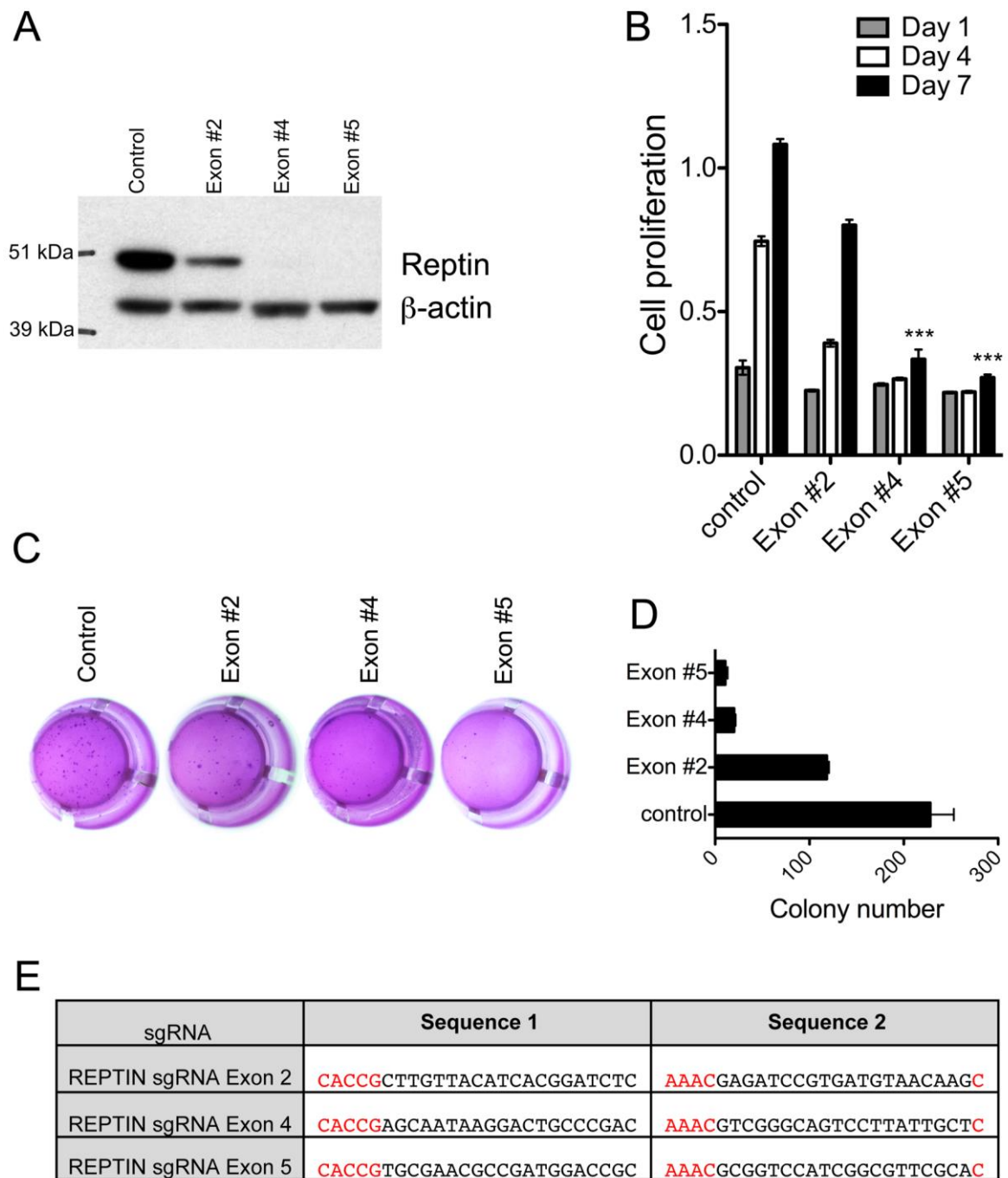


Figure S2



Supplementary Fig. S2: Knock down of Reptin suppresses clonal expansion and proliferation of human NSCLC cells *ex vivo*. **S2A**, efficacious CRISPR-Cas9 system mediated knock down/knock out of Reptin in human non-SCC A549 NSCLC cells using 3 different sgRNAs targeting the indicated exons and as compared to scramble control as assessed via immunoblotting. Total amount of protein was measured by β -actin. **S2B-S2D**, knock down of Reptin induces significant reduction of proliferation (**S2B**) and colony numbers (**S2C**, **S2D**) of human A549 lung cancer cells as assessed via MTS-assay and colony formation assay in methylcellulose respectively and as compared to scramble controls. Error bars represent SD of three independent experiments. **S2E**, sequences of small guide (sg) RNAs used for CRISPR-Cas9 system mediated knock down of Reptin in human NSCLC cells.