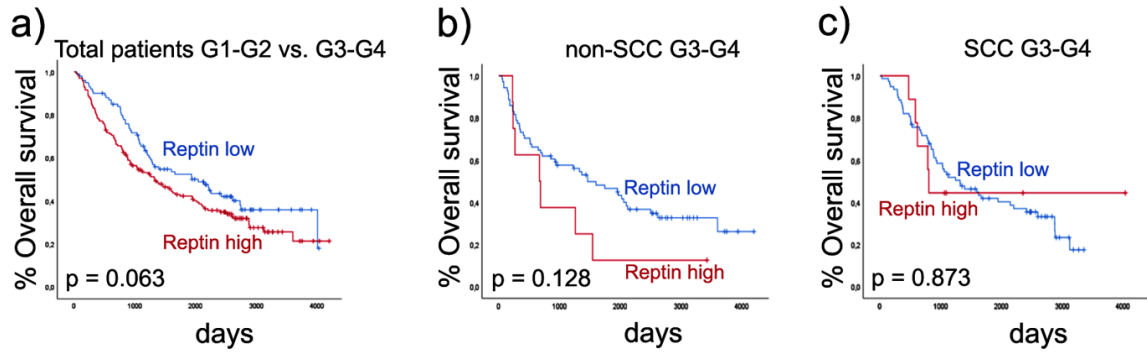


Supplementary Fig. S1



Supplementary Fig. S1: Prognostic values of tumor grade and expression of Reptin in NSCLC patients. **S1A**, overall survival of NSCLC patients with highly differentiated (G1-2) as compared to poorly differentiated (G3-4) tumors, **S1B** and **S1C**, overall survival of non-SCC (**S1B**) and SCC (**S1C**) NSCLC patients with G3-4 tumors and with high (red) versus low (blue) expression of Reptin. Unpaired T-test was used to determine statistical significance in the immunoblots bar charts.