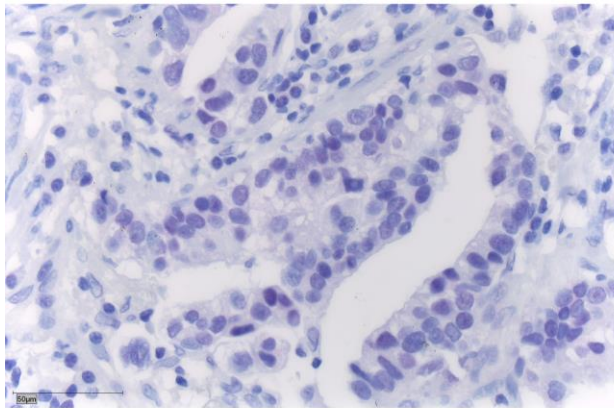
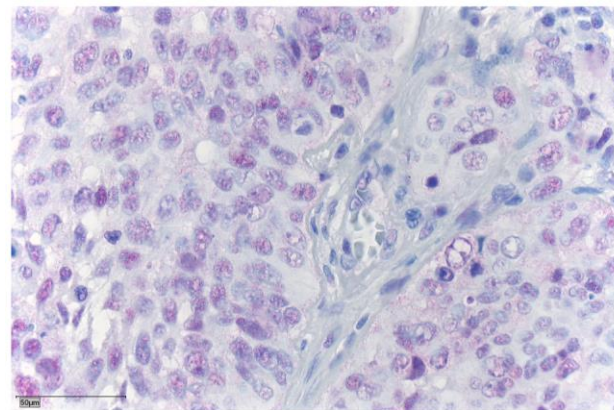


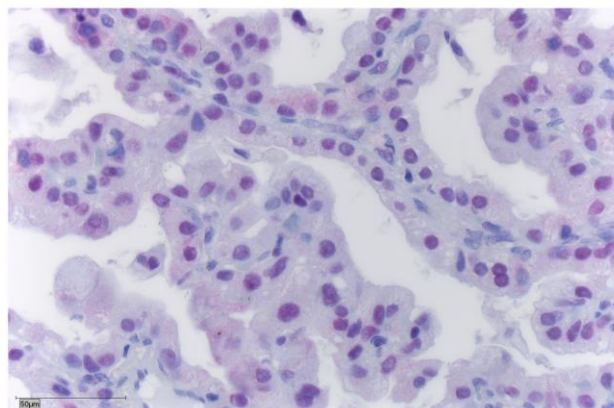
score 0



score 1



score 2



score 3

Supplementary methods: Semi-quantitative immunohistochemical assessment was performed applying a modified H-score essentially based on the parameters proposed by Harvey et al. (1999). Establishing a reference framework for the analysis, prototypical examples of four different staining intensities (0, none; 1, weak, 2, moderate; and 3, high). Examples representing each of the four staining intensities are displayed above.