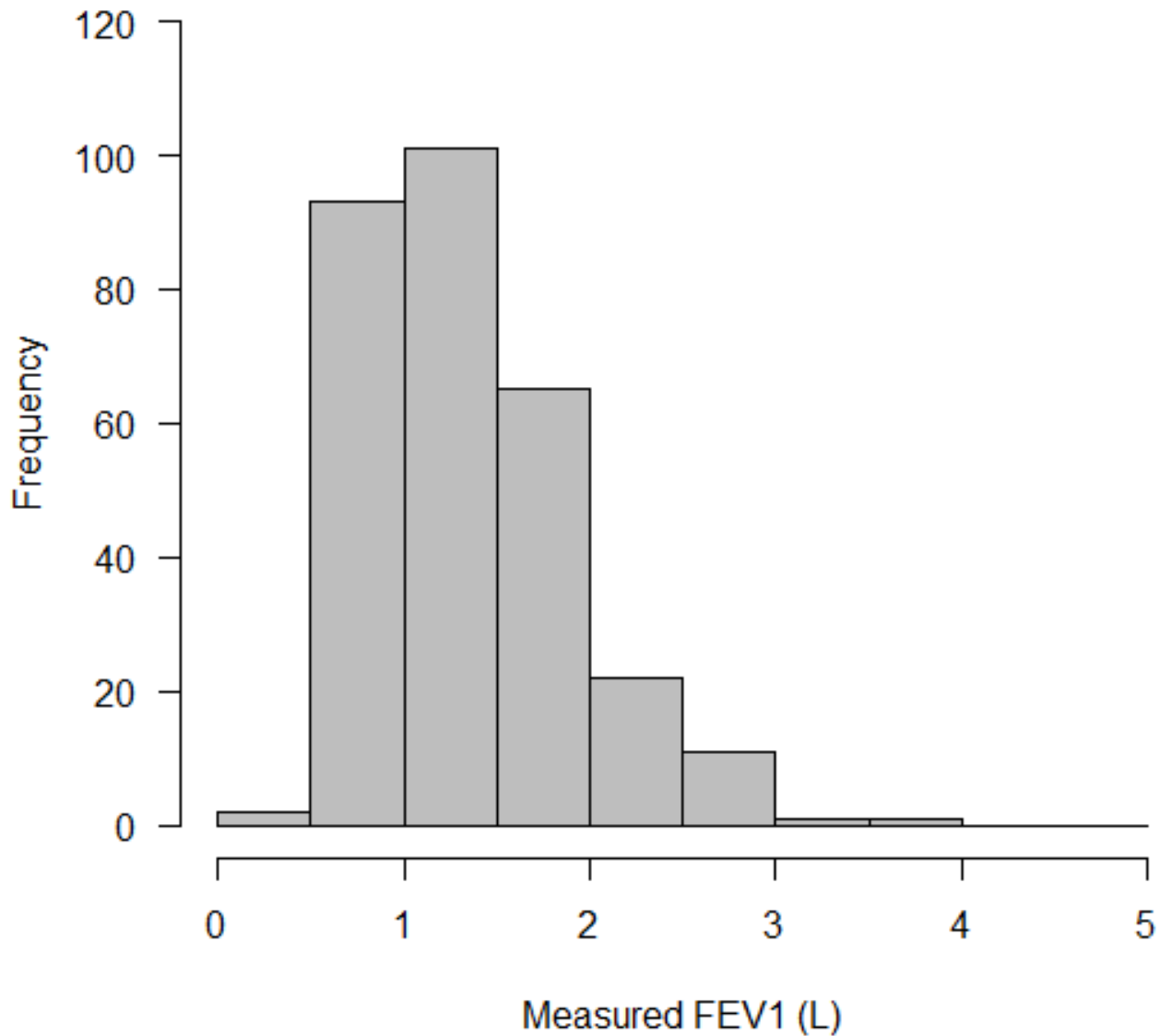


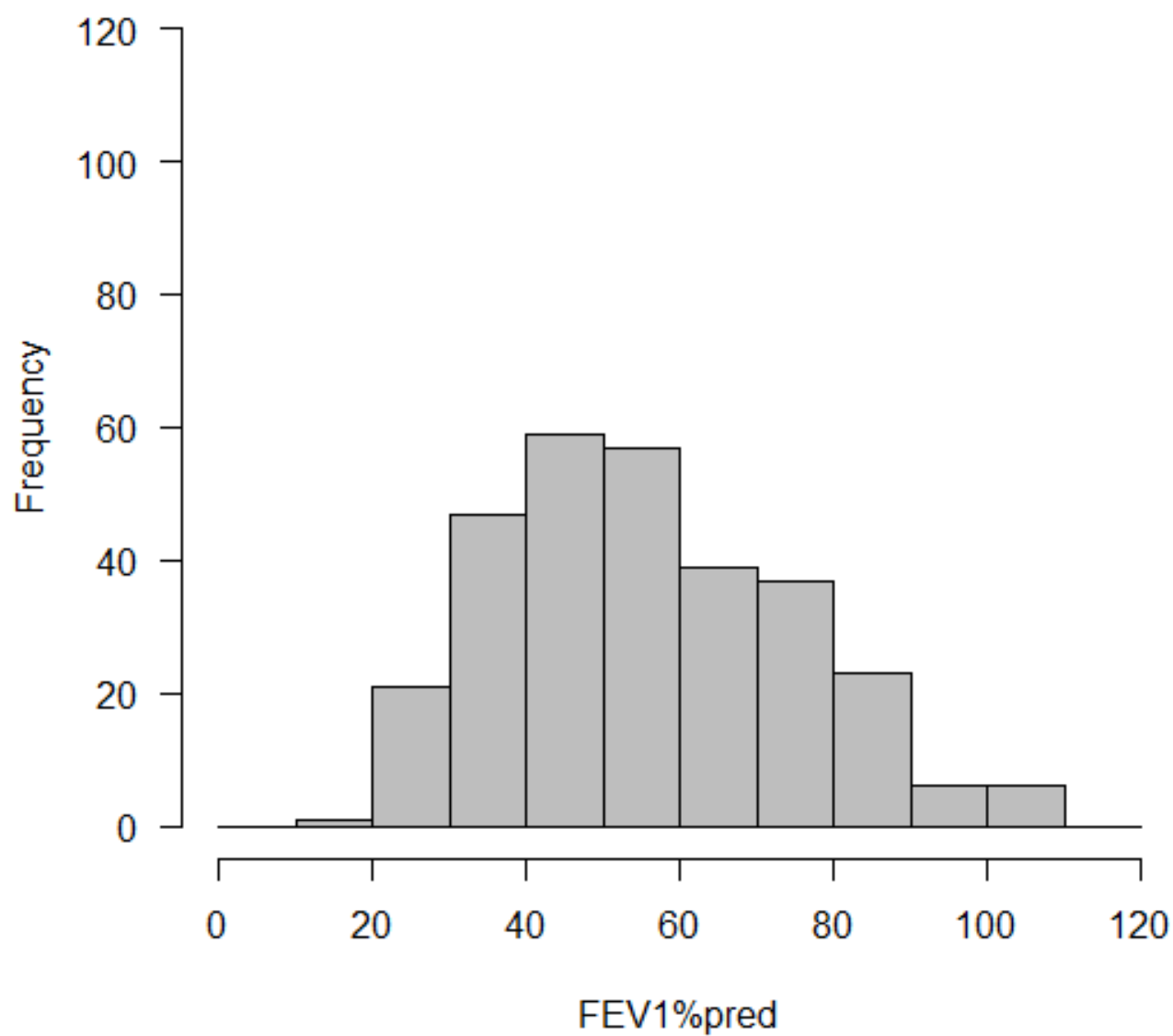
## Distribution Plot for FEV1 in Liters (in bins of 0.5 Liters)



SUPPLEMENTARY FIGURE S1 a)

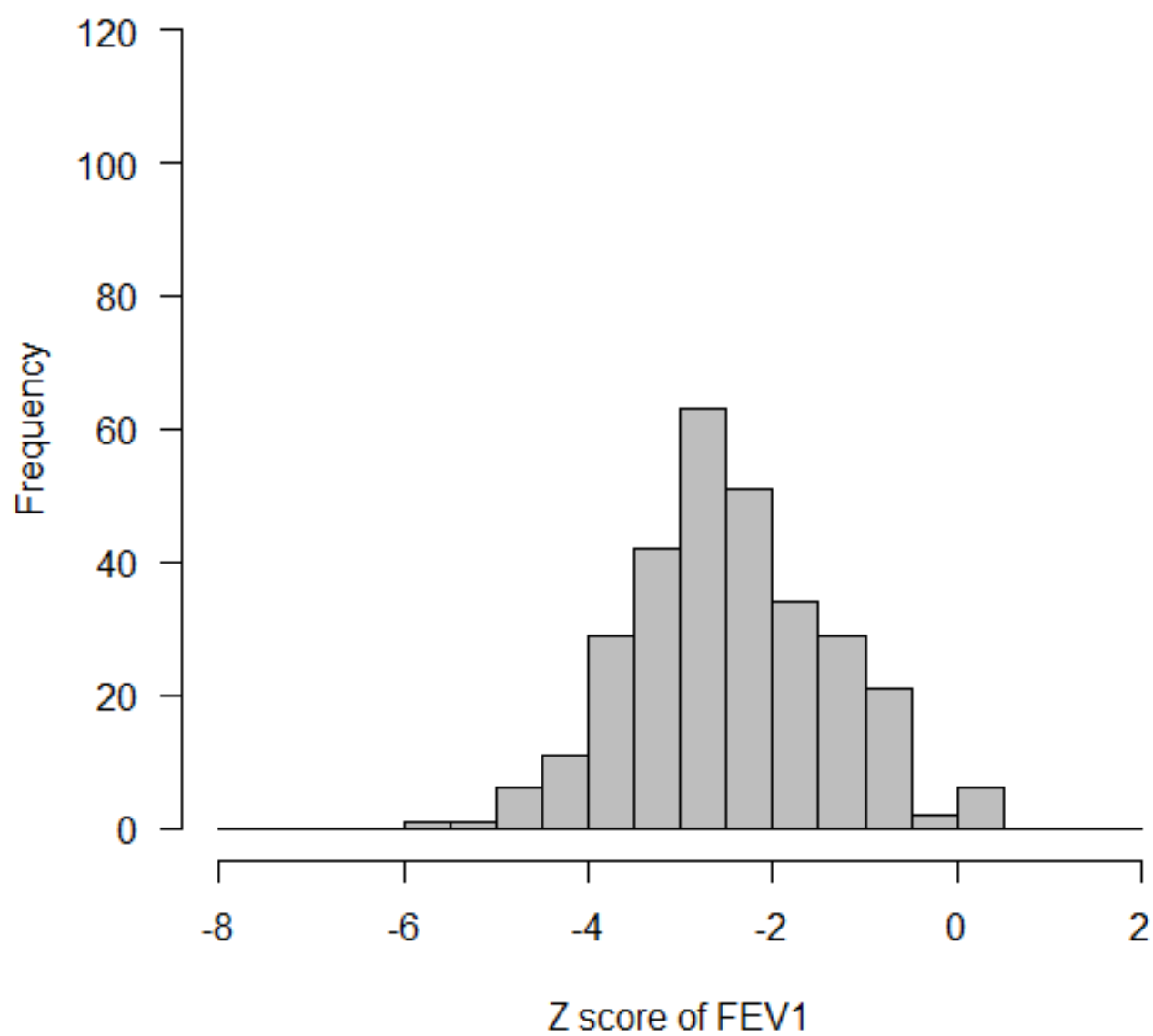
SUPPLEMENTARY FIGURE S1 Histograms displaying the distribution of: a) raw measurements of forced expiratory volume in 1 second ( $FEV_1$ ); b) percentages of predicted  $FEV_1$  ( $FEV_1\%pred$ ); c) z scores of  $FEV_1$ ; d)  $FEV_1$  over height squared ( $FEV_1 \cdot Ht^{-2}$ ); e)  $FEV_1$  over height cubed ( $FEV_1 \cdot Ht^{-3}$ ); f)  $FEV_1$  quotient ( $FEV_1Q$ ).

**Distribution Plot for FEV1%pred (in bins of 10%)**



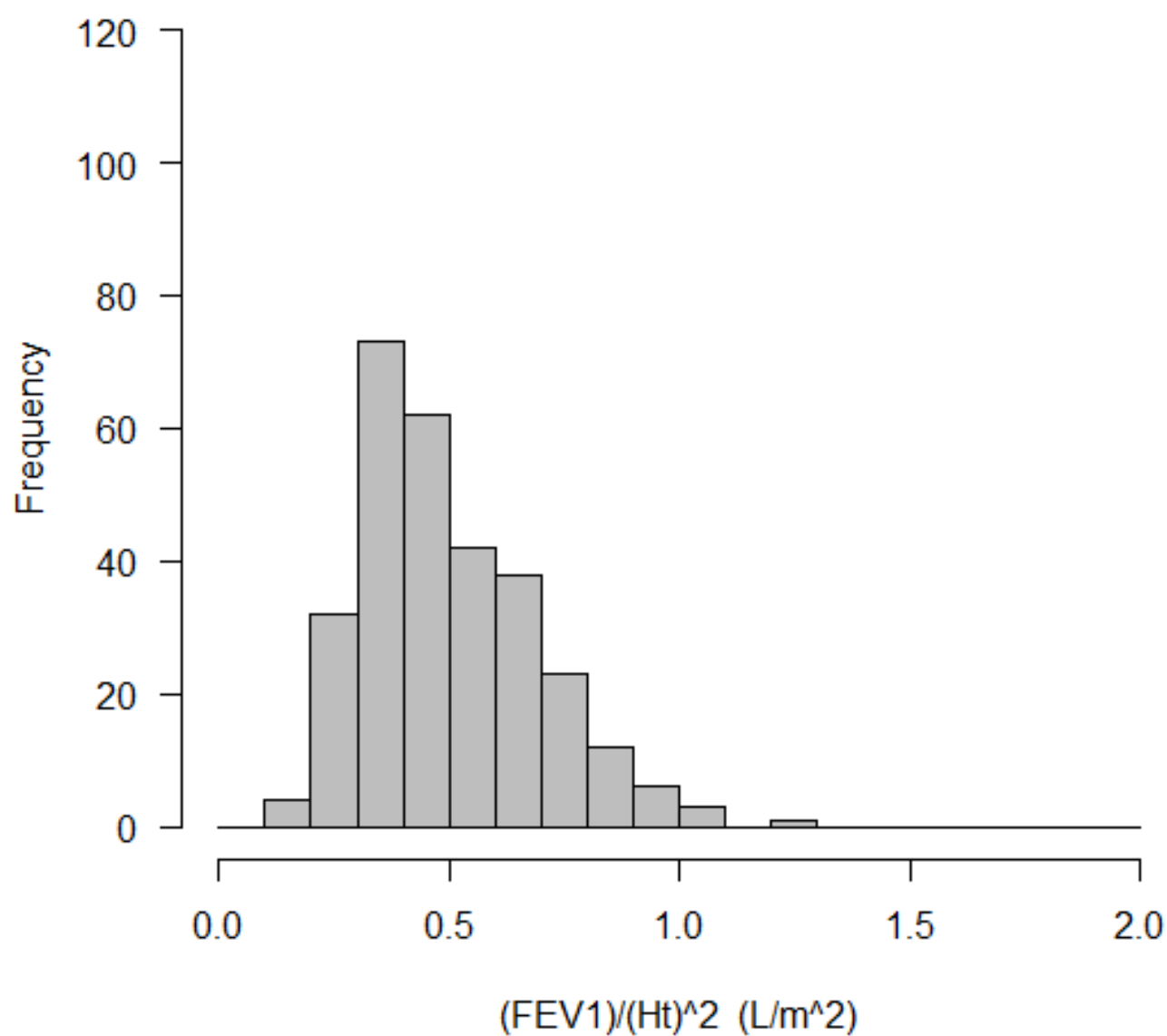
SUPPLEMENTARY FIGURE S1 b)

### Distribution Plot for Z score of FEV1 (in bins of 0.5)



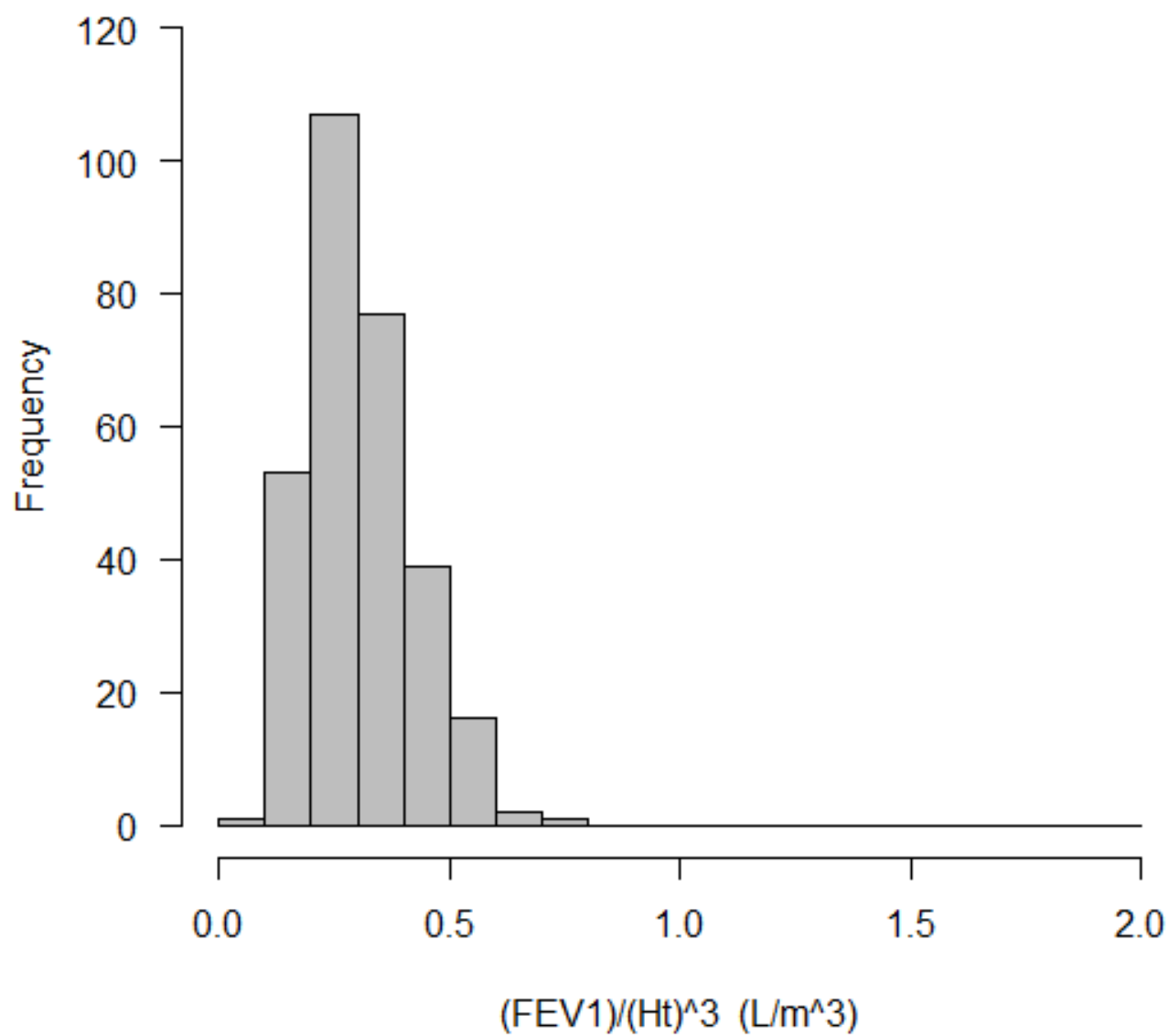
SUPPLEMENTARY FIGURE S1 c)

### Distribution Plot for $(FEV1)/(Ht)^2$ (in bins of 0.1 L/m<sup>2</sup>)



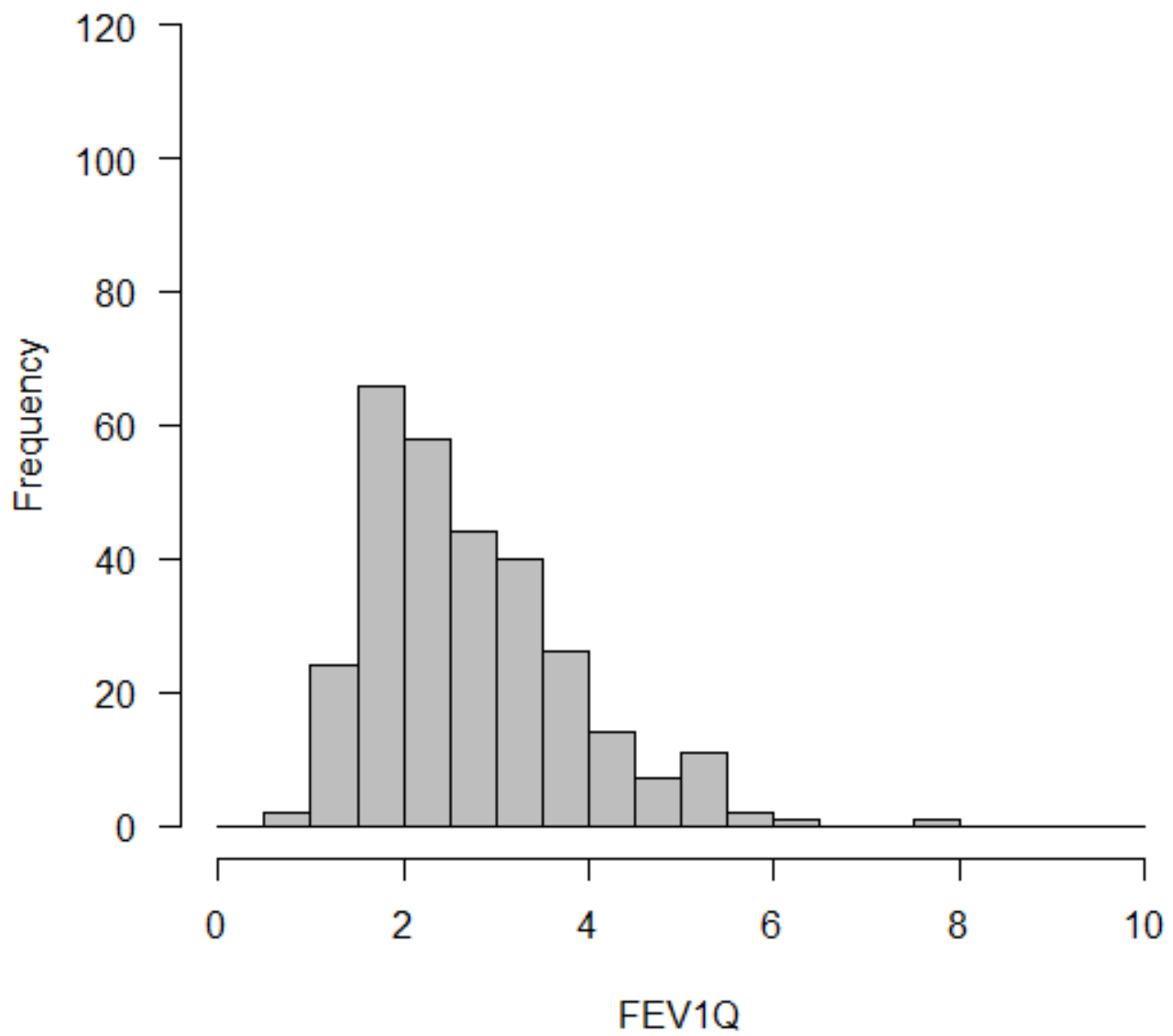
SUPPLEMENTARY FIGURE S1 d)

**Distribution Plot for  $(FEV1)/(Ht)^3$  (in bins of 0.1 L/m<sup>3</sup>)**



SUPPLEMENTARY FIGURE S1 e)

**Distribution Plot for FEV1Q (in bins of 0.5)**



SUPPLEMENTARY FIGURE S1 f)