



Control of lung defence by mucins and macrophages: ancient defence mechanisms with modern functions

William J. Janssen^{1,2}, Adrienne L. Stefanski², Bruce S. Bochner³ and Christopher M. Evans²

Affiliations:

¹Dept of Medicine, National Jewish Health, Denver, CO, USA.

²Dept of Medicine, University of Colorado School of Medicine, Aurora, CO, USA.

³Dept of Medicine, Division of Allergy-Immunology, Northwestern University Feinberg School of Medicine, Chicago, IL, USA.

Correspondence:

Christopher M. Evans, Dept of Medicine, Division of Pulmonary Sciences and Critical Care, University of Colorado Denver School of Medicine, 12700 E 19th Avenue, Mailstop 8611, Aurora, CO, 80045, USA.

E-mail: Christopher.Evans@ucdenver.edu

ABSTRACT Owing to the need to balance the requirement for efficient respiration in the face of tremendous levels of exposure to endogenous and environmental challenges, it is crucial for the lungs to maintain a sustainable defence that minimises damage caused by this exposure and the detrimental effects of inflammation to delicate gas exchange surfaces. Accordingly, epithelial and macrophage defences constitute essential first and second lines of protection that prevent the accumulation of potentially harmful agents in the lungs, and under homeostatic conditions do so effectively without inducing inflammation. Though epithelial and macrophage-mediated defences are seemingly distinct, recent data show that they are linked through their shared reliance on airway mucins, in particular the polymeric mucin MUC5B. This review highlights our understanding of novel mechanisms that link mucus and macrophage defences. We discuss the roles of phagocytosis and the effects of factors contained within mucus on phagocytosis, as well as newly identified roles for mucin glycoproteins in the direct regulation of leukocyte functions. The emergence of this nascent field of glycoimmunobiology sets forth a new paradigm for considering how homeostasis is maintained under healthy conditions and how it is restored in disease.



@ERSpublications

Mucins and macrophages coordinate the first and second lines of innate defence in the lungs

<http://ow.ly/s4t7301FLW1>

Received: Jan 17 2016 | Accepted after revision: June 12 2016 | First published online: Sept 01 2016

Support statement: W.J. Janssen: NIH HL109517, NIH HL114381; B.S. Bochner: NIH AI72265, NIH HL107151; C.M. Evans: NIH HL080396, NIH ES023384, AHA 14GRNT19990040. Funding information for this article has been deposited with the Open Funder Registry.

Conflict of interest: Disclosures can be found alongside this article at erj.ersjournals.com

Copyright ©ERS 2016

Introduction

The principal function of the lungs is gas exchange. To this end, under normal tidal breathing, 8000–12000 L of air pass through the lungs each day. Gas flows through multiple generations of conducting airways, which ultimately terminate in the alveoli. Alveoli are bounded by type I epithelial cells that cover over 95% of the lung surface. To allow for efficient exchange of O₂ and CO₂, type I epithelia are extremely thin and together with alveolar capillaries create a diffusion distance of <1 μm. Consequently, these thin surfaces are protected by elaborate defence mechanisms that must trap and eliminate particulates and pathogens before they reach the alveolar walls, while simultaneously preventing and/or suppressing potentially inflammatory responses that could injure delicate gas exchange structures. This review concentrates on the mucociliary escalator and alveolar macrophages (AMs) as crucial first and second lines of host defence in the lungs.

Airway tissues are exposed to ~100 billion inhaled particles daily [1]. Airborne particles can arise from natural and manmade sources, can vary in size and chemical composition, can differ in concentrations based on geography and local environments, and can thus result in heterogeneous pathological responses [2–8]. Most inspired materials are large enough to impact upon nasopharyngeal and tracheal mucosae where they are transported proximally by mucociliary clearance (MCC) and are ultimately eliminated by expectoration or swallowing. The remainder deposit in the lung periphery where they are ingested by AMs. Under healthy conditions, particulate deposition in the periphery is primarily limited to small particles (<1 μm diameter). However, under conditions where particulate concentrations are high or in pathological settings where MCC is impaired, larger particles can also accumulate in the lung periphery. Together, the coordinated functions of MCC and AMs eliminate inhaled particulates from the alveoli and airways, and hence comprise robust mechanisms for exogenous clearance. At the same time, clearance also removes endogenous materials that are generated during normal cell turnover or as a consequence of disease. Critically, although AM and MCC functions are ordinarily considered distinct, emerging data show that their functions are tightly linked through physiological and biochemical mechanisms. Below we describe mucus and macrophages separately, and this is followed by a discussion of emerging knowledge of interactions between them.

The mucus barrier and mucociliary clearance

MCC involves the coordinated activities of secretory cells that release polymeric mucin glycoproteins, and multiciliated cells whose apically localised motile cilia provide a means for transport and elimination. Cilia are molecular machines whose structural and motile components are highly regulated; their complex assembly, function and dysfunction in diseases are reviewed elsewhere [9, 10]. For the purposes of this review, we consider physiological roles of motile cilia, and we highlight key aspects of mucociliary interactions that are essential in the airways. MCC requires the coordinated regulation of airway surface liquid to control the osmolarity, viscoelasticity and resultant transportability of secreted mucus [11, 12]. This control is driven by electrolyte transport machinery intracellularly as well as the presence of osmolytes in the extracellular space. Although ciliated and mucous layers have been considered as separate entities (“sol” and “gel” phases), this distinction is challenged by recent studies demonstrating these “layers” as a more continuous glycoprotein hydrogel. Membrane mucins (MUC1, MUC4 and MUC16) that are present along cilia surfaces form a hydrated brush that allows for the free movement of cilia. The overlying, viscoelastic mucus layer is positioned atop this grafted brush of cilia. As a result, airway surface hydration regulates the balance between cilia and mucus structures maintained in a “gel-on-brush” conformation that promotes effective motility and MCC [13].

Loss of MCC is a significant cause of respiratory infections. For instance, impaired MCC is a primary pathophysiological feature of infection-related diseases such as primary ciliary dyskinesia (PCD), where cilia motility is impaired or absent, and cystic fibrosis (CF), where airway surface dehydration causes mucus adhesion to airway surfaces and hyperosmotic collapse of underlying cilia. Less appreciated perhaps are findings in chronic obstructive pulmonary disease (COPD) and asthma, which also show significant MCC impairment [14–21]. Unlike the primary roles of altered mucus and ciliary structures in CF and PCD, COPD- and asthma-related changes are secondary to inflammatory or injurious stimuli that cause impairments in ciliary motility and the dysregulated production of the two major secreted mucins MUC5AC and MUC5B [22–25].

Expression of the airway mucins MUC5AC and MUC5B

Under healthy conditions, MUC5AC and MUC5B are both produced in the lungs. MUC5AC is found predominantly in surface epithelia throughout the central conducting airways, whereas MUC5B is found mainly in submucosal glands of central airways (trachea and bronchi) and in non-ciliated surface epithelial cells of peripheral airways. MUC5AC levels increase in both airway surface and glandular epithelia in asthma [22, 23] and COPD [24, 26, 27]. By contrast, MUC5B levels are more variable. For example, in patients with established CF and COPD, MUC5B levels are increased in sputum [28, 29], which is predominated by central airway secretions supplied by tracheobronchial submucosal glands. However, in

patients with early or preclinical COPD or with strong allergic asthma, MUC5B levels actually decrease, especially within epithelial cells that line central and peripheral airway surfaces where *MUC5B* transcript levels are reduced by 90% or more [22–24, 27]. It is thus plausible that differential repression of MUC5B could affect MCC and contribute to lung pathologies. Indeed, recent studies in mice provide mechanistic support for this.

In mice, deletion of the *Muc5b* gene caused severe upper and lower airway MCC impairments and led to the development of lethal spontaneous infections [30]. Interestingly, although chronic infection and inflammation were prominent outcomes in *Muc5b* knockout mice, their pathobiological impacts were stronger than those observed in models of PCD. In cilia-defective *Dnaic*, *Pcdip1*, *Spef2* and *Cby* knockout mice, although MCC is severely impaired, upper airway pathologies were not reported to be lethal, and they did not carry over to the lower respiratory tract [31–33]. Thus, among MCC components in the lungs, Muc5b is a dominant regulator of homeostatic microbial elimination. In addition, during chronic spontaneous and acute experimental infections, Muc5ac production increased in *Muc5b* knockout mice. Although not entirely protective itself, Muc5ac could have played a role in delaying the effects of infections [30]. Possible explanations for differences between Muc5ac and Muc5b functions could reflect differences in their polymeric structures, glycosylation, and interactions with microbes or antimicrobial molecules. Determination of the specific and overlapping roles of Muc5ac and Muc5b remains an area of urgent investigation.

Mucin expression

MUC5AC/Muc5ac and *MUC5B/Muc5b* gene expression levels are regulated by endogenous and environmental factors. For human *MUC5B*, single nucleotide polymorphisms have been shown to regulate expression *via* control of promoter activity [34–36]. These genetic controls likely impact (or are impacted upon by) numerous innate and adaptive immune cytokine signalling pathways, as well as growth factor-regulated mechanisms that are associated with responses to inflammation, injury and tissue repair. These are reviewed extensively elsewhere [37–42]. Lastly, endogenous factors include developmental [43–46] and epigenetic [47–49] regulatory mechanisms, which can play roles in the expression of mucins in cancers.

Mucin polymerisation

The abilities of secreted mucins to regulate MCC are largely dependent on their polymer structures formed through disulfide bonds (figure 1). Like other members of the secreted polymeric mucin family, Muc5ac and Muc5b are composed of ~5–6% cysteines (~250–300 per molecule). They have cysteine-rich N- and C-terminal von Willebrand factor (vWF) type D-like and C-terminal cysteine knot disulfide bonding domains that are critical for intermolecular mucin assembly [51–53]. Additional highly conserved cysteine-rich CysD domains are interspersed in varying numbers in polymeric mucin carbohydrate-rich repeats [54–56]. Through intramolecular disulfide linkages, CysD domains are proposed to form hydrophobic loop structures that facilitate mucin alignment and regulate mucus mesh spacing [57]. Furthermore, in each mucin at least 100 cysteines exist that are not found in defined “domains”. The majority of disulfide bonds are thought to form intracellularly during assembly. In the extracellular environment, free cysteines that do exist can become oxidised and form additional cross links that increase the elastic moduli of mucus gels [50]. Disruption of N- and C-terminal bonds or CysDs can be sufficient to “loosen” obstructive mucus. Accordingly, current mucolytic therapies such as N-acetylcysteine, as well as investigative therapies, target these by reducing disulfides and decreasing mucus viscoelasticity, thereby enhancing mucus transport [58–60]. A current challenge is to determine which therapies can be given at doses that are well-tolerated and still maintain the benefits of efficient defence.

Mucin glycosylation

Whereas disulfide polymerisation is an important but underappreciated aspect of secreted mucins, their glycosylation is perhaps more eminent. Mucins are defined by their heavy glycosylation, especially within variable-sized glycan-rich domains (figure 1). In *MUC5AC* and *MUC5B*, these regions are called “PTS” domains due to their enrichment in prolines, threonines and serines. PTS-rich repeats are sites of O-glycosylation, starting with N-acetylgalactosamine on serine and threonine residues. Galactose and N-acetylglucosamine are then attached and elaborated linearly or in branches, and the sugars can be modified by sulfation or by the addition of terminal sialic acid and fucose glycans. Two chief purposes of mucin glycans are to adsorb water and to participate in host defence. For water adsorption, glycan variations can greatly affect the osmotic pressures imparted by mucus gels. For example, sialylated and sulfated termini are strongly charged, and their large polar surface areas promote both hydration and electronegative repulsion [11, 13]. In contrast, fucose has a lower charge and an approximately 50% lower polar surface area, which hypothetically promotes mucus aggregation, increases viscoelasticity, and thereby inhibits MCC. For host defence, mucin glycans are known to interact with sugar-binding molecules on a variety of bacteria that colonise or infect the lungs [61–67] and gastrointestinal tract [68–74], on fungi such

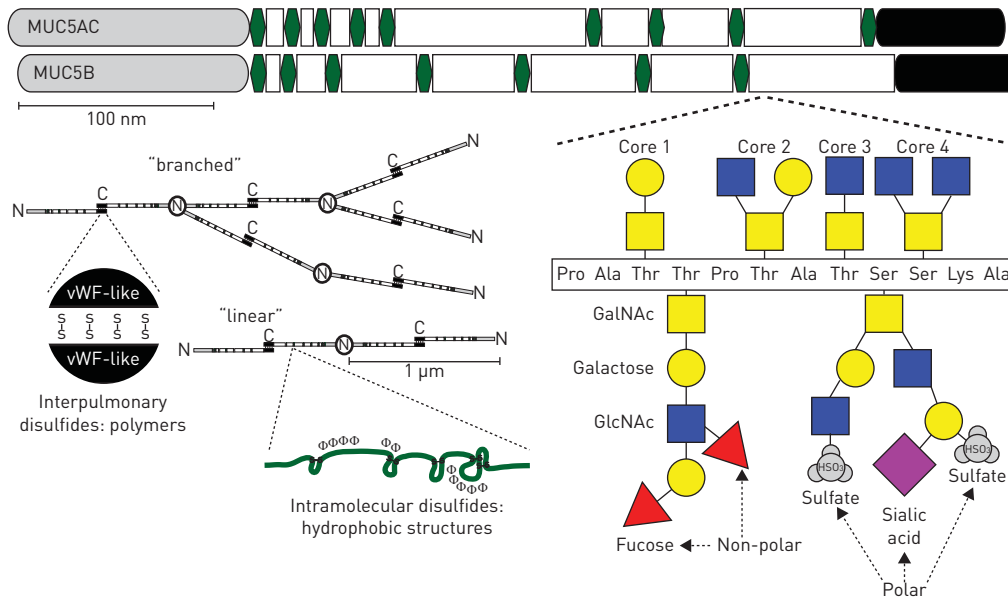


FIGURE 1 Polymeric and macromolecular structures of the major secreted mucins in the airways: MUC5AC and MUC5B. MUC5AC and MUC5B (and their orthologs) have amino (N) and carboxyl (C) termini that are evolutionarily conserved in polymeric mucins and von Willebrand factor (vWF, grey and black regions). The vWF-like domains are involved in covalent intermolecular disulfide assembly of C-terminal linked dimers and N-terminal linked multimers. Multimers can exist as linear or branched structures with sizes in the 1 to >10 MDa range. Between vWF-like domains are additional cysteine-rich regions (CysD domains, green hexagons) that are rich in hydrophobic amino acids (aa) and intramolecular disulfide bonds. CysDs are suggested to mediate the distribution of mucin strands and gel-pore size after secretion in healthy mucus, but can become oxidised and increase in polymer size and stiffness in disease [50]. The majority of the remaining mucin apoprotein backbone is rich in proline, serine and threonine. This “PTS” domain (white) is an imperfect repeat region and is the primary site of O-linked glycosylation. O-linkages on serine and threonine residues form Core 1–4 structures, which are defined the presence of N-acetylgalactosamine (GalNAc, yellow squares) linkages on the hydroxyl groups of serine and threonine followed by single or paired attachments of galactose (yellow circles) and/or N-acetylglucosamine (GlcNAc, blue squares). Lastly, galactose and GlcNAc glycans can be further substituted with fucose, sialic acid and sulfates that impart diverse charges that could affect mucus gel hydration and also form three-dimensional structural conformations that are critical for interactions with both pathogens and host-cell lectins. Glycan structures shown are examples of possible linkages and do not necessarily represent those found on specific mucins. Polar and non-polar glycans can be found on sugars from each core type, and can be found along the same or different branches.

as *Aspergillus fumigatus* [75], and on respiratory viruses such as respiratory syncytial virus and influenza [76, 77]. Whether these interactions are beneficial to the host or the microbe vary widely. Nonetheless, as the result of host genetics and environmental exposures (such as infectious or allergic states), protection is limited. Impaired defence can be affected by changes in the properties of mucus (e.g. through variations in *MUC5AC/Muc5ac* versus *MUC5B/Muc5b* expression levels or PTS domain glycosylation) that are often coupled with ciliary dysfunction (e.g. through loss/absence of ciliated cells or components of motile cilia) [78–91]. Taken together, the roles of mucins in the formation and maintenance of a mucus gel and their abilities to bind microorganisms demonstrate the coordinated function and dysfunction of mucus binding and clearance dynamics in host defence.

In summary, this conventional view of the mucociliary barrier as a defence system regulated by mucus and ciliary functions has been refined by the identification of key factors such as *Muc5b* and by the dissection of complex biophysical regulation of mucociliary interactions. An immediate challenge is to relate these to specific and required molecular components that regulate their intrinsic biophysical functions. Furthermore, new findings have introduced a novel set of interactions through which mucins regulate defence and inflammation in the lungs *via* resident and recruited pulmonary leukocyte populations. In particular, dendritic cell, eosinophil and macrophage functions in various tissues have been demonstrated to be regulated specifically by mucin terminal glycans. Below we focus on macrophage and eosinophil functions that are regulated by extracellular oligosaccharides, including the airway mucin *Muc5b*.

Macrophage ontogeny and clearance mechanisms

Particulates and microbes that evade the first line of defence, that is, epithelial mucus, reach the distal lung. From there, they must be cleared rapidly and efficiently by the second line of defence: phagocytes.

AMs are the dominant phagocytic cell in the lungs and during health account for up to 90% of the leukocytes in airspaces [92–95]. They reside in the alveolar lumen and perhaps also in the airways. In addition to clearing inhaled particulates, they are critical for removing dying cells and maintaining alveolar homeostasis. Recent evidence suggests that AMs arise from progenitors that occupy the fetal liver and yolk sac during embryogenesis [96–98]. At birth, these cells populate the airspaces where they quickly mature into resident AMs. Importantly, AMs self-renew throughout life, and in the absence of disease they are not replaced by monocytes from the circulation [99–101]. During inflammation, resident AMs proliferate locally [102]. At the same time, monocytes from the circulation migrate to inflamed regions where they mature into macrophages, termed monocyte-derived AMs (MDAMs) [103]. Hence, the inflammatory AM pool contains cells of both embryonic and postnatal origin. Although both macrophage subsets demonstrate phagocytic capacity, their respective contributions to the clearance of exogenous particulates and pathogens and to the removal of endogenous debris and cells remain unknown. Intriguingly, as inflammation resolves, MDAMs undergo programmed cell death and are removed from the lungs, leaving behind the embryonically derived resident AMs to maintain alveolar homeostasis [103].

During health, resident AMs function as sentinels, constantly surveying the luminal environment for pathogens and inhaled particulates. Under most circumstances, such agents are cleared silently and quickly, without inducing systemic inflammatory responses that could injure alveolar gas exchange structures. Indeed, experimental depletion of AMs results in exaggerated inflammatory responses [104–112], yet at the same time AM absence impairs the ability to control infection [107, 110, 113], demonstrating that restrained responses are more efficacious and beneficial. As discussed below, the alveolar environment plays an essential role in regulating AM endocytic and inflammatory responses, and it also contains a diverse array of molecules that recognise pathogens and facilitates clearance by noninflammatory phagocytic defence.

Phagocytic mechanisms

AMs employ a number of mechanisms to ingest particulates and pathogens, all of which involve endocytosis, a process in which the plasma membrane surrounds a target, invaginates and then pinches off to form a membrane-bound vesicle (reviewed in [114, 115]). Phagocytosis is the primary endocytic process by which AMs clear exogenous materials, and it is driven by cytoskeletal rearrangements that lead to rapid internalisation of pathogens such as bacteria or fungi in a membrane-bound phagosome. The phagosome becomes acidified after sequential fusion with endosomes and lysosomes, which contain hydrolytic enzymes and reactive oxygen species that digest and destroy the target. An initial interface that AMs have with particles and pathogens occurs through a phagocytic synapse formed by a diverse array of plasma membrane proteins that recognise targets through specific moieties on them, including microbial and host cell glycoconjugates. These AM receptors initiate and/or modulate phagocytosis.

Phagocytic receptors

AMs are equipped with a vast repertoire of phagocytic receptors. Importantly, during microbial contact many different receptor families are often simultaneously activated. Some receptors directly recognise specific molecules on phagocytic targets (*e.g.* phosphatidylserine or inflammasome molecules), whereas others bind to targets coated with opsonins (*e.g.* immunoglobulins, complement components and surfactant materials). In addition, whereas some (*e.g.* Fc receptors) lead directly to pathogen engulfment, others (*e.g.* Toll-like receptors (TLRs)) promote phagocytosis indirectly by upregulating the expression of phagocytic receptors and their downstream signalling molecules [116–118]. Here, we discuss main classes of receptors on AMs in the context of opsonins and signals present in airway mucus [119–125].

Immunoglobulin signalling is an important adaptive immune process that mediates AM phagocytosis. AMs express high levels of Fc γ -receptors I (CD64), II (CD32) and III (CD16) that recognise the Fc region of IgG. Biologically relevant concentrations of IgG can be found in the alveolar lining fluid of healthy humans [126]. To trigger phagocytosis, Fc γ -receptors bind multiple IgG molecules within an immune complex. Fc γ RI is a high affinity receptor that in addition to respiratory burst and microbial killing also leads to phagocytosis. In comparison, Fc γ RII and Fc γ RIII could also promote phagocytosis but have low binding affinity. Respiratory epithelial cells secrete IgA by transcytosis, and IgA can easily be detected in the lumens of both the proximal airways and alveoli [126, 127]. AMs express low levels of both Fc α RI (CD89) and Fc α / μ R that bind IgA and drive phagocytosis [128]. Adaptive immune immunoglobulin functions are linked to glycan structures through the recognition of carbohydrate antigens, N- and O-glycosylation of their Fc domains, and physical association with secreted mucins that have specific immunoglobulin-binding domains [129–132].

The complement system aids in innate host defence by opsonising immune complexes and pathogens, enhancing their killing and removal. Alveolar lavage fluid of healthy humans contains components of the

classical (C1q, C2, C3, C4) and alternative (C3, Factor B) pathways [133–135]. The classical pathway is primarily activated by the interaction of C1q with antigen–antibody complexes, but it can also be activated by direct binding of C1q to bacterial, fungal and virus membrane components [136, 137]. Opsonisation of targets by either means can stimulate phagocytosis. AMs express three complement receptors (CRs), CR1, CR3 and CR4. CR1 is incapable of internalising opsonised particles on its own, but can enhance Fc-mediated phagocytosis. CR3 and CR4 are heterodimers that share a common β_2 integrin chain (CD18) paired with specific α chains. CR4 contains the α_X subunit (CD11c) and binds to particles opsonised with C3b and iC3b fragments. CR3 contains an α_M chain (also known as CD11b) with a carbohydrate-binding lectin site. Accordingly, in addition to binding particles opsonised with C3b and iC3b fragments, CR3 binds microbial cell wall glycan-containing components including lipopolysaccharide, mannan, β -glucan and others [138, 139]. While CR3 appears to be capable of internalising opsonised bacteria independently [140, 141], it also functions cooperatively with other receptors, including CR1, CD14, Fc γ R and Fc α RI [138, 142–144], to enhance particle clearance. Not surprisingly, mice deficient in CR3 have impaired host defence to Gram-negative bacteria, Gram-positive bacteria and yeast [145, 146]. Importantly, studies from rodents demonstrate that cell surface expression of CRs varies markedly on resident AMs *versus* recruited MDAMs [103]: resident AMs express high levels of CD11c/CR4 but not CD11b/CR3, whereas recruited MDAMs have high levels of CD11b/CR3 but low levels of CD11c/CR4. This raises the intriguing hypothesis that AM subpopulations have complementary functions to control infectious and inflammatory host defence. Like immunoglobulins, complement components are found in airway mucus, and their levels are upregulated in inflammation [147, 148]. Furthermore, complement components also increase the expression of Muc5ac in airway epithelial cells [149].

Other classes of carbohydrate lectins, the C-type lectins, are calcium-dependent carbohydrate-binding proteins that contain a conserved glycan recognition domain and are involved in pathogen recognition and phagocytosis [150]. In the context of lung host defence, two groups of C-type lectins are well recognised: the pulmonary collectins (surfactant protein (SP)-A and SP-D) and the pathogen-binding receptors (namely the mannose receptor (CD206) and Dectin-1). SP-A and SP-D comprise highly oligomerised monomers that are formed by N-terminal collagen-like domains linked to a C-terminal carbohydrate recognition domain by a central hinge region. Through their carbohydrate recognition domains, SP-A and SP-D recognise sugar residues on microbial pathogens. Consequently, they opsonise Gram-negative and Gram-positive bacteria, mycobacteria, fungi, and viruses such as influenza A and respiratory syncytial virus. A number of candidate receptors for collectin-opsonised particles exist on AMs, including C1qRp, SP-R210, CD14 and the calreticulin–CD91 complex (reviewed extensively in [151]). In addition to enhancing phagocytosis through their opsonising effects, collectins could also promote phagocytosis indirectly. For example, SP-A enhances expression of scavenger receptor A and could augment Fc-receptor- and CR-mediated phagocytosis [152–154]. In addition, both SP-A and SP-D appear to increase cell surface localisation and hence the phagocytic function of the mannose receptor [155–157]. The mannose receptor (CD206) is highly expressed on AMs, and contains an extracellular domain that recognises mannose, N-acetylglucosamine and fucose glycans. Accordingly, CD206 promotes phagocytosis of pulmonary pathogens with diverse extracellular carbohydrate signatures, including *Streptococcus pneumoniae*, *Klebsiella pneumoniae*, *Mycobacterium tuberculosis*, *Pneumocystis jirovecii* and fungi such as *Candida* and *Aspergillus* [158]. The precise mechanisms by which CD206 participates in phagocytosis are unclear, and it is likely that interactions with co-receptors are required [159]. Dectin-1 was originally identified as a dendritic cell-specific receptor, but it is also expressed on AMs [160]. Dectin-1 recognises β -glucans found in fungal cell walls [161, 162] and also particles opsonised with pentraxin-3, a protein rapidly synthesised and secreted by mononuclear phagocytes in response to pro-inflammatory signals [163]. Together, these classes of receptors highlight a group of surface molecules that interact with exogenous and endogenous constituents of airway surface liquid and mucus to mediate AM phagocytic defence.

In immunocompetent individuals, defensive components such as IgG increase in the lungs during infection, promoting pathogen clearance through the recognition of numerous antigen types, including carbohydrate epitopes. Indeed, bacterial targets such as surface polysaccharides are exploited for use in developing effective pneumococcal vaccines [164]. Conversely, recurrent sinopulmonary infections and impaired pathogen clearance are common in patients with immunoglobulin deficiencies [165–171]. In addition, in common chronic airway diseases, including asthma, COPD and CF, impaired clearance of microbial pathogens by AMs has been extensively documented [172–175]. AM dysfunction correlates with disease severity and exacerbation frequency [176–178]. While aetiologies vary among diseases, common features include altered expression of phagocytic receptors, reduced lysosomal killing and enhanced production of mediators that can worsen inflammation by inducing collateral damage to surrounding tissues. These defects in AMs are either absent or reduced in mononuclear phagocytes isolated from other sites (*e.g.* blood). Therefore, perturbations in the local environment appear to play a dominant role in altering AM function in these diseases.

Emerging links between airway mucins and alveolar macrophage function

Based on the distinct anatomical localisation and the highly dedicated cellular mechanisms involved in the specification of mucin-producing goblet cells in the airways and phagocytic macrophages in the alveoli, there is an outward appearance of discrete compartmentalisation of their functions. However, the limiting of the localisation of resident AMs to the alveolar space is not entirely warranted, because intraluminal macrophages in conducting airways account for 2–8% of the total resident macrophage population in rat lungs [179–185]. Even within the alveolar compartment, recent evidence demonstrates that a subpopulation of AMs, termed sessile AMs, can communicate across great distances *via* a calcium-dependent signalling AM–alveolar epithelial circuit that ultimately suppresses immune function [186]. Recent studies show that there are indeed functional links between airway mucus and macrophage function, and that these links are crucial for host defence. At one level, secreted factors such as immunoglobulins and complement components are abundant in secreted mucus, suggesting that mucus is an important carrier of these defensive molecules. In addition, there are also direct links between secreted mucins and resident innate immune cells through their coordinated activities when resolving inflammation, and physical interactions between glycans on mucins and carbohydrate-binding lectin receptors on leukocytes such as the sialic acid-binding immunoglobulin-like lectins (Siglec's). We propose that mucin–leukocyte interactions regulate homeostatic, inflammatory and resolving immune functions through signalling and physical clearance mechanisms (figure 2).

In the mouse, the intestinal mucin Muc2 interacts with glycan-selective immunoregulatory receptors on dendritic cells that mediate the development of inflammatory and regulatory lymphocyte subsets. In this setting, Muc2 glycans bind to two lectins (Dectin-1 and Galectin-3) that function cooperatively with the inhibitory IgG receptor FcγR3 to suppress inflammatory signals and promote tolerance [187]. In a similar vein, goblet cells have also been shown to be an important mechanism for the delivery of antigens to resident monocyte-derived dendritic cells in the small intestine [188]. The result of these activities is the development of tolerance to foreign antigens introduced by ingested food particles.

In the lungs, inhibitory regulation of leukocyte functions appears to be mediated by acute control of leukocyte activation states. In mice, Muc5b binds through its α 2,3-linked sialoside glycans to Siglec-F, an inhibitory SH2 domain-containing-phosphatase signalling immunoreceptor on eosinophils and AMs (figure 3) [189]. On eosinophils, Siglec-F mediates apoptosis [190–193], thereby functioning as a significant mechanism for resolving allergic inflammation. Indeed, mice lacking Siglec-F or one particular enzyme needed for this Muc5b sialylation step, ST3Gal-III, fail to make airway ligands for Siglec-F, and display exaggerated and selective lung eosinophilia in a type 2 allergic inflammation lung model [194–198]. In this context, Muc5b presumably contributes to the physical removal of cells by MCC while simultaneously preventing continued activation and mediator release into airspaces during elimination from the mouse lung. In humans, the Siglec-F paralog Siglec-8 also reduces eosinophil survival *via* sialylated and sulfated

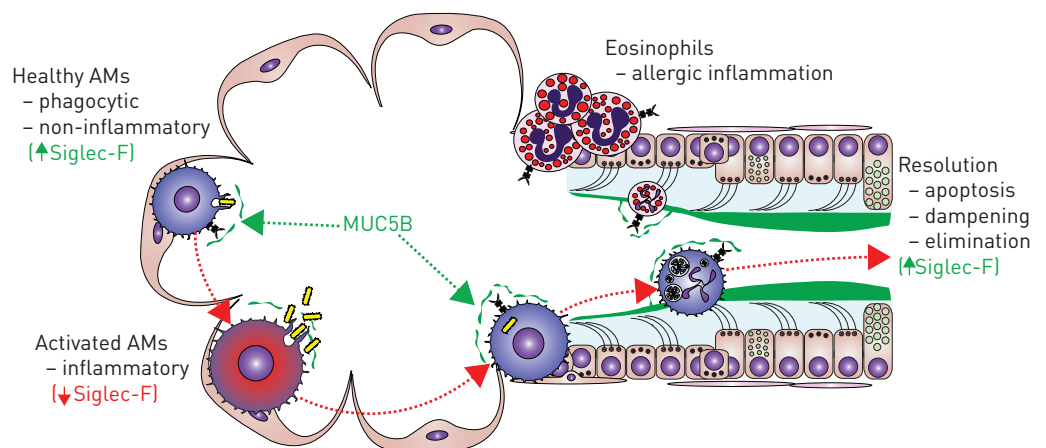


FIGURE 2 Mucin–leukocyte interactions during homeostasis and inflammation. In healthy lungs, resident resting alveolar macrophages (AMs) are defensive and noninflammatory. MUC5B from bronchioles mixes with alveolar fluids, providing a route for MUC5B to contact alveolar AMs. Homeostatic or low-dose stimuli elicit defensive functions such as phagocytosis. During inflammation, resident AMs can become activated, and this is associated with a decrease in their Siglec-F surface expression. In addition, leukocytes, such as monocyte-derived macrophages (which lack Siglec-F) or eosinophils (which express Siglec-F) are recruited and persist for brief periods of time. These transient populations are eliminated as inflammation resolves. In mice, resolution involves Siglec-F-mediated reductions in leukocyte activation and survival. Damaged and apoptotic cells are subsequently eliminated by MUC5B-mediated mucociliary clearance.

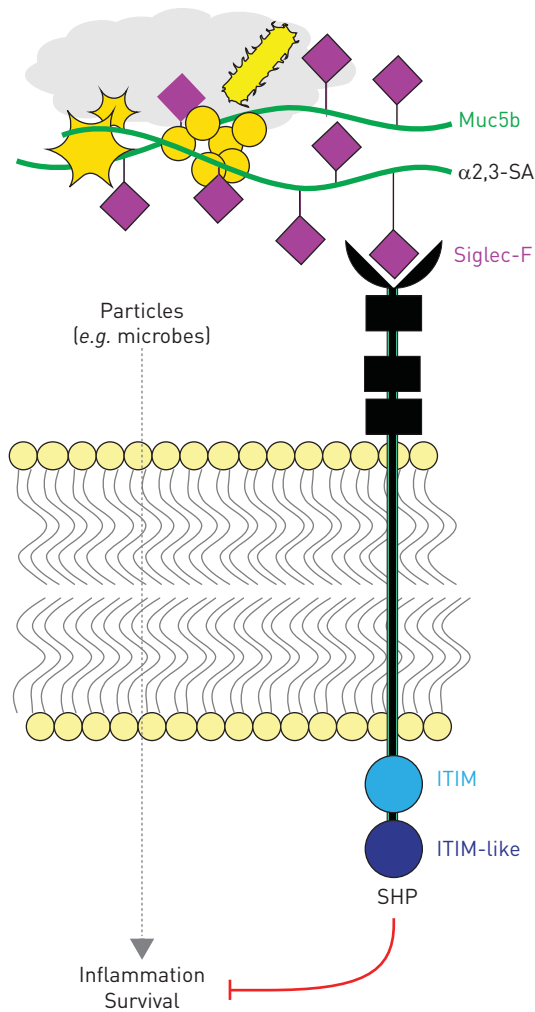


FIGURE 3 Putative Muc5b:Siglec-F signal transduction mechanism. Muc5b, via its display of multivalent α 2,3-sialic acid (SA) linkages on galactose residues, binds to the N-terminal lectin domain of Siglec-F, thereby driving immunoreceptor tyrosine-based inhibitory motif (ITIM) and ITIM-like domain activation. ITIM signals putatively activate Src homology region 2 domain-containing phosphatase (SHP) enzymes that suppress kinase-activated inflammatory signals and can also promote apoptosis.

ligands, but the specificity observed between Muc5b and Siglec-F in mice is not as well conserved between MUC5B and Siglec-8 in humans [199–201]. Rather, Siglec-9 is an isoform that is bound by MUC5B sialosides, and it is expressed on neutrophils, natural killer cells, dendritic cells and monocytes/macrophages [199]. Indeed, resident AMs in healthy mouse lungs also express Siglec-F, but its role beyond that of a cell surface marker is not yet clear. Given the associations of mucus and macrophage dysfunction in numerous lung pathologies, determining the nature of their interactions will be of tremendous interest as the field advances. With the emergence of mucins as important mediators of defence, and the recognition of the crucial significance of the glycobiology of innate and adaptive immunity, efforts to interrogate these will involve both challenging and exciting experimental approaches.

Conclusion

Innate defences in the lungs are essential for maintaining efficient gas exchange. As first and second lines of host defence, mucins and macrophages play critical roles that are integrated by their physical and physiological interactions. The emergence of these links presents a convergence of new challenges that connect epithelial and innate immune programmes.

References

- 1 O'Connell S, Au-Yeung HK, Gregory CJ, *et al.* Outdoor and indoor respirable air particulate concentrations in differing urban traffic microenvironments. *J Toxicol Environ Health A* 2008; 71: 1069–1072.
- 2 Fromme H. Partikuläre Belastungssituation in Innenräumen, unter besonderer Berücksichtigung von Wohninnenräumen, Gemeinschaftseinrichtungen und Gaststätten [Particulate matter in indoor environments-exposure situation in residences, schools, pubs, and related recreational spaces]. *Gesundheitswesen* 2006; 68: 714–723.
- 3 Kliucininkas L, Martuzevicius D, Krugly E, *et al.* Indoor and outdoor concentrations of fine particles, particle-bound PAHS and volatile organic compounds in Kaunas, Lithuania. *J Environ Monit* 2011; 13: 182–191.
- 4 Guo H, Morawska L, He C, *et al.* Characterization of particle number concentrations and PM_{2.5} in a school: influence of outdoor air pollution on indoor air. *Environ Sci Pollut Res Int* 2010; 17: 1268–1278.
- 5 Gordon T. Linking health effects to PM components, size, and sources. *Inhal Toxicol* 2007; 19: Suppl. 1, 3–6.

- 6 Kappos AD, Bruckmann P, Eikmann T, *et al.* Health effects of particles in ambient air. *Int J Hyg Environ Health* 2004; 207: 399–407.
- 7 Health effects of outdoor air pollution. Part 2. Committee of the Environmental and Occupational Health Assembly of the American Thoracic Society. *Am J Respir Crit Care Med* 1996; 153: 3–50.
- 8 Kelly FJ, Kelly J. London air quality: a real world experiment in progress. *Biomarkers* 2009; 14: Suppl. 1, 5–11.
- 9 Hildebrandt F, Benzing T, Katsanis N. Ciliopathies. *N Engl J Med* 2011; 364: 1533–1543.
- 10 Knowles MR, Daniels LA, Davis SD, *et al.* Primary ciliary dyskinesia. Recent advances in diagnostics, genetics, and characterization of clinical disease. *Am J Respir Crit Care Med* 2013; 188: 913–922.
- 11 Button B, Okada SF, Frederick CB, *et al.* Mechanosensitive ATP release maintains proper mucus hydration of airways. *Sci Signal* 2013; 6: ra46.
- 12 Button B, Picher M, Boucher RC. Differential effects of cyclic and constant stress on ATP release and mucociliary transport by human airway epithelia. *J Physiol* 2007; 580: 577–592.
- 13 Button B, Cai LH, Ehre C, *et al.* A periciliary brush promotes the lung health by separating the mucus layer from airway epithelia. *Science* 2012; 337: 937–941.
- 14 O’Riordan TG, Zwang J, Smaldone GC. Mucociliary clearance in adult asthma. *Am Rev Respir Dis* 1992; 146: 598–603.
- 15 Messina MS, O’Riordan TG, Smaldone GC. Changes in mucociliary clearance during acute exacerbations of asthma. *Am Rev Respir Dis* 1991; 143: 993–997.
- 16 Foster WM, Langenback EG, Bergofsky EH. Lung mucociliary function in man: interdependence of bronchial and tracheal mucus transport velocities with lung clearance in bronchial asthma and healthy subjects. *Ann Occup Hyg* 1982; 26: 227–244.
- 17 Thomas B, Rutman A, Hirst RA, *et al.* Ciliary dysfunction and ultrastructural abnormalities are features of severe asthma. *J Allergy Clin Immunol* 2010; 126: 722–729.
- 18 Moller W, Felten K, Sommerer K, *et al.* Deposition, retention, and translocation of ultrafine particles from the central airways and lung periphery. *Am J Respir Crit Care Med* 2008; 177: 426–432.
- 19 Morgan L, Pearson M, de Jongh R, *et al.* Scintigraphic measurement of tracheal mucus velocity *in vivo*. *Eur Respir J* 2004; 23: 518–522.
- 20 Smaldone GC, Foster WM, O’Riordan TG, *et al.* Regional impairment of mucociliary clearance in chronic obstructive pulmonary disease. *Chest* 1993; 103: 1390–1396.
- 21 Hasani A, Pavia D, Rotondetto S, *et al.* Effect of oral antibiotics on lung mucociliary clearance during exacerbation of chronic obstructive pulmonary disease. *Respir Med* 1998; 92: 442–447.
- 22 Ordonez CL, Khashayar R, Wong HH, *et al.* Mild and moderate asthma is associated with airway goblet cell hyperplasia and abnormalities in mucin gene expression. *Am J Respir Crit Care Med* 2001; 163: 517–523.
- 23 Woodruff PG, Modrek B, Choy DF, *et al.* T-helper type 2-driven inflammation defines major subphenotypes of asthma. *Am J Respir Crit Care Med* 2009; 180: 388–395.
- 24 Innes AL, Woodruff PG, Ferrando RE, *et al.* Epithelial mucin stores are increased in the large airways of smokers with airflow obstruction. *Chest* 2006; 130: 1102–1108.
- 25 Fahy JV, Dickey BF. Airway mucus function and dysfunction. *N Engl J Med* 2010; 363: 2233–2247.
- 26 Caramori G, Casolari P, Di Gregorio C, *et al.* MUC5AC expression is increased in bronchial submucosal glands of stable COPD patients. *Histopathology* 2009; 55: 321–331.
- 27 Caramori G, Di Gregorio C, Carlstedt I, *et al.* Mucin expression in peripheral airways of patients with chronic obstructive pulmonary disease. *Histopathology* 2004; 45: 477–484.
- 28 Kirkham S, Kolsum U, Rousseau K, *et al.* MUC5B is the major mucin in the gel phase of sputum in chronic obstructive pulmonary disease. *Am J Respir Crit Care Med* 2008; 178: 1033–1039.
- 29 Kirkham S, Sheehan JK, Knight D, *et al.* Heterogeneity of airways mucus: variations in the amounts and glycoforms of the major oligomeric mucins MUC5AC and MUC5B. *Biochem J* 2002; 361: 537–546.
- 30 Roy MG, Livraghi-Butrico A, Fletcher AA, *et al.* Muc5b is required for airway defence. *Nature* 2014; 505: 412–416.
- 31 Ostrowski LE, Yin W, Rogers TD, *et al.* Conditional deletion of *dnaic1* in a murine model of primary ciliary dyskinesia causes chronic rhinosinusitis. *Am J Respir Cell Mol Biol* 2010; 43: 55–63.
- 32 Voronina VA, Takemaru K, Treuting P, *et al.* Inactivation of Chibby affects function of motile airway cilia. *J Cell Biol* 2009; 185: 225–233.
- 33 McKenzie CW, Klonoski JM, Maier T, *et al.* Enhanced response to pulmonary *Streptococcus pneumoniae* infection is associated with primary ciliary dyskinesia in mice lacking *Pcdp1* and *Spzf2*. *Cilia* 2013; 2: 18.
- 34 Nakano Y, Yang IV, Walts AD, *et al.* MUC5B promoter variant rs35705950 affects MUC5B expression in the distal airways in idiopathic pulmonary fibrosis. *Am J Respir Crit Care Med* 2016; 193: 464–466.
- 35 Kamio K, Matsushita I, Hijikata M, *et al.* Promoter analysis and aberrant expression of the MUC5B gene in diffuse panbronchiolitis. *Am J Respir Crit Care Med* 2005; 171: 949–957.
- 36 Seibold MA, Wise AL, Speer MC, *et al.* A common MUC5B promoter polymorphism and pulmonary fibrosis. *N Engl J Med* 2011; 364: 1503–1512.
- 37 Whitsett JA, Alenghat T. Respiratory epithelial cells orchestrate pulmonary innate immunity. *Nat Immunol* 2015; 16: 27–35.
- 38 Boucherat O, Boczkowski J, Jeannotte L, *et al.* Cellular and molecular mechanisms of goblet cell metaplasia in the respiratory airways. *Exp Lung Res* 2013; 39: 207–216.
- 39 Evans CM, Koo JS. Airway mucus: the good, the bad, the sticky. *Pharmacol Ther* 2009; 121: 332–348.
- 40 Thai P, Loukoianov A, Wachi S, *et al.* Regulation of airway mucin gene expression. *Annu Rev Physiol* 2008; 70: 405–429.
- 41 Voynow JA, Gendler SJ, Rose MC. Regulation of mucin genes in chronic inflammatory airway diseases. *Am J Respir Cell Mol Biol* 2006; 34: 661–665.
- 42 Rose MC, Voynow JA. Respiratory tract mucin genes and mucin glycoproteins in health and disease. *Physiol Rev* 2006; 86: 245–278.
- 43 Tompkins DH, Besnard V, Lange AW, *et al.* Sox2 is required for maintenance and differentiation of bronchiolar Clara, ciliated, and goblet cells. *PLoS One* 2009; 4: e8248.
- 44 Reid CJ, Gould S, Harris A. Developmental expression of mucin genes in the human respiratory tract. *Am J Respir Cell Mol Biol* 1997; 17: 592–598.

- 45 Buisine MP, Devisme L, Copin MC, *et al.* Developmental mucin gene expression in the human respiratory tract. *Am J Respir Cell Mol Biol* 1999; 20: 209–218.
- 46 Roy MG, Rahmani M, Hernandez JR, *et al.* Mucin production during prenatal and postnatal murine lung development. *Am J Respir Cell Mol Biol* 2011; 44: 755–760.
- 47 Vincent A, Perrais M, Desseyn JL, *et al.* Epigenetic regulation (DNA methylation, histone modifications) of the 11p15 mucin genes (MUC2, MUC5AC, MUC5B, MUC6) in epithelial cancer cells. *Oncogene* 2007; 26: 6566–6576.
- 48 Perrais M, Pigny P, Buisine MP, *et al.* Aberrant expression of human mucin gene MUC5B in gastric carcinoma and cancer cells. Identification and regulation of a distal promoter. *J Biol Chem* 2001; 276: 15386–15396.
- 49 Ho JJ, Han SW, Pan PL, *et al.* Methylation status of promoters and expression of MUC2 and MUC5AC mucins in pancreatic cancer cells. *Int J Oncol* 2003; 22: 273–279.
- 50 Yuan S, Hollinger M, Lachowicz-Scroggins ME, *et al.* Oxidation increases mucin polymer cross-links to stiffen airway mucus gels. *Sci Transl Med* 2015; 7: 276ra227.
- 51 Lang T, Hansson GC, Samuelsson T. Gel-forming mucins appeared early in metazoan evolution. *Proc Natl Acad Sci USA* 2007; 104: 16209–16214.
- 52 Park SW, Zhen G, Verhaeghe C, *et al.* The protein disulfide isomerase AGR2 is essential for production of intestinal mucus. *Proc Natl Acad Sci USA* 2009; 106: 6950–6955.
- 53 Schroeder BW, Verhaeghe C, Park SW, *et al.* Agr2 is induced in asthma and promotes allergen-induced mucin overproduction. *Am J Respir Cell Mol Biol* 2012; 47: 178–185.
- 54 Guo X, Zheng S, Dang H, *et al.* Genome reference and sequence variation in the large repetitive central exon of human MUC5AC. *Am J Respir Cell Mol Biol* 2014; 50: 223–232.
- 55 Johansson ME, Phillipson M, Petersson J, *et al.* The inner of the two Muc2 mucin-dependent mucus layers in colon is devoid of bacteria. *Proc Natl Acad Sci USA* 2008; 105: 15064–15069.
- 56 Johansson ME, Sjovall H, Hansson GC. The gastrointestinal mucus system in health and disease. *Nat Rev Gastroenterol Hepatol* 2013; 10: 352–361.
- 57 Ambort D, van der Post S, Johansson ME, *et al.* Function of the CysD domain of the gel-forming MUC2 mucin. *Biochem J* 2011; 436: 61–70.
- 58 Nair GB, Ilowite JS. Pharmacologic agents for mucus clearance in bronchiectasis. *Clin Chest Med* 2012; 33: 363–370.
- 59 Decramer M, Janssens W. Mucoactive therapy in COPD. *Eur Respir Rev* 2010; 19: 134–140.
- 60 Balsamo R, Lanata L, Egan CG. Mucoactive drugs. *Eur Respir Rev* 2010; 19: 127–133.
- 61 Shuter J, Hatcher VB, Lowy FD. *Staphylococcus aureus* binding to human nasal mucin. *Infect Immun* 1996; 64: 310–318.
- 62 Scharfman A, Van Brussel E, Houdret N, *et al.* Interactions between glycoconjugates from human respiratory airways and *Pseudomonas aeruginosa*. *Am J Respir Crit Care Med* 1996; 154: S163–S169.
- 63 Juge N. Microbial adhesins to gastrointestinal mucus. *Trends Microbiol* 2012; 20: 30–39.
- 64 Davies J, Carlstedt I, Nilsson AK, *et al.* Binding of *Haemophilus influenzae* to purified mucins from the human respiratory tract. *Infect Immun* 1995; 63: 2485–2492.
- 65 Trivier D, Houdret N, Courcol RJ, *et al.* The binding of surface proteins from *Staphylococcus aureus* to human bronchial mucins. *Eur Respir J* 1997; 10: 804–810.
- 66 Linden S, Nordman H, Hedenbro J, *et al.* Strain- and blood group-dependent binding of *Helicobacter pylori* to human gastric MUC5AC glycoforms. *Gastroenterology* 2002; 123: 1923–1930.
- 67 Linden SK, Wickstrom C, Lindell G, *et al.* Four modes of adhesion are used during *Helicobacter pylori* binding to human mucins in the oral and gastric niches. *Helicobacter* 2008; 13: 81–93.
- 68 Marionneau S, Airaud F, Bovin NV, *et al.* Influence of the combined ABO, FUT2, and FUT3 polymorphism on susceptibility to Norwalk virus attachment. *J Infect Dis* 2005; 192: 1071–1077.
- 69 Marionneau S, Ruvoen N, Le Moullac-Vaidye B, *et al.* Norwalk virus binds to histo-blood group antigens present on gastroduodenal epithelial cells of secretor individuals. *Gastroenterology* 2002; 122: 1967–1977.
- 70 Huang P, Farkas T, Marionneau S, *et al.* Noroviruses bind to human ABO, Lewis, and secretor histo-blood group antigens: identification of 4 distinct strain-specific patterns. *J Infect Dis* 2003; 188: 19–31.
- 71 Linden S, Semino-Mora C, Liu H, *et al.* Role of mucin Lewis status in resistance to *Helicobacter pylori* infection in pediatric patients. *Helicobacter* 2010; 15: 251–258.
- 72 Celli JP, Turner BS, Afzal NH, *et al.* *Helicobacter pylori* moves through mucus by reducing mucin viscoelasticity. *Proc Natl Acad Sci USA* 2009; 106: 14321–14326.
- 73 Kawakubo M, Ito Y, Okimura Y, *et al.* Natural antibiotic function of a human gastric mucin against *Helicobacter pylori* infection. *Science* 2004; 305: 1003–1006.
- 74 Pacheco AR, Curtis MM, Ritchie JM, *et al.* Fucose sensing regulates bacterial intestinal colonization. *Nature* 2012; 492: 113–117.
- 75 Kerr SC, Fischer GJ, Sinha M, *et al.* Flea expression in *Aspergillus fumigatus* is recognized by fucosylated structures on mucins and macrophages to prevent lung infection. *PLoS Pathogens* 2016; 12: e1005555.
- 76 Okada SF, Zhang L, Kreda SM, *et al.* Coupled nucleotide and mucin hypersecretion from goblet-cell metaplastic human airway epithelium. *Am J Respir Cell Mol Biol* 2011; 45: 253–260.
- 77 Ehre C, Worthington EN, Liesman RM, *et al.* Overexpressing mouse model demonstrates the protective role of Muc5ac in the lungs. *Proc Natl Acad Sci USA* 2012; 109: 16528–16533.
- 78 Corfield AP, Berry M. Glycan variation and evolution in the eukaryotes. *Trends Biochem Sci* 2015; 40: 351–359.
- 79 Corfield AP. Mucins: a biologically relevant glycan barrier in mucosal protection. *Biochim Biophys Acta* 2015; 1850: 236–252.
- 80 Hanisch FG, Bonar D, Schloerer N, *et al.* Human trefoil factor 2 is a lectin that binds alpha-GlcNAc-capped mucin glycans with antibiotic activity against *Helicobacter pylori*. *J Biol Chem* 2014; 289: 27363–27375.
- 81 Tan L, Psaltis A, Baker LM, *et al.* Aberrant mucin glycoprotein patterns of chronic rhinosinusitis patients with bacterial biofilms. *Am J Rhinol Allergy* 2010; 24: 319–324.
- 82 Magalhaes A, Gomes J, Ismail MN, *et al.* Fut2-null mice display an altered glycosylation profile and impaired baba-mediated *Helicobacter pylori* adhesion to gastric mucosa. *Glycobiology* 2009; 19: 1525–1536.
- 83 Mata M, Sarrion I, Armengot M, *et al.* Respiratory syncytial virus inhibits ciliogenesis in differentiated normal human bronchial epithelial cells: effectiveness of N-acetylcysteine. *PLoS One* 2012; 7: e48037.

- 84 Oshansky CM, Pickens JA, Bradley KC, *et al.* Avian influenza viruses infect primary human bronchial epithelial cells unconstrained by sialic acid alpha2,3 residues. *PLoS One* 2011; 6: e21183.
- 85 Lachowicz-Scroggins ME, Boushey HA, Finkbeiner WE, *et al.* Interleukin-13-induced mucous metaplasia increases susceptibility of human airway epithelium to rhinovirus infection. *Am J Respir Cell Mol Biol* 2010; 43: 652–661.
- 86 Pittet LA, Hall-Stoodley L, Rutkowski MR, *et al.* Influenza virus infection decreases tracheal mucociliary velocity and clearance of *Streptococcus pneumoniae*. *Am J Respir Cell Mol Biol* 2010; 42: 450–460.
- 87 Winter C, Herrler G, Neumann U. Infection of the tracheal epithelium by infectious bronchitis virus is sialic acid dependent. *Microbes Infect* 2008; 10: 367–373.
- 88 Wu CA, Peluso JJ, Shanley JD, *et al.* Murine cytomegalovirus influences Foxj1 expression, ciliogenesis, and mucus plugging in mice with allergic airway disease. *Am J Pathol* 2008; 172: 714–724.
- 89 Thompson CI, Barclay WS, Zambon MC, *et al.* Infection of human airway epithelium by human and avian strains of influenza A virus. *J Virol* 2006; 80: 8060–8068.
- 90 Huang T, You Y, Spoor MS, *et al.* Foxj1 is required for apical localization of ezrin in airway epithelial cells. *J Cell Sci* 2003; 116: 4935–4945.
- 91 Look DC, Walter MJ, Williamson MR, *et al.* Effects of paramyxoviral infection on airway epithelial cell Foxj1 expression, ciliogenesis, and mucociliary function. *Am J Pathol* 2001; 159: 2055–2069.
- 92 Zaynagetdinov R, Sherrill TP, Kendall PL, *et al.* Identification of myeloid cell subsets in murine lungs using flow cytometry. *Am J Respir Cell Mol Biol* 2013; 49: 180–189.
- 93 Desch AN, Gibbings SL, Goyal R, *et al.* Flow cytometric analysis of mononuclear phagocytes in nondiseased human lung and lung-draining lymph nodes. *Am J Respir Crit Care Med* 2016; 193: 614–626.
- 94 Heron M, Grutters JC, ten Dam-Molenkamp KM, *et al.* Bronchoalveolar lavage cell pattern from healthy human lung. *Clin Exp Immunol* 2012; 167: 523–531.
- 95 Lensmar C, Elmberger G, Sandgren P, *et al.* Leukocyte counts and macrophage phenotypes in induced sputum and bronchoalveolar lavage fluid from normal subjects. *Eur Respir J* 1998; 12: 595–600.
- 96 Hashimoto D, Chow A, Noizat C, *et al.* Tissue-resident macrophages self-maintain locally throughout adult life with minimal contribution from circulating monocytes. *Immunity* 2013; 38: 792–804.
- 97 Williams M, De Kleer I, Henri S, *et al.* Alveolar macrophages develop from fetal monocytes that differentiate into long-lived cells in the first week of life via GM-CSF. *J Exp Med* 2013; 210: 1977–1992.
- 98 Epelman S, Lavine KJ, Randolph GJ. Origin and functions of tissue macrophages. *Immunity* 2014; 41: 21–35.
- 99 Cogle JE, Tarling JD. The proliferation kinetics of pulmonary alveolar macrophages. *J Leukoc Biol* 1984; 35: 317–327.
- 100 Tarling JD, Cogle JE. Evidence for the pulmonary origin of alveolar macrophages. *Cell Tissue Kinet* 1982; 15: 577–584.
- 101 Sawyer RT. The significance of local resident pulmonary alveolar macrophage proliferation to population renewal. *J Leukoc Biol* 1986; 39: 77–87.
- 102 Jenkins SJ, Ruckerl D, Cook PC, *et al.* Local macrophage proliferation, rather than recruitment from the blood, is a signature of TH2 inflammation. *Science* 2011; 332: 1284–1288.
- 103 Janssen WJ, Barthel L, Muldrow A, *et al.* Fas determines differential fates of resident and recruited macrophages during resolution of acute lung injury. *Am J Respir Crit Care Med* 2011; 184: 547–560.
- 104 Thepen T, Van Rooijen N, Kraal G. Alveolar macrophage elimination *in vivo* is associated with an increase in pulmonary immune response in mice. *J Exp Med* 1989; 170: 499–509.
- 105 Thepen T, Hoebe K, Breve J, *et al.* Alveolar macrophages down-regulate local pulmonary immune responses against intratracheally administered T-cell-dependent, but not T-cell-independent antigens. *Immunology* 1992; 76: 60–64.
- 106 Bang BR, Chun E, Shim EJ, *et al.* Alveolar macrophages modulate allergic inflammation in a murine model of asthma. *Exp Mol Med* 2011; 43: 275–280.
- 107 Kooguchi K, Hashimoto S, Kobayashi A, *et al.* Role of alveolar macrophages in initiation and regulation of inflammation in *Pseudomonas aeruginosa* pneumonia. *Infect Immun* 1998; 66: 3164–3169.
- 108 Holt PG. Down-regulation of immune responses in the lower respiratory tract: the role of alveolar macrophages. *Clin Exp Immunol* 1986; 63: 261–270.
- 109 Zaslona Z, Przybranowski S, Wilke C, *et al.* Resident alveolar macrophages suppress, whereas recruited monocytes promote, allergic lung inflammation in murine models of asthma. *J Immunol* 2014; 193: 4245–4253.
- 110 Broug-Holub E, Toews GB, van Iwaarden JF, *et al.* Alveolar macrophages are required for protective pulmonary defenses in murine *Klebsiella pneumoniae*: elimination of alveolar macrophages increases neutrophil recruitment but decreases bacterial clearance and survival. *Infect Immun* 1997; 65: 1139–1146.
- 111 Machado-Aranda D, V Suresh M, Yu B, *et al.* Alveolar macrophage depletion increases the severity of acute inflammation following nonlethal unilateral lung contusion in mice. *J Trauma Acute Care Surg* 2014; 76: 982–990.
- 112 Elder A, Johnston C, Gelein R, *et al.* Lung inflammation induced by endotoxin is enhanced in rats depleted of alveolar macrophages with aerosolized clodronate. *Exp Lung Res* 2005; 31: 527–546.
- 113 Qiu H, KuoLee R, Harris G, *et al.* Role of macrophages in early host resistance to respiratory *Acinetobacter baumannii* infection. *PLoS One* 2012; 7: e40019.
- 114 Conner SD, Schmid SL. Regulated portals of entry into the cell. *Nature* 2003; 422: 37–44.
- 115 Kumari S, Mg S, Mayor S. Endocytosis unplugged: multiple ways to enter the cell. *Cell Res* 2010; 20: 256–275.
- 116 Doyle SE, O'Connell RM, Miranda GA, *et al.* Toll-like receptors induce a phagocytic gene program through p38. *J Exp Med* 2004; 199: 81–90.
- 117 Blander JM, Medzhitov R. Regulation of phagosome maturation by signals from toll-like receptors. *Science* 2004; 304: 1014–1018.
- 118 Kong L, Ge BX. Myd88-independent activation of a novel actin-Cdc42/Rac pathway is required for Toll-like receptor-stimulated phagocytosis. *Cell Res* 2008; 18: 745–755.
- 119 Kotlar HK, Harbitz O, Jenssen AO, *et al.* Quantitation of proteins in sputum from patients with chronic obstructive lung disease. II. Determination of albumin, transferrin, alpha1-acid glycoprotein, IgG, IgM, lysozyme and C3-complement factor. *Eur J Respir Dis* 1980; 61: 233–239.
- 120 Hill SL, Mitchell JL, Burnett D, *et al.* IgG subclasses in the serum and sputum from patients with bronchiectasis. *Thorax* 1998; 53: 463–468.

- 121 Sloane AJ, Lindner RA, Prasad SS, *et al.* Proteomic analysis of sputum from adults and children with cystic fibrosis and from control subjects. *Am J Respir Crit Care Med* 2005; 172: 1416–1426.
- 122 Aitken ML, Greene KE, Tonelli MR, *et al.* Analysis of sequential aliquots of hypertonic saline solution-induced sputum from clinically stable patients with cystic fibrosis. *Chest* 2003; 123: 792–799.
- 123 Wright SM, Hockey PM, Enhorning G, *et al.* Altered airway surfactant phospholipid composition and reduced lung function in asthma. *J Appl Physiol* (1985) 2000; 89: 1283–1292.
- 124 Shimura S, Masuda T, Takishima T, *et al.* Surfactant apoprotein-A concentration in airway secretions for the detection of pulmonary oedema. *Eur Respir J* 1996; 9: 2525–2530.
- 125 Masuda T, Shimura S, Sasaki H, *et al.* Surfactant apoprotein-A concentration in sputum for diagnosis of pulmonary alveolar proteinosis. *Lancet* 1991; 337: 580–582.
- 126 Peebles RS Jr, Liu MC, Lichtenstein LM, *et al.* IgA, IgG and IgM quantification in bronchoalveolar lavage fluids from allergic rhinitics, allergic asthmatics, and normal subjects by monoclonal antibody-based immunoenzymetric assays. *J Immunol Methods* 1995; 179: 77–86.
- 127 Sato T, Kitajima A, Ohmoto S, *et al.* Determination of human immunoglobulin A and secretory immunoglobulin A in bronchoalveolar lavage fluids by solid phase enzyme immunoassay. *Clin Chim Acta* 1993; 220: 145–156.
- 128 Bakema JE, van Egmond M. The human immunoglobulin A Fc receptor Fc α RI: a multifaceted regulator of mucosal immunity. *Mucosal Immunol* 2011; 4: 612–624.
- 129 Arnold JN, Wormald MR, Sim RB, *et al.* The impact of glycosylation on the biological function and structure of human immunoglobulins. *Annu Rev Immunol* 2007; 25: 21–50.
- 130 Wolfert MA, Boons G-J. Adaptive immune activation: glycosylation does matter. *Nat Chem Biol* 2013; 9: 776–784.
- 131 Crook CK, Lipsitt LP. Neonatal nutritive sucking: effects of taste stimulation upon sucking rhythm and heart rate. *Child Dev* 1976; 47: 518–522.
- 132 Pelaseyed T, Bergstrom JH, Gustafsson JK, *et al.* The mucus and mucins of the goblet cells and enterocytes provide the first defense line of the gastrointestinal tract and interact with the immune system. *Immunol Rev* 2014; 260: 8–20.
- 133 Watford WT, Ghio AJ, Wright JR. Complement-mediated host defense in the lung. *Am J Physiol Lung Cell Mol Physiol* 2000; 279: L790–L798.
- 134 Reynolds HY, Newball HH. Analysis of proteins and respiratory cells obtained from human lungs by bronchial lavage. *J Lab Clin Med* 1974; 84: 559–573.
- 135 Robertson J, Caldwell JR, Castle JR, *et al.* Evidence for the presence of components of the alternative (properdin) pathway of complement activation in respiratory secretions. *J Immunol* 1976; 117: 900–903.
- 136 Nayak A, Ferluga J, Tsolaki AG, *et al.* The non-classical functions of the classical complement pathway recognition subcomponent C1q. *Immunol Lett* 2010; 131: 139–150.
- 137 Nayak A, Pednekar L, Reid KB, *et al.* Complement and non-complement activating functions of C1q: a prototypical innate immune molecule. *Innate Immun* 2012; 18: 350–363.
- 138 Ehlers MR. Cr3: a general purpose adhesion-recognition receptor essential for innate immunity. *Microbes Infect* 2000; 2: 289–294.
- 139 Gasque P. Complement: a unique innate immune sensor for danger signals. *Mol Immunol* 2004; 41: 1089–1098.
- 140 Ross GD, Cain JA, Lachmann PJ. Membrane complement receptor type three (Cr3) has lectin-like properties analogous to bovine conglutinin as functions as a receptor for zymosan and rabbit erythrocytes as well as a receptor for iC3b. *J Immunol* 1985; 134: 3307–3315.
- 141 Thornton BP, Vetvicka V, Pitman M, *et al.* Analysis of the sugar specificity and molecular location of the beta-glucan-binding lectin site of complement receptor type 3 (CD11b/CD18). *J Immunol* 1996; 156: 1235–1246.
- 142 Troelstra A, de Graaf-Miltenburg LA, van Bommel T, *et al.* Lipopolysaccharide-coated erythrocytes activate human neutrophils via CD14 while subsequent binding is through CD11b/CD18. *J Immunol* 1999; 162: 4220–4225.
- 143 Sutterwala FS, Rosenthal LA, Mosser DM. Cooperation between CR1 (CD35) and CR3 (CD11b/CD18) in the binding of complement-opsonized particles. *J Leukoc Biol* 1996; 59: 883–890.
- 144 van Egmond M, van Vuuren AJ, Morton HC, *et al.* Human immunoglobulin A receptor (FcaRI, CD89) function in transgenic mice requires both FcR gamma chain and CR3 (CD11b/CD18). *Blood* 1999; 93: 4387–4394.
- 145 Rijnveld AW, de Vos AF, Florquin S, *et al.* CD11b limits bacterial outgrowth and dissemination during murine pneumococcal pneumonia. *J Infect Dis* 2005; 191: 1755–1760.
- 146 Agramonte-Hevia J, Gonzalez-Arenas A, Barrera D, *et al.* Gram-negative bacteria and phagocytic cell interaction mediated by complement receptor 3. *FEMS Immunol Med Microbiol* 2002; 34: 255–266.
- 147 Humbles AA, Lu B, Nilsson CA, *et al.* A role for the C3a anaphylatoxin receptor in the effector phase of asthma. *Nature* 2000; 406: 998–1001.
- 148 Wu J, Kobayashi M, Sousa EA, *et al.* Differential proteomic analysis of bronchoalveolar lavage fluid in asthmatics following segmental antigen challenge. *Mol Cellular Proteomics* 2005; 4: 1251–1264.
- 149 Dillard P, Wetsel RA, Drouin SM. Complement C3a regulates Muc5ac expression by airway Clara cells independently of Th2 responses. *Am J Respir Crit Care Med* 2007; 175: 1250–1258.
- 150 Zelensky AN, Gready JE. The C-type lectin-like domain superfamily. *FEBS J* 2005; 272: 6179–6217.
- 151 Kishore U, Greenhough TJ, Waters P, *et al.* Surfactant proteins SP-A and SP-D: structure, function and receptors. *Mol Immunol* 2006; 43: 1293–1315.
- 152 Kuronuma K, Sano H, Kato K, *et al.* Pulmonary surfactant protein A augments the phagocytosis of *Streptococcus pneumoniae* by alveolar macrophages through a casein kinase 2-dependent increase of cell surface localization of scavenger receptor A. *J Biol Chem* 2004; 279: 21421–21430.
- 153 Watford WT, Smithers MB, Frank MM, *et al.* Surfactant protein A enhances the phagocytosis of C1q-coated particles by alveolar macrophages. *Am J Physiol Lung Cell Mol Physiol* 2002; 283: L1011–L1022.
- 154 Gil M, McCormack FX, Levine AM. Surfactant protein A modulates cell surface expression of CR3 on alveolar macrophages and enhances CR3-mediated phagocytosis. *J Biol Chem* 2009; 284: 7495–7504.
- 155 Beharka AA, Crowther JE, McCormack FX, *et al.* Pulmonary surfactant protein A activates a phosphatidylinositol 3-kinase/calcium signal transduction pathway in human macrophages: participation in the up-regulation of mannose receptor activity. *J Immunol* 2005; 175: 2227–2236.
- 156 Beharka AA, Gaynor CD, Kang BK, *et al.* Pulmonary surfactant protein A up-regulates activity of the mannose receptor, a pattern recognition receptor expressed on human macrophages. *J Immunol* 2002; 169: 3565–3573.

- 157 Kudo K, Sano H, Takahashi H, *et al.* Pulmonary collectins enhance phagocytosis of *Mycobacterium avium* through increased activity of mannose receptor. *J Immunol* 2004; 172: 7592–7602.
- 158 Kerrigan AM, Brown GD. C-type lectins and phagocytosis. *Immunobiology* 2009; 214: 562–575.
- 159 Le Cabec V, Emorine LJ, Toesca I, *et al.* The human macrophage mannose receptor is not a professional phagocytic receptor. *J Leukoc Biol* 2005; 77: 934–943.
- 160 Brown GD, Taylor PR, Reid DM, *et al.* Dectin-1 is a major beta-glucan receptor on macrophages. *J Exp Med* 2002; 196: 407–412.
- 161 Brown GD, Herre J, Williams DL, *et al.* Dectin-1 mediates the biological effects of beta-glucans. *J Exp Med* 2003; 197: 1119–1124.
- 162 Brown GD, Gordon S. Immune recognition. A new receptor for beta-glucans. *Nature* 2001; 413: 36–37.
- 163 Diniz SN, Nomizo R, Cisalpino PS, *et al.* PTX3 function as an opsonin for the dectin-1-dependent internalization of zymosan by macrophages. *J Leukoc Biol* 2004; 75: 649–656.
- 164 Pilishvili T, Bennett NM. Pneumococcal disease prevention among adults: strategies for the use of pneumococcal vaccines. *Vaccine* 2015; 33: Suppl. 4, D60–D65.
- 165 Schwitzguebel AJ, Jandus P, Lacroix JS, *et al.* Immunoglobulin deficiency in patients with chronic rhinosinusitis: systematic review of the literature and meta-analysis. *J Allergy Clin Immunol* 2015; 136: 1523–1531.
- 166 Gathmann B, Mahlaoui N, Gerard L, *et al.* Clinical picture and treatment of 2212 patients with common variable immunodeficiency. *J Allergy Clin Immunol* 2014; 134: 116–126.
- 167 Oksenhendler E, Gerard L, Fieschi C, *et al.* Infections in 252 patients with common variable immunodeficiency. *Clin Infect Dis* 2008; 46: 1547–1554.
- 168 Kainulainen L, Suonpaa J, Nikoskelainen J, *et al.* Bacteria and viruses in maxillary sinuses of patients with primary hypogammaglobulinemia. *Arch Otolaryngol Head Neck Surg* 2007; 133: 597–602.
- 169 Busse PJ, Farzan S, Cunningham-Rundles C. Pulmonary complications of common variable immunodeficiency. *Ann Allergy Asthma Immunol* 2007; 98: 1–8; quiz 8–11, 43.
- 170 Kainulainen L, Varpula M, Liippo K, *et al.* Pulmonary abnormalities in patients with primary hypogammaglobulinemia. *J Allergy Clin Immunol* 1999; 104: 1031–1036.
- 171 Cunningham-Rundles C, Bodian C. Common variable immunodeficiency: clinical and immunological features of 248 patients. *Clin Immunol* 1999; 92: 34–48.
- 172 Fitzpatrick AM, Holguin F, Teague WG, *et al.* Alveolar macrophage phagocytosis is impaired in children with poorly controlled asthma. *J Allergy Clin Immunol* 2008; 121: 1372–1378.
- 173 Berenson CS, Garlipp MA, Grove LJ, *et al.* Impaired phagocytosis of nontypeable *Haemophilus influenzae* by human alveolar macrophages in chronic obstructive pulmonary disease. *J Infect Dis* 2006; 194: 1375–1384.
- 174 Taylor AE, Finney-Hayward TK, Quint JK, *et al.* Defective macrophage phagocytosis of bacteria in COPD. *Eur Respir J* 2010; 35: 1039–1047.
- 175 Marti-Llitas P, Regueiro V, Morey P, *et al.* Nontypeable *Haemophilus influenzae* clearance by alveolar macrophages is impaired by exposure to cigarette smoke. *Infect Immun* 2009; 77: 4232–4242.
- 176 Berenson CS, Kruzel RL, Eberhardt E, *et al.* Phagocytic dysfunction of human alveolar macrophages and severity of chronic obstructive pulmonary disease. *J Infect Dis* 2013; 208: 2036–2045.
- 177 Alexis NE, Soukup J, Nierkens S, *et al.* Association between airway hyperreactivity and bronchial macrophage dysfunction in individuals with mild asthma. *Am J Physiol Lung Cell Mol Physiol* 2001; 280: L369–L375.
- 178 Donnelly LE, Barnes PJ. Defective phagocytosis in airways disease. *Chest* 2012; 141: 1055–1062.
- 179 Lehnert BE. Pulmonary and thoracic macrophage subpopulations and clearance of particles from the lung. *Environ Health Perspect* 1992; 97: 17–46.
- 180 Lehnert BE, Valdez YE, Sebring RJ, *et al.* Airway intra-luminal macrophages: evidence of origin and comparisons to alveolar macrophages. *Am J Respir Cell Mol Biol* 1990; 3: 377–391.
- 181 Lehnert BE, Morrow PE. Association of 59-iron oxide with alveolar macrophages during alveolar clearance. *Exp Lung Res* 1985; 9: 1–16.
- 182 Lehnert BE, Valdez YE, Holland LM. Pulmonary macrophages: alveolar and interstitial populations. *Exp Lung Res* 1985; 9: 177–190.
- 183 Warheit DB, Hill LH, Brody AR. Surface morphology and correlated phagocytic capacity of pulmonary macrophages lavaged from the lungs of rats. *Exp Lung Res* 1984; 6: 71–82.
- 184 Yeh HC, Schum GM, Duggan MT. Anatomic models of the tracheobronchial and pulmonary regions of the rat. *Anat Rec* 1979; 195: 483–492.
- 185 Sorokin SP, Brain JD. Pathways of clearance in mouse lungs exposed to iron oxide aerosols. *Anat Rec* 1975; 181: 581–625.
- 186 Westphalen K, Gusarova GA, Islam MN, *et al.* Sessile alveolar macrophages communicate with alveolar epithelium to modulate immunity. *Nature* 2014; 506: 503–506.
- 187 Shan M, Gentile M, Yeiser JR, *et al.* Mucus enhances gut homeostasis and oral tolerance by delivering immunoregulatory signals. *Science* 2013; 342: 447–453.
- 188 McDole JR, Wheeler LW, McDonald KG, *et al.* Goblet cells deliver luminal antigen to CD103+ dendritic cells in the small intestine. *Nature* 2012; 483: 345–349.
- 189 Patnode ML, Cheng CW, Chou CC, *et al.* Galactose-6-O-sulfotransferases are not required for the generation of Siglec-F ligands in leukocytes or lung tissue. *J Biol Chem* 2013; 288: 26533–26545.
- 190 Kiwamoto T, Katoh T, Evans CM, *et al.* Endogenous airway mucins carry glycans that bind Siglec-F and induce eosinophil apoptosis. *J Allergy Clin Immunol* 2015; 135: 1329–1340.
- 191 Mao H, Kano G, Hudson SA, *et al.* Mechanisms of Siglec-F-induced eosinophil apoptosis: a role for caspases but not for SHP-1, Src kinases, NADPH oxidase or reactive oxygen. *PLoS One* 2013; 8: e68143.
- 192 Zimmermann N, McBride ML, Yamada Y, *et al.* Siglec-F antibody administration to mice selectively reduces blood and tissue eosinophils. *Allergy* 2008; 63: 1156–1163.
- 193 Song DJ, Cho JY, Lee SY, *et al.* Anti-Siglec-F antibody reduces allergen-induced eosinophilic inflammation and airway remodeling. *J Immunol* 2009; 183: 5333–5341.
- 194 Guo JP, Myers AC, Choi O, *et al.* Ligands for Siglec-8 and Siglec-F: binding characteristics and tissue distribution. *J Allergy Clin Immunol* 119: S299.

- 195 Kiwamoto T, Brummet ME, Wu F, *et al.* Mice deficient in the St3gal3 gene product α 2,3 sialyltransferase (ST3Gal-III) exhibit enhanced allergic eosinophilic airway inflammation. *J Allergy Clin Immunol* 2014; 133: 240–247.
- 196 Suzukawa M, Miller M, Rosenthal P, *et al.* Sialyltransferase ST3Gal-III regulates Siglec-F ligand formation and eosinophilic lung inflammation in mice. *J Immunol* 2013; 190: 5939–5948.
- 197 Zhang M, Angata T, Cho JY, *et al.* Defining the *in vivo* function of Siglec-F, a CD33-related Siglec expressed on mouse eosinophils. *Blood* 2007; 109: 4280–4287.
- 198 Cho JY, Song DJ, Pham A, *et al.* Chronic ova allergen challenged Siglec-F deficient mice have increased mucus, remodeling, and epithelial Siglec-F ligands which are up-regulated by IL-4 and IL-13. *Respir Res* 2010; 11: 154.
- 199 Jia Y, Yu H, Fernandes SM, *et al.* Expression of ligands for Siglec-8 and Siglec-9 in human airways and airway cells. *J Allergy Clin Immunol* 2015; 135: 799–810.
- 200 Kano G, Almanan M, Bochner BS, *et al.* Mechanism of Siglec-8-mediated cell death in IL-5-activated eosinophils: role for reactive oxygen species-enhanced MEK/ERK activation. *J Allergy Clin Immunol* 2013; 132: 437–445.
- 201 Nutku E, Aizawa H, Hudson SA, *et al.* Ligation of Siglec-8: a selective mechanism for induction of human eosinophil apoptosis. *Blood* 2003; 101: 5014–5020.