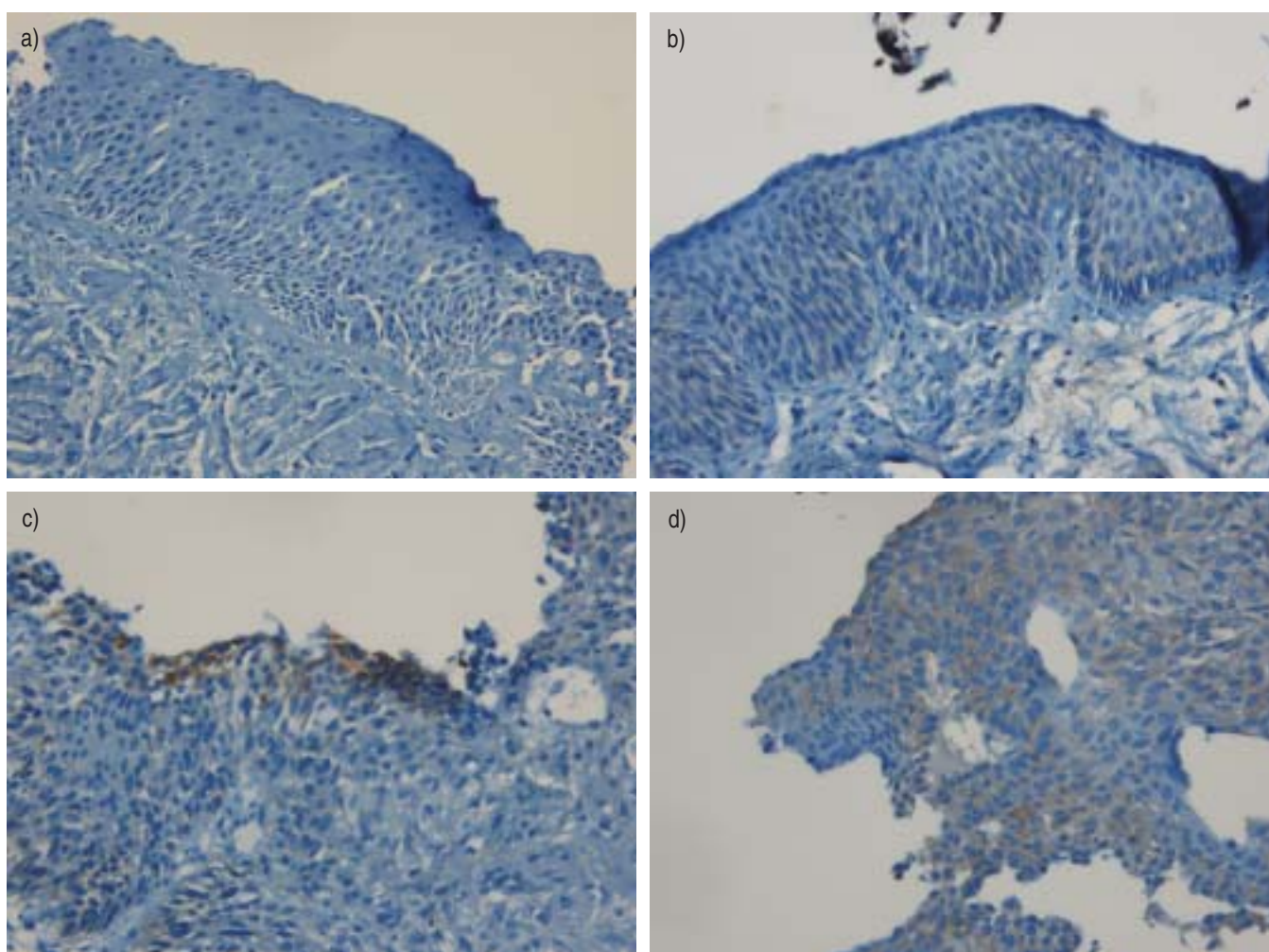




## AUTHOR CORRECTION

**“COX-2 EXPRESSION DURING EARLY LUNG SQUAMOUS CELL CARCINOMA ONCOGENESIS”. C. MASCAUX, B. MARTIN, J-M. VERDEBOUT, V. NINANE AND J-P. SCULIER. *EUR RESPIR J* 2005; 26: 198–203.**

Unfortunately, figure 1 in the above paper was printed incorrectly and should have appeared as follows.



**FIGURE 1.** Immunohistochemical staining scores showing a) 0: no staining, b) 1+ positive: diffuse weak staining, c) 2+ positive: focal strong staining, and d) 3+ positive: diffuse moderate staining.