

Forced spirometry reference values for Norwegian adults: the Bronchial Obstruction in Nord-Trøndelag study

A. Langhammer*, R. Johnsen[#], A. Gulsvik[†], T.L. Holmen*, L. Bjermer⁺

Forced spirometry reference values for Norwegian adults: the Bronchial Obstruction in Nord-Trøndelag study. A. Langhammer, R. Johnsen, A. Gulsvik, T.L. Holmen, L. Bjermer. ©ERS Journals Ltd 2001.

ABSTRACT: The purpose of this study was to develop new prediction equations for flow/volume spirometry parameters in asymptomatic, never-smoking adults in Norway, and to assess any differences of these parameters when applying the new and most commonly used equation sets.

Flow/volume spirometry was measured according to the American Thoracic Society criteria in 2,792 subjects aged ≥ 20 yrs, randomly selected from participants in the Nord-Trøndelag Health Study. Ever-smokers and subjects with respiratory symptoms and/or diseases reported in this questionnaire were excluded. A total of 546 females and 362 males met the inclusion criteria and were included in the analyses.

Most lung function variables were nonlinear by age and had to be transformed. After a plateau in younger adults, the variables declined by age. The reference values for forced expiratory volume in one second and forced vital capacity from the present study, were higher than those given by prediction equations from the European Community for Coal and Steel, but in closer agreement with later studies from Europe, Australia and the USA.

Healthcare providers should be encouraged to reconsider their choice of prediction equations of spirometry in order to improve management of obstructive lung diseases. *Eur Respir J 2001; 18: 770–779.*

*The Nord-Trøndelag Health Study (HUNT) Research Centre, The Norwegian University of Science and Technology (NTNU), Verdal, [#]Institute of Community Medicine and General Practice, NTNU, Trondheim, [†]Dept of Thoracic Medicine, University of Bergen, Bergen, ⁺Dept of Pulmonary Medicine, NTNU, Trondheim, Norway.

Correspondence: A. Langhammer, The Nord-Trøndelag Health Study Research Centre, The Norwegian University of Science and Technology, Neptunveien 1, N-7650 Verdal, Norway.
Fax: 47 74075181

Keywords: Adults
forced expiratory volume in one second
forced spirometry
forced vital capacity
reference values

Received: January 30 2001
Accepted after revision July 3 2001

The Bronchial Obstruction in Nord-Trøndelag study was funded by Astra-Zeneca Norway and The Norwegian Research Council.

Studies on spirometric reference values have demonstrated substantial differences in both predicted forced vital capacity (FVC) and forced expiratory volume in one second (FEV₁) [1]. Even though prediction equations for FEV₁ and FVC have previously been developed in Scandinavia [2–6], the prediction equations from the European Community for Coal and Steel (ECCS) [7] are more commonly used in Norway. Several studies have indicated that these equations significantly underestimate predicted FEV₁ and FVC [8–11], which was confirmed by the European Community Respiratory Health Survey (ECRHS) [1]. As general health status, lung function and measurement devices are subject to cohort effect, regular review of reference equations has been recommended [8]. Previous Scandinavian prediction equations were linear [2, 6] and, therefore, did not reflect accelerating decline by age. They included smokers [2], or a limited number of never-smokers [4, 5], and presented limited data from the elderly [11–14]. Literature on flow/volume area under curve (AUC) from population studies has not previously been found, and is therefore included in this study.

The aim of this study was to establish new Norwegian reference prediction equations for lung parameters, such as FVC, FEV₁, peak expiratory flow (PEF), forced mid-expiratory flow, (FEF_{25%–75%}) and AUC, in subjects aged 20–80 yrs. In addition, the authors have assessed differences in lung function parameters using the new prediction equations, those from the ECCS [7] and other equations from Caucasians in different parts of the world [9, 10, 15–18].

Method

Subjects

During 1995–1997, all residents of the Nord-Trøndelag County aged ≥ 20 yrs (n=92,434), were invited to participate in the adult part of The Nord-Trøndelag Health Study (HUNT) [19]. The county is situated in a central area of Norway, and 97% of the residents are of Caucasian origin. Apart from not having a large city, the geographical and

demographical structure of the Nord-Trøndelag County is fairly representative of Norway as a whole [20]. The education and income level and the prevalence of current smokers are slightly lower than the average for Norway [21], but the sale of antiasthmatic drugs is close to the Norwegian average [22]. From 65,225 subjects (71% of those invited) who attended the primary screening, a randomly selected sample of 5% ($n=3,297$) was invited to phase one of the Bronchial Obstruction in Nord-Trøndelag (BONT) study. This consisted of flow/volume spirometry and an interview with a nurse. In total, 2,792 subjects participated.

Spirometric measurements and quality control

Staff, consisting of 19 nurses and technicians organized into two teams, performed the flow/volume spirometry and the interview. Team I covered the five most densely inhabited municipalities (58,805 inhabitants) and team II covered the 18 smaller municipalities (33,629 inhabitants).

Flow/volume spirometry was recorded with three pneumotachographs (MasterScope spirometer, version 4.15, Erich Jaeger GmbH, Wuerzburg, Germany). The instruments were calibrated twice daily with a 1 L syringe. The staff also performed a daily biological control by assessing their own lung function. The participants were seated and wore a noseclip, and extension or flexion of the neck was avoided. Height and weight were measured barefoot and in light clothing with standardized equipment. Barometer pressure, temperature and relative humidity were registered every morning, and the integrated volumes were automatically converted from ambient temperature and pressure to body temperature and pressure, saturated conditions.

The staff initially went through formal training and were then continuously monitored during the entire study by the head of the project. In accordance with the 1994 American Thoracic Society (ATS) recommendations [23], they were taught to instruct the subjects to perform three acceptable and reproducible manoeuvres, ensuring that the subjects produced the highest possible peak flows and that the expiration continued for ≥ 6 s. If the subjects were unable to do this, up to five manoeuvres were performed. The flow/volume curve with the highest sum of FEV₁ and FVC was retained. The computer provided the technicians with feedback as to whether the acceptability and reproducibility criteria were met. The error messages given were in accordance with the 1987 ATS recommendations, with a reproducibility criteria of <100 mL or 5% difference between FEV₁ and FVC in the two best tests, and a lower limit back extrapolated volume of 100 mL [24]. In the 1994 ATS recommendations, these limits were 200 mL and 150 mL, respectively [23].

Reference sample

The reference sample was selected from the 5% randomized sample ($n=2,792$), based on questionnaire

results. The selection criteria followed ATS recommendations [8]: 1) life-time never-smokers; 2) no respiratory disease (self-reported or medical doctor diagnosed asthma, emphysema or chronic bronchitis); and 3) no reported respiratory symptoms (wheezing or breathlessness during the last 12 months, persistent coughing or complaints of breathlessness for any reason).

Prediction equations and statistics

Sex-specific multiple linear regressions of lung function on height, age, weight, and body mass index (BMI) in various powers and interactions were performed. Statistical significance and fraction of explained variability were the main criteria for selecting independent variables and transforming lung function variables. Independent variables were centred (*i.e.* observed values minus variable mean) in the regressions for selection of the best model in order to reduce collinearity among higher order and cross-product terms. The assumptions of linearity and homoscedasticity were controlled.

The selection of prediction equations for comparison was based on common use [7, 15, 18], use of nonlinear equations [9, 10, 17] and inclusion of the elderly [12]. The differences between predicted values based on the prediction equations from the present study and others are given as Bland Altman plots, whilst the differences between observed values and values predicted by the prediction equations are given as mean difference in per cent of mean observed values and mean squared difference.

Comparisons of lung function between the groups were performed by analysis of variance, adjusting for covariates. A p-value of <0.05 was considered statistically significant.

Results

Participants

After the exclusion of previous and current smokers, and those reporting respiratory symptoms or disease [8], a total of 546 females and 362 males aged 20–80 yrs were included in the reference sample (tables 1 and 2). Subjects with adiposity or a low score for global health questions were not excluded, as this did not significantly influence the parameters (data not shown).

Quality control

The staff. The nurses/technicians assessed their lung function on the days that they worked at the spirometry stations. A total of 975 such flow/volume assessments were recorded by 19 nurses/technicians. When three nurses with known asthma were excluded, the intra-individual coefficient of variation ($=100 \times \text{SD}$ divided by the mean) of FEV₁ during the 2-yr survey period varied from 2.6–5.5%, with 4.0% as the mean.

Table 1. – The reference sample selected according to American Thoracic Society criteria, included 1,282 males (M) and 1,510 females (F), and represented the 5% random sample of the total population

Criteria	Prevalence %		Number excluded		Number remaining	
	M	F	M	F	M	F
Unacceptable spirometry	2.7	2.6	34	52	1248	1458
Exsmokers	29.3	18.9	374	287	874	1171
Current smokers	29.5	30.0	375	449	499	722
MD diagnosis of asthma	5.1	5.4	22	40	477	682
MD diagnosis of chronic bronchitis	3.9	2.3	5	8	472	674
Self-reported ever-asthma	8.5	8.5	17	14	455	660
Wheezing or breathlessness during last 12 months	13.3	12.3	29	35	426	625
Persistent cough	17.0	15.2	52	52	374	573
Difficulty in breathing of any cause	7.8	7.5	10	18	365	555
Age >80 yrs	2.0	2.4	3	9	362	546

MD: Doctor of Medicine.

The study population. When using the 1987 ATS recommendations, 12.7% of females and 7.7% of males failed to meet the FEV₁ reproducibility criteria. In contrast, 6.8% of females and 7.1% of males failed to meet the criteria when the 1994 ATS recommendations were applied.

With the inclusion of the whole study sample (n=2,792), the comparison between the two test teams of the mean FEV₁ and FVC showed only minor differences, 1.4% and 0.8% for FEV₁ and FVC, respectively (adjusted for age, sex, height, and pack-yrs).

Prediction equations

Scrutinizing the plots, most lung function variables were nonlinear with age and showed a plateau in younger adults with a decline after the age of 35–40 yrs. Exploring the regression models, square age and ln(height) were found to contribute significantly to the explained variance of all lung function parameters, except FEV₁/FVC.

The prediction equations for the means were developed by regressing the natural logarithms of lung function variables against ln(height), square age, and age, as performed in the Swiss Study on Air Pollution and Lung Diseases in Adults [10, 25]. The

Table 2. – Sex and age distribution in the 20–80 yrs age group of the reference sample and the total population

Age yrs	Reference sample		Total population [#]	
	M	F	M %	F %
20–29	73 (20.1)	76 (13.9)	21.5	23.2
30–39	91 (25.1)	86 (15.7)	18.7	19.5
40–49	72 (19.8)	91 (16.6)	19.6	20.4
50–59	66 (18.2)	117 (21.4)	14.6	14.8
60–69	33 (9.1)	77 (14.1)	12.5	11.6
70–80	27 (7.4)	99 (18.1)	12.8	10.3
Total	362 (100)	546 (100)	100	100

Data are presented as n (%) unless otherwise stated. M: males; F: females. [#]: per cent of 43,789 females and 44,811 males.

use of natural logarithms and square age improved the explained variance by 1–2%, compared to linear models (table 3). Separate equations were tested in males under and over the age of 25 yrs [7, 10], but polynomial regression equations provided a significantly better fit than linear regressions with break-points [17, 26].

No significant interaction between age and height was found. Weight, weight² and BMI were significant parameters for FEV₁ and FVC when included in the models, but they were not included in the final prediction equations as this increased the adjusted explained variance by <1%, and these measures are less reliable than height [25].

The distributions of FEV₁, FVC, PEF and FEF_{25%–75%} were similar to the Gaussian distribution, and the assumptions of homoscedasticity were met. Therefore, one-sided lower 95% prediction intervals were used to determine the lower limit of normal lung functions [7, 26] (table 3).

From the age of 35–39 yrs, FEV₁, FVC, AUC and FEF_{25%–75%} declined with age (figs. 1 and 2). For both FEV₁ and FVC, regression coefficients for age decreased with increasing age, whereas, with regard to the regression coefficients for height, no significant change was found with age except for higher coefficients in the youngest female group (p<0.05) (table 4). FEV₁/FVC decreased with the age of the cohort in both sexes (0.12–0.14%·yr⁻¹, p-value for trend <0.05) (fig. 2).

Comparison with other prediction equations. When the prediction equations from the present study (table 4) were compared with other prediction equations [7, 9, 10, 12, 15, 17, 18], the authors found that the closest agreement for FEV₁, FVC, PEF and FEF_{25%–75%} in females was with HANKINSON *et al.* [17]. In males, similar agreements were found for FVC and PEF, but for FEV₁, the closest agreement was with the prediction equation of ROCA *et al.* [18] (table 5).

The difference by mean predicted value between the present study and the ECCS was fairly constant for FEV₁ in both sexes (fig. 3) and FVC in females (fig. 4). For FVC in males, the relation increased proportionally when the present prediction values

Table 3. – Prediction equations from the Bronchial Obstruction in Nord-Trøndelag (BONT) study for particular parameters with explained variance (adjusted R²) and residual standard deviation (RSD) based on 362 males and 546 females

Parameter	Males			Females		
	Equation	R ²	RSD	Equation	R ²	RSD
FVC	Exp (-12.396+2.733 ln(H)-0.0000592 A ²)	0.63	0.12	Exp (-9.851+2.189 ln(H)-0.000143A ² +0.006439A)	0.68	0.13
FEV ₁	Exp (-10.556+2.342 ln(H)-0.0000685 A ²)	0.60	0.12	Exp (-9.091+2.004 ln(H)-0.000163 A ² +0.007237A)	0.72	0.13
FEV ₁ /FVC	Exp (6.433-0.385 ln(H)-0.000923A)	0.05	0.07	Exp (5.403-0.185 ln(H)-0.00115A)	0.06	0.07
PEF L·s ⁻¹	Exp (-6.632+1.731 ln(H)-0.000436A ²)	0.16	0.23	Exp (-7.726+1.808 ln(H)-0.000286A ² +0.022A)	0.34	0.25
FEF _{25%-75%} L·s ⁻¹	Exp (-3.764+1.037 ln(H)-0.000102A ²)	0.26	0.27	Exp (-6.442+1.474 ln(H)-0.000243A ² +0.01199A)	0.41	0.30
Log AUC L×L·s ⁻¹	Exp (-156.16+37.12 ln(H)-0.184H-0.00012A ²)	0.51	0.27	Exp (-16.597+3.698 ln(H)-0.00041A ² +0.02408A)	0.65	0.29

A: age in yrs; H: height in cm; Exp (x): e^x; FVC: forced vital capacity; FEV₁: forced expiratory volume in one second; PEF: peak expiratory flow; FEF_{25%-75%}: forced mid-expiratory flow; AUC: area under curve. The predicted value for FEV₁ in a 20-yr-old male with height 180 cm is computed as: FEV₁ = e^{(-10.556+2.342×ln(180)-0.0000685×400)} = e^{1.5785} = 4.848. The lower limit of normal (LLN) is computed as: LLN FEV₁ = e^(predicted-1.645×RSD) = e^{1.3811} = 3.979.

were compared with those from ECCS [7], HANKINSON *et al.* [17] and BRÄNDLI *et al.* [10] (fig. 4). Unlike the regression coefficient for age, the coefficient for height in the present study was significantly higher than that reported in other studies that used linear regression models without polynomial terms (~0.080 *versus* 0.056–0.057) [7, 12, 15, 18] (table 4). This is, however, in agreement with previous studies from Norway and Sweden [2, 5] (figs. 3 and 4).

The Bland Altman plots confirm the underestimation of both FEV₁ and FVC by prediction equations from the ECCS *versus* the present study (figs. 3 and 4). However, closer agreement is confirmed between the present study and other studies included in the comparisons (table 5 and figs. 3 and 4).

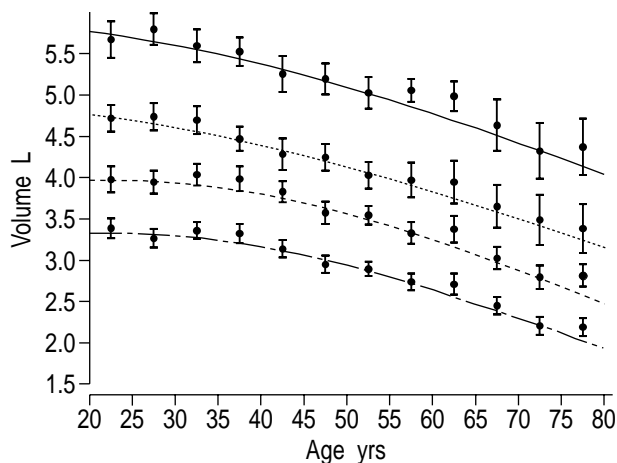


Fig. 1. – Mean observed forced expiratory volume in one second (FEV₁) and forced vital capacity (FVC) in 5-yr intervals with 95% confidence intervals (●) and FEV₁ and FVC predicted by the Bronchial Obstruction in Nord-Trøndelag (BONT) study in males and females. BONT predicted is indicated by the following lines: —: FVC males; ·····: FEV₁ males; - - - -: FVC females; - · - · -: FEV₁ females.

Discussion

Based on a random sample that only included asymptomatic never-smokers, the authors have estimated prediction equations for lung function variables. The present study confirms that the ECCS prediction equations, which are the most commonly used in Norway, significantly underestimate FEV₁ and FVC. According to the Global Initiative for Chronic Obstructive Lung Disease, the British Thoracic Society, and the European Respiratory Society guidelines, FEV₁ level in per cent of predicted gives the severity of airflow limitation. The choice of reference values may, therefore, be of clinical importance.

As a cross-sectional population study, the data from the present study are subject to cohort bias due to a variety of host and environmental factors [8]. Compared to longitudinal studies, cross-sectional studies are cheaper and more practical for developing prediction equations, but need to be repeated regularly in different regions. No reference values are available from northern Europe in the 1990s. The strengths of this study are the random selection of the reference group from a total adult population, surveillance of the technicians and equipment by the same person, and direct feedback to the technicians about the acceptability and reproducibility of the flow/volume curves.

Participation

Of the 5% random sample, 85% participated in the BONT study. A nonresponder study did not reveal differences in respiratory symptoms or diseases between the responder and the nonresponder groups [19]. There were no indications of selection bias caused by the number of nonresponders, except in the elderly, where the healthiest and most mobile subjects might have been over-represented.

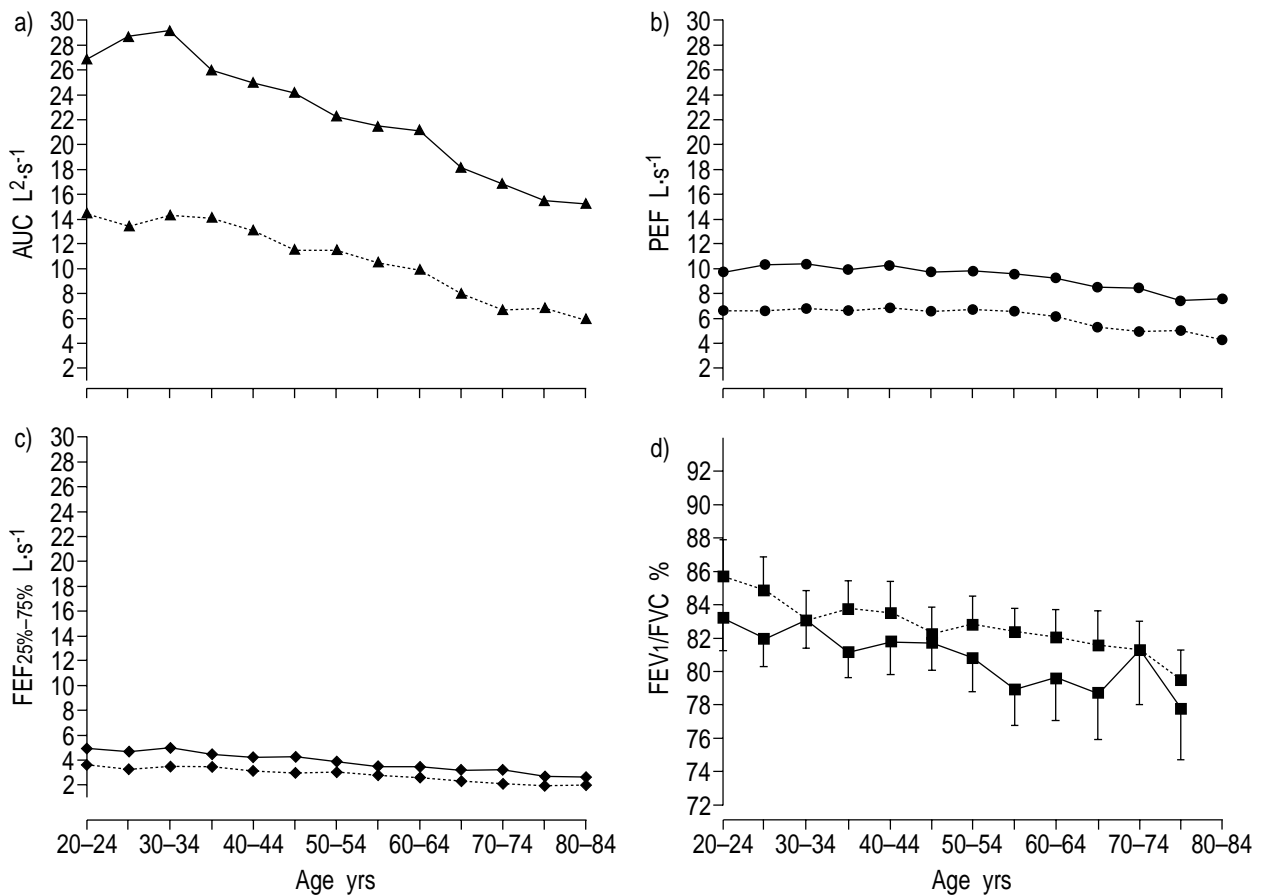


Fig. 2.—Mean observed a) area under curve (AUC), b) peak expiratory flow (PEF), c) forced mid-expiratory flow (FEF_{25%-75%}), and d) forced expiratory volume in one second (FEV₁)/forced vital capacity (FVC) % in 5-yr intervals in males (—) and females (----) by age. 95% confidence intervals are shown in d).

Technical factors

Failure to meet the acceptability criteria for spirometry has been reported in many studies [27–30]. Using the 1987 ATS recommendation for FEV₁ and FVC [7], the authors observed similar percentages of test failure as HUMERFELT *et al.* [29]. Many had problems with the end of plateau criterion based on the 1987 ATS recommendations [31]. The curves were, therefore, visually controlled, and those with a plateau beginning at the volume/time curve were included in the present analyses. Lack of end of plateau could

cause an underestimation of FVC and overestimation of FEV₁/FVC [23]. Subjects >80 yrs of age were excluded because of a low participation rate, few asymptomatic never-smokers, and problems with the reproducibility and acceptability criteria.

Automatically retaining the curve with the largest sum of FEV₁ or FVC might have retained some curves with submaximal effort. KROWKA *et al.* [32] found that FEV₁ was inversely dependent on effort, but in accordance with the ATS, the present authors did not exclude curves with submaximal effort [23]. Saving such curves and the lack of quality control

Table 4.—Regression coefficients for age and height in females and males in age-stratified multiple linear regression analysis with forced expiratory volume in one second (FEV₁) and forced vital capacity (FVC) as dependent variables

Variable	Age 20–39 yrs		Age 40–59 yrs		Age 60–80 yrs	
	FVC	FEV ₁	FVC	FEV ₁	FVC	FEV ₁
Females						
Age	-0.0025 (0.007)	-0.002 (0.006)	-0.034* (0.005)	-0.027* (0.004)	-0.042* (0.007)	-0.040* (0.005)
Height	0.053* (0.007)	0.042* (0.006)	0.043* (0.005)	0.033* (0.004)	0.041* (0.006)	0.028* (0.004)
Males						
Age	-0.015* (0.009)	-0.019* (0.008)	-0.020* (0.010)	-0.023* (0.008)	-0.039* (0.012)	-0.032* (0.010)
Height	0.079* (0.008)	0.051* (0.007)	0.074* (0.008)	0.053* (0.007)	0.093* (0.013)	0.067* (0.011)

Data are presented as regression coefficient (standard error). *: p<0.05.

Table 5.—The per cent mean differences and mean square of differences between observed values in this study and predicted values according to different prediction equations

Variable	Age yrs	Females				Males			
		n	Mean difference %	Mean squared difference	Rank	n	Mean difference %	Mean squared difference	Rank
FVC									
Present	20–80	546	0.9	0.198	1	362	0.4	0.369	1
BRÄNDLI [10]	20–60	346	-0.9	0.212	3	275	-1.0	0.418	5
CRAPO [15]	15–84	546	4.2	0.232	6	362	2.6	0.419	6
GORE [9]	18–78	524	4.5	0.224	5	340	1.4	0.377	3
HANKINSON [17]	20–80	546	0.7	0.207	2	362	0.9	0.374	2
QUANJER [7]	18–70	458	12.9	0.441	7	338	9.1	0.629	7
ROCA [18]	20–70	458	0.0	0.215	4	338	-1.9	0.409	4
ENRIGHT [12]	65–85	144	-0.8	0.191	#	42	4.2	0.335	#
FEV₁									
Present	20–80	546	0.6	0.129	1	362	0.4	0.198	1
BRÄNDLI [10]	20–60	346	2.4	0.140	3	275	2.5	0.314	6
CRAPO [15]	15–84	546	4.8	0.153	5	362	3.4	0.304	4
GORE [9]	18–78	524	4.1	0.150	4	340	2.8	0.292	3
HANKINSON [17]	20–80	546	2.9	0.136	2	362	3.8	0.305	5
QUANJER [7]	18–70	458	9.2	0.221	7	338	8.5	0.426	7
ROCA [18]	20–70	458	3.6	0.155	6	338	0.3	0.288	2
ENRIGHT [12]	65–85	144	5.3	0.116	#	42	13.2	0.361	#
FEV₁/FVC									
Present	20–80	546	0.0	32.592	1	362	0.0	28.893	1
BRÄNDLI [10]	20–60	346	3.2	41.887	6	275	3.4	40.713	5
CRAPO [15]	15–84	546	1.4	40.168	4	362	0.9	31.007	2
GORE [9]	18–78	524	1.3	38.255	3	340	0.8	32.286	3
HANKINSON [17]	20–80	546	2.3	41.665	5	362	2.8	40.913	6
QUANJER [7]	18–70	458	2.7	38.231	2	338	2.0	35.341	4
ROCA [18]	20–70	458	7.2	72.593	7	338	4.5	46.722	7
ENRIGHT [12]	65–85	144	6.4	64.187	#	42	8.1	68.598	#
PEF									
Present	20–80	546	0.0	1.940	1	362	0.2	3.984	1
BRÄNDLI [10]	20–60	346	6.8	2.198	5	275	4.7	4.291	4
GORE [9]	18–78	524	-5.5	2.223	6	340	-7.6	4.584	6
HANKINSON [17]	20–80	546	-4.1	2.021	2	362	-0.9	4.022	2
QUANJER [7]	18–70	458	-1.0	2.092	3	338	5.8	4.429	5
ROCA [18]	20–70	458	3.4	2.164	4	338	-3.7	4.230	3
FEF_{25%–75%}									
Present	20–80	546	0.0	0.602	1	362	0.3	1.228	1
BRÄNDLI [10]	20–60	346	5.8	0.785	7	275	9.8	1.486	7
CRAPO [15]	15–84	546	0.1	0.667	4	362	2.4	1.239	2
GORE [9]	18–78	524	1.4	0.660	3	340	3.9	1.332	4
HANKINSON [17]	20–80	546	5.8	0.649	2	362	9.3	1.464	6
QUANJER [7]	18–70	458	-10.8	0.757	5	338	-1.6	1.301	3
ROCA [18]	20–70	458	9.0	0.782	6	338	5.4	1.383	5

Ranks of the mean square are shown and comparisons are restricted to age groups from which the different equations are estimated. FVC: forced vital capacity; FEV₁: forced expiratory volume in one second; PEF: peak expiratory flow; FEF_{25%–75%}: forced mid-expiratory flow. #: not included in the ranking because of inclusion of 65–80 yrs age group only.

criteria for PEF in the software might have caused underestimation of PEF. Only minor differences between the present study and the ECCS of this parameter compared to FEV₁ and FVC could indicate such underestimation. A possible criterion for effort based on the PEF/FEF_{50%} ratio could solve this problem in future studies.

Lung function by age

The associations between FEV₁, FVC and age found in this population are similar to results from previous cross-sectional studies [7, 14, 33–36]. The authors found that FEV₁/FVC uniformly reduced

with age, but the levels were higher and declined less through age groups than reported in other studies [13, 33, 34]. Within the oldest group, "super-healthy" elderly survivors could lessen the slope of the regression curve, and spuriously increase the predicted values for the middle-aged [26]. In the present study, the fitness of the prediction equations in the middle-aged was hardly affected by this.

Comparison with other prediction equations

The estimates from the prediction equations for FEV₁ and FVC were in closer agreement with the results from other studies [9–11, 15, 17, 18] than those

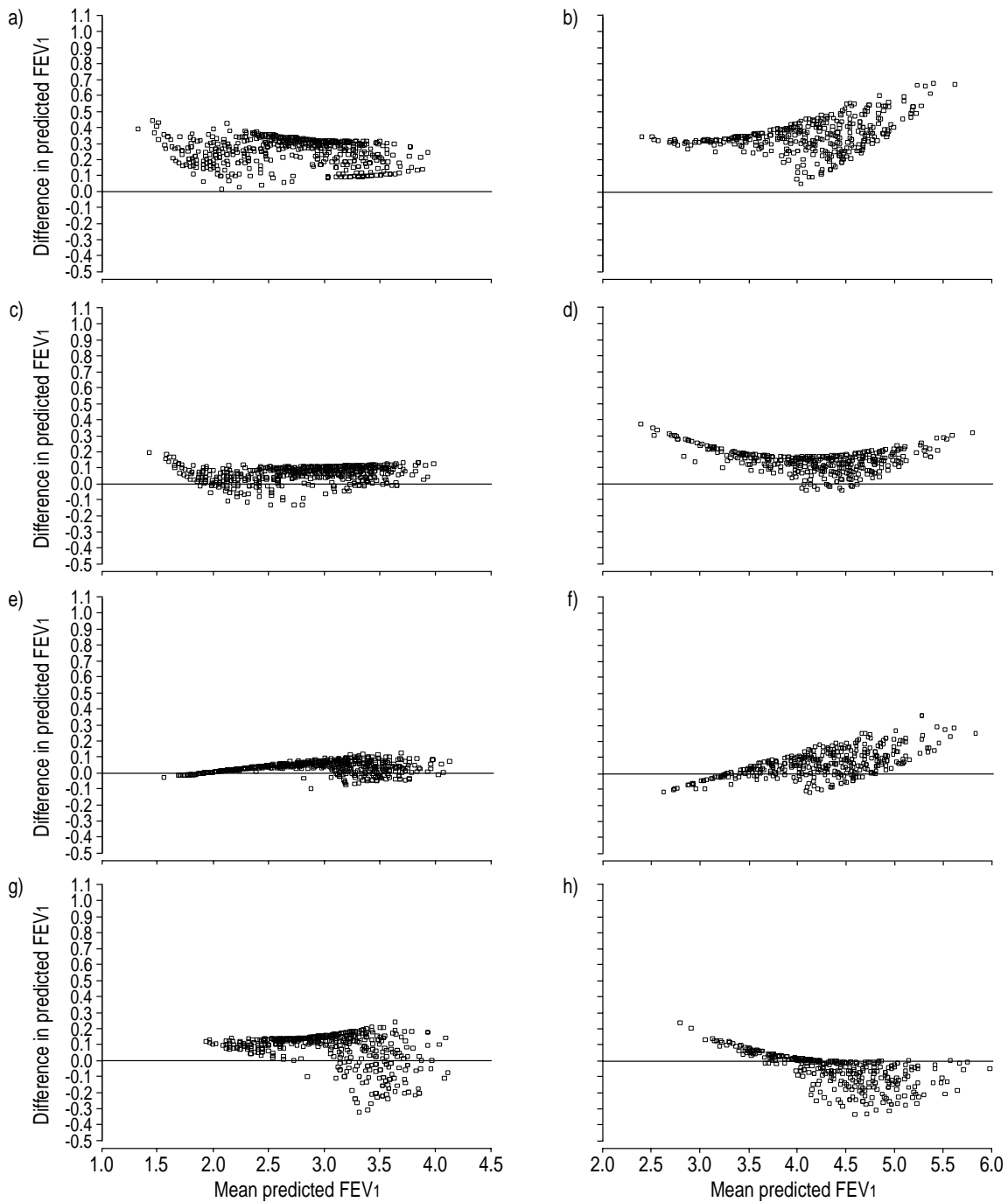


Fig. 3. – Bland Altman plots showing the difference between forced expiratory volume in one second (FEV₁) against mean FEV₁ predicted by a) and b) Bronchial Obstruction in Nord-Trøndelag (BONT) versus European Community for Coal and Steel [7], c) and d) BONT versus HANKINSON *et al.* [17] e) and f) BONT versus BRÄNDLI *et al.* [10], and g) and h) BONT versus GULSVIK [2] in females (a, c, e, g) and males (b, d, f, h).

from the ECCS [7]. Even if asymptomatic smokers were included in the previous set of equations from Norway [3], the present study is in greater agreement with this study than that of the ECCS.

ROCA *et al.* [1] estimated prediction deviations (observed values minus values estimated by ECCS equations) for FEV₁ and FVC from the ECRHS. Using the same inclusion criteria, the prediction deviations of FEV₁ were nearly identical in the

ECRHS and the present study, whilst an ~10% higher deviation of FVC in both sexes was found in the present study compared to ECRHS (data not shown).

The ECCS prediction equations were summary equations compiled from a review of previously published equations, including different populations and using different spirometers and techniques. Comparisons with other studies do not indicate that

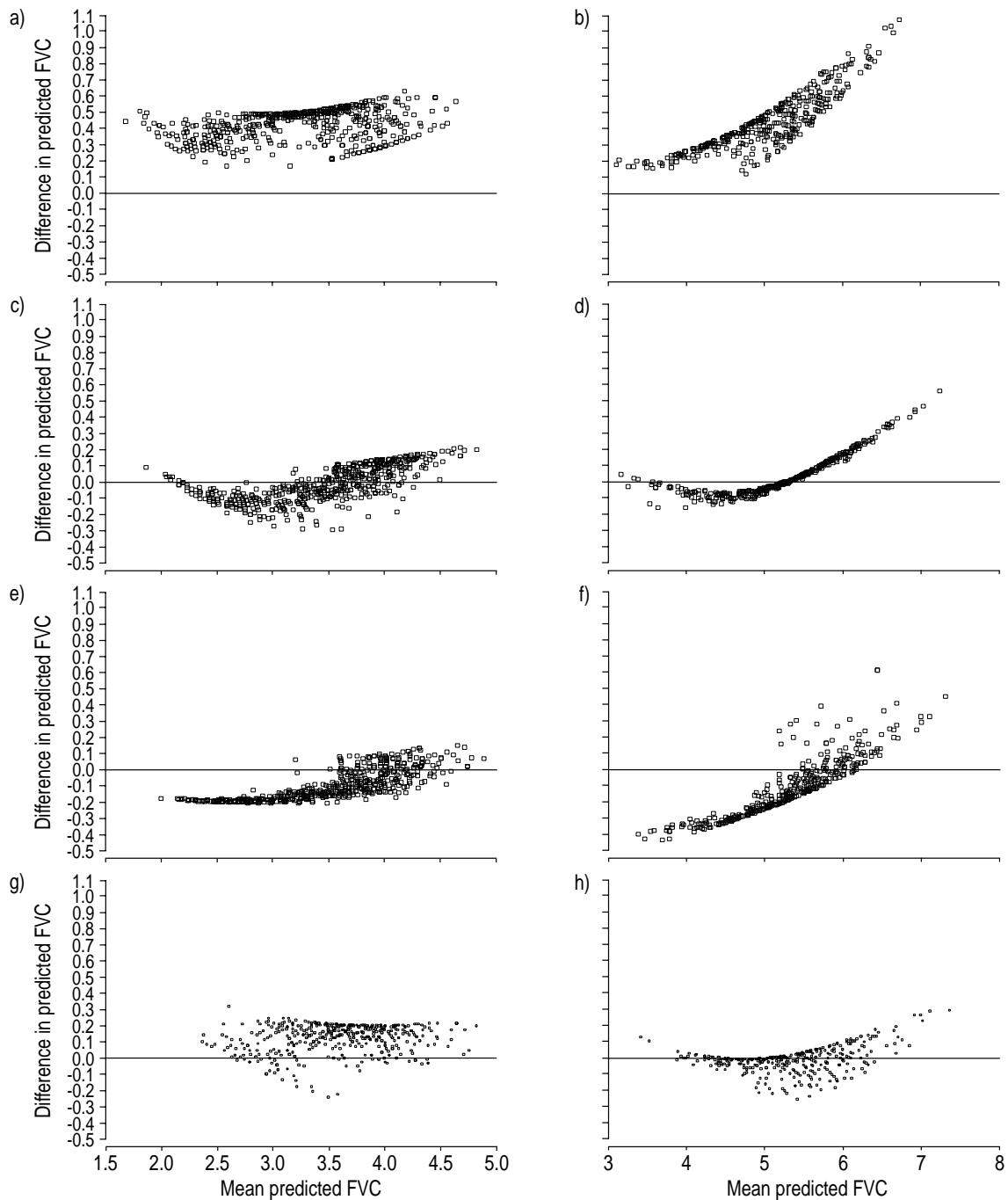


Fig. 4. – Bland Altman plots showing the difference between forced vital capacity (FVC) against mean FVC predicted by a) and b) Bronchial Obstruction in Nord-Trøndelag (BONT) versus European Community for Coal and Steel [7], c) and d) BONT versus HANKINSON *et al.* [17] e) and f), BONT versus BRÄNDLI *et al.* [10], and g) and h) BONT versus GULSVIK [3] in females (a, c, e, g) and males (b, d, f, h).

the type of spirometer [9, 15, 17, 36] explains the difference compared to the prediction equations from the ECCS. The differences between the prediction equations from the ECCS and later studies may be the result of a significant increase in lung function parameters, as is seen in other anthropometric measures, such as height [37, 38], change of technique and different exclusion criteria for the reference sample,

or use of qualitative controls, such as immediate feedback on acceptability and reproducibility of spirometric measurement [10]. Increased awareness and better reporting of respiratory symptoms in the population could also result in the selection of healthier subjects in more recent reference samples. If the authors included subjects that had respiratory symptoms but had not been diagnosed as having a

respiratory disease, this had little effect on the predicted values (data not shown). This, therefore, does not explain the differences compared to ECCS.

Higher levels of FEV₁/FVC were found than has been predicted by other studies. The prediction equations of ROCA *et al.* [18] and ENRIGHT *et al.* [16] showed a different pattern with a higher decrease by age than the present study. Including light exsmokers in the present analyses, as seen in the study of ENRIGHT *et al.* [16], resulted in a 0.4% reduction of FEV₁/FVC, which does not explain the differences found. The differences could have been caused by a bias toward healthier subjects in the elderly group compared to other studies, or by a higher succession rate in getting optimal expiration from the elderly in the study of ENRIGHT *et al.* [16]. Comparably low explained variance of regression models for this parameter have also been reported in other studies and are also dependent upon the number of subjects included [6, 10, 12].

Conclusion

The authors have developed prediction equations for lung function parameters from a random sample of never-smokers without reported symptoms or diseases. The present study confirms the results from recent studies from Europe, the USA and Australia, all of which indicate a higher level of predicted lung function parameters than those predicted by the equations from the European Community for Coal and Steel. The results have substantial clinical implications on the diagnosis and management of patients with symptoms of obstructive lung disease. Healthcare providers should be encouraged to reconsider their choice of prediction equations of spirometry; the authors recommend the use of the Norwegian prediction equations.

Acknowledgements. The Nord-Trøndelag Health Study (HUNT) is a collaboration between the HUNT Research Centre, Faculty of Medicine, Norwegian University of Science and Technology (NTNU), Verdal, The National Institute of Public Health, The National Health Screening Service of Norway, and Nord-Trøndelag County Council.

References

1. Roca J, Burgos F, Sunyer J, *et al.* Reference values for forced spirometry. Group of the European Community Respiratory Health Survey. *Eur Respir J* 1998; 11: 1354–1362.
2. Gulsvik A. Prevalence and manifestations of obstructive lung disease in the city of Oslo. *Scand J Respir Dis* 1979; 60: 286–296.
3. Gulsvik A. Obstructive lung disease in an urban population. Department of Lung Diseases, The National Hospital, University of Oslo, Thesis, 1974.
4. Hedenström H, Malmberg P, Agarwal K. Reference values for lung function tests in females. Regression equations with smoking variables. *Bull Eur Physiopathol Respir* 1985; 21: 551–557.
5. Hedenström H, Malmberg P, Fridriksson HV. Reference values for lung function tests in men: Regression equations with smoking variables. *Upsala J Med Sci* 1986; 91: 299–310.
6. Oxhøj H, Jeppesen GM, Larsen VH, Jorgensen B. Spirometry in healthy adult never-smokers. *Clin Physiol* 1988; 8: 329–339.
7. Quanjer PH, Tammeling GJ, Cotes JE, Pedersen OF, Peslin R, Yernault JC. Lung volumes and forced ventilatory flows. Report Working Party Standardization of Lung Function Tests, European Community for Steel and Coal. Official Statement of the European Respiratory Society. *Eur Respir J* 1993; 6: Suppl. 16, 5s–40s.
8. American Thoracic Society. Lung function testing: selection of reference values and interpretative strategies. American Thoracic Society. *Am Rev Respir Dis* 1991; 144: 1202–1218.
9. Gore CJ, Crockett AJ, Pederson DG, Booth ML, Bauman A, Owen N. Spirometric standards for healthy adult lifetime nonsmokers in Australia. *Eur Respir J* 1995; 8: 773–782.
10. Brändli O, Schindler C, Kunzli N, Keller R, Perruchoud AP. Lung function in healthy never smoking adults: reference values and lower limits of normal of a Swiss population. *Thorax* 1996; 51: 277–283.
11. Baur X, Istringhausen-Bley S, Degens P. Comparison of lung-function reference values. *Int Arch Occup Environ Health* 1999; 72: 69–83.
12. Enright PL, Kronmal RA, Higgins M, Schenker M, Haponik EF. Spirometry reference values for women and men 65 to 85 years of age. Cardiovascular health study. *Am Rev Respir Dis* 1993; 147: 125–133.
13. McDonnell WF, Enright PL, Abbey DE, *et al.* Spirometric reference equations for older adults. *Respir Med* 1998; 92: 914–921.
14. Janssens JP, Pache JC, Nicod LP. Physiological changes in respiratory function associated with ageing. *Eur Respir J* 1999; 13: 197–205.
15. Crapo RO, Morris AH, Gardner RM. Reference spirometric values using techniques and equipment that meet ATS recommendations. *Am Rev Respir Dis* 1981; 123: 659–664.
16. Enright PL, Adams AB, Boyle PJ, Sherrill DL. Spirometry and maximal respiratory pressure references from healthy Minnesota 65- to 85-year-old women and men. *Chest* 1995; 108: 663–669 (published erratum appears in *Chest* 1995; 108: 1776).
17. Hankinson JL, Odencrantz JR, Fedan KB. Spirometric reference values from a sample of the general U.S. population. *Am J Respir Crit Care Med* 1999; 159: 179–187.
18. Roca J, Sanchis J, Agusti-Vidal A, *et al.* Spirometric reference values from a Mediterranean population. *Bull Eur Physiopathol Respir* 1986; 22: 217–224.
19. Langhammer A, Johnsen R, Holmen J, Gulsvik A, Bjermer L. Cigarette smoking gives more respiratory symptoms among women than among men. *J Epidemiol Community Health* 2000; 54: 917–922.
20. Holmen J, Midthjell K, Bjartveit K, *et al.* The Nord-Trøndelag Health Survey 1984–86. Purpose, background and methods. Participation, non-participation and frequency distributions. Oslo, National Institute of Public Health 1990, report no. 4; p. 176.

21. Lukerstuen Å. Statistical Yearbook of Norway. Oslo/Kongvinger, Statistics Norway, 2000.
22. Øydvinn K, ed. Drug Consumption in Norway 1993–1997. Oslo, Norwegian Medicinal Depot, 1999; p. 190.
23. American Thoracic Society. Standardization of Spirometry, 1994 Update. American Thoracic Society. *Am J Respir Crit Care Med* 1995; 152: 1107–1136.
24. American Thoracic Society. Standardization of spirometry: a summary of recommendations from the American Thoracic Society. The 1987 update. *Ann Intern Med* 1988; 108: 217–220.
25. Cole TJ. Linear and proportional regression models in the prediction of ventilatory function. *J Royal Stat Soc* 1975; 138: 297–338.
26. Glindmeyer HW, Lefante JJ, McColloster C, Jones RN, Weill H. Blue-collar normative spirometric values for Caucasian and African-American men and women aged 18 to 65. *Am J Respir Crit Care Med* 1995; 151: 412–422.
27. Enright PL, Johnson LR, Connett JE, Voelker H, Buist AS. Spirometry in the lung health study. I. Methods and quality control. *Am Rev Respir Dis* 1991; 143: 1215–1223.
28. Ng'Ang'a LW, Ernst P, Jaakkola MS, Gerardi G, Hanley JH, Becklake MR. Spirometric lung function. Distribution and determinants of test failure in a young adult population. *Am Rev Respir Dis* 1992; 145: 48–52.
29. Humerfelt S, Eide GE, Kvale G, Gulsvik A. Predictors of spirometric test failure: a comparison of the 1983 and 1993 acceptability criteria from the European Community for Coal and Steel. *Occup Environ Med* 1995; 52: 547–553.
30. Swanney MP, Jensen RL, Crichton DA, Beckert LE, Cardno LA, Crapo RO. FEV(6) is an acceptable surrogate for FVC in the spirometric diagnosis of airway obstruction and restriction. *Am J Respir Crit Care Med* 2000; 162: 917–919.
31. Stoller JK, Basheda S, Laskowski D, Goormastic M, McCarthy K. Trial of standard versus modified expiration to achieve end-of-test spirometry criteria. *Am Rev Respir Dis* 1993; 148: 275–280.
32. Krowka MJ, Enright PL, Rodarte JR, Hyatt RE. Effect of effort on measurement of forced expiratory volume in one second. *Am Rev Respir Dis* 1987; 136: 829–833.
33. Milne JS, Williamson J. Respiratory function tests in older people. *Clin Sci* 1972; 42: 371–381.
34. Schmidt CD, Dickman ML, Gardner RM, Brough FK. Spirometric standards for healthy elderly men and women. 532 subjects, ages 55 through 94 years. *Am Rev Respir Dis* 1973; 108: 933–939.
35. Hankinson JL, Bang KM. Acceptability and reproducibility criteria of the American Thoracic Society as observed in a sample of the general population. *Am Rev Respir Dis* 1991; 143: 516–521.
36. Knudson RJ, Slatin RC, Lebowitz MD, Burrows B. The maximal expiratory flow-volume curve. Normal standards, variability, and effects of age. *Am Rev Respir Dis* 1976; 113: 587–600.
37. Glindmeyer HW, Diem JE, Jones RN, Weill H. Non-comparability of longitudinally and cross-sectionally determined annual change in spirometry. *Am Rev Respir Dis* 1982; 125: 544–566.
38. Xu X, Laird N, Dockery DW, Schouten JP, Rijcken B, Weiss ST. Age, period, and cohort effects on pulmonary function in a 24-year longitudinal study. *Am J Epidemiol* 1995; 141: 554–566.